

SALE NUMBER 1340

ON PUBLIC EXHIBITION FROM THURSDAY, MARCH 7<sup>TH</sup>

THE  
WONG-YUA-SHI  
COLLECTION OF  
CHINESE PORCELAINS, BRONZES  
JADES AND PAINTINGS

THE ANDERSON GALLERIES  
PARK AVENUE AND FIFTY-NINTH STREET  
NEW YORK

1918.



SMITHSONIAN  
INSTITUTION

3141.

SALE NUMBER 1340

ON PUBLIC EXHIBITION FROM THURSDAY, MARCH 7<sup>TH</sup>

THE  
WONG-YUA-SHI  
COLLECTION OF  
CHINESE PORCELAINS BRONZES  
JADES AND PAINTINGS

TO BE SOLD

WEDNESDAY, THURSDAY, FRIDAY AND SATURDAY  
AFTERNOONS MARCH THIRTEENTH, FOURTEENTH  
FIFTEENTH AND SIXTEENTH, AT TWO-THIRTY O'CLOCK

THE ANDERSON GALLERIES  
PARK AVENUE AND FIFTY-NINTH STREET  
NEW YORK

## CONDITIONS OF SALE

1. All bids to be PER LOT as numbered in the Catalogue.
- 2 The highest bidder to be the buyer; in all cases of disputed bids the lot shall be resold, but the Auctioneer will use his judgment as to the good faith of all claims and his decision shall be final. He also reserves the right to reject any fractional or nominal bid which in his judgment may delay or injuriously affect the sale.
3. Buyers to give their names and addresses and to make such cash payments on account as may be required, in default of which the lots purchased to be resold immediately.
4. The lots to be taken away at the buyer's expense and risk within twenty-four hours from the conclusion of the sale, and the remainder of the purchase money to be absolutely paid on or before delivery, in default of which The Anderson Galleries, Incorporated, will not be responsible if the lot or lots be lost, stolen, damaged, or destroyed, but they will be left at the sole risk of the purchaser, and subject to storage charges.
5. To prevent inaccuracy in delivery, and inconvenience in the settlement of purchases, no lot will be delivered during the sale.
6. All lots will be exposed for public exhibition in The Anderson Galleries before the date of sale, for examination by intending purchasers, and The Anderson Galleries, Incorporated, will not be responsible for the correctness of the description, authenticity, genuineness, or for any defect or fault in or concerning any lot, and makes no warranty whatever, but will sell each lot exactly as it is, WITHOUT RECOURSE. But upon receiving before the date of sale, expert opinion in writing that any lot is not as represented, The Anderson Galleries, Incorporated, will use every effort to furnish proof to the contrary, and in default of such proof the lot will be sold subject to the declaration of the aforesaid expert, he being liable to the owner or owners thereof for damage or injury occasioned by such declaration.
7. TERMS CASH. Upon failure to comply with the above conditions any sum deposited as part payment shall be forfeited, and all such lots as remain uncleared after twenty-four hours from the conclusion of the sale, will be resold by either private or public sale at such time as The Anderson Galleries, Incorporated, shall determine, without further notice, and if any deficiency arises from such resale it shall be made good by the defaulter at this sale together with all the expenses incurred thereby. This condition shall be without prejudice to the right of The Anderson Galleries, Incorporated, to enforce the contract with the buyer, without such resale.
8. BIDS. We make no charge for executing orders for our customers and use all bids competitively, buying at the lowest price permitted by other bids.
9. The Anderson Galleries, Incorporated, will afford every facility for the employment of carriers and packers by the purchasers, but will not be responsible for any damage arising from the acts of such carriers and packers.

*Priced Copy of this Catalogue may be secured for Fifty Cents for each Session of the Sale.*

## THE ANDERSON GALLERIES

INCORPORATED

PARK AVENUE AND FIFTY-NINTH STREET

NEW YORK

TELEPHONE, PLAZA 9356

SALES CONDUCTED BY MR. FREDERICK A. CHAPMAN

17.37 ✓  
A54  
10,1340

## NOTE

**T**HIS most striking collection of Chinese Porcelains, Bronzes, Enamels, Lacquers, Jades, Rock Crystals and Paintings was brought to New York by Mr. Kain-Tong-Wong of Shanghai, to be sold for the account of his father, Mr. Wong-Yua-Shi, the eminent Chinese artist and antiquaire, formerly of Yuen-Chou, Kiang-si Province, and now of Shanghai.

Among the Porcelains are several unusual specimens, notably the Blue and White Porcelain Temple Jars (Numbers 123 and 126), both of the best K'ang Hsi Period.

In Jades, Rock Crystals and Agates of the Ch'ien Lung Period—more than one hundred and forty objects—the collection ranges from the seductive little Jade Girdle-Pendants to the supremely beautiful and decorative Rose Crystal Vase (Number 476), which is  $13\frac{1}{2}$  inches high, cut from a solid crystal of fine, translucent quality. The Indoor Gardens in Jade are a special delight to the eye, and a brilliant Landscape Panel (Number 387), executed in carved ivory and kingfisher plumes, is one of the most attractive items in the Collection.

A remarkable early Cinnabar Lacquer (Number 392), a large Fu-lion of the Ming Dynasty, is notable for its rare decorative quality. Many lacquer Cabinet Doors of the same period will be eagerly sought on account of the present vogue for lacquer furniture.

The early Bronzes include Arms and Implements of the Chou Dynasty, and a group of Bronze Mirrors of the Ch'in and T'ang Dynasties have motives of great versatility and charm.

The Jades of Han, T'ang, Sung and Ming Dynasties are especially notable and include many important and unique specimens: several beautiful Seals used by Chinese Emperors to sign momentous documents; Ritualistic and Astronomical Instruments; a Ceremonial Jade Ju-i of the Han Dynasty (Number 530), perfection itself in composition; an Elephant carved in Jade (Number 525), remarkable for the strength of its modelling, and a Bell (Number 526), interesting as to color and detail.

Many paintings, some of subtle color and sensitive drawing, and others bolder, of distinctively decorative character, are especially important, for Mr. Wong, who practiced painting as his profession until about twenty years ago, has indulged a natural predilection for this *métier* in gathering from remote Temples and Palaces the rarer sort of ancient paintings.

FRANK H. G. KEEBLE.

## DYNASTIES OF THE CHINESE EMPIRE

SHANG DYNASTY	1767-1122 B. C.
CHOU DYNASTY	1122-256 B. C.
SHIN DYNASTY	256-206 B. C.
HAN DYNASTY	206 B. C.-220 A. D.
WEI DYNASTY	220-265 A. D.
THE SIX DYNASTIES	265-618 A. D.
T'ANG DYNASTY	618-906 A. D.
THE FIVE DYNASTIES	906-960 A. D.
SUNG DYNASTY	960-1280 A. D.
YUAN DYNASTY	1280-1368 A. D.
MING DYNASTY	1368-1644 A. D.
YUNG LO	1403-1424 A. D.
HSÜAN TE	1426-1435 A. D.
CH'ÊNG HUA	1465-1487 A. D.
CH'ÊNG TÊ	1506-1521 A. D.
CHIA CHING	1522-1566 A. D.
LUNG CH'ING	1567-1572 A. D.
WAN LI	1573-1619 A. D.
T'AI CH'ANG	1620-1621 A. D.
T'IEN CH'I	1621-1628 A. D.
CH'UNG CHÊN	1628-1644 A. D.
CH'ING DYNASTY	1644-1912 A. D.
SHUN CHIH	1644-1661 A. D.
K'ANG HSI	1662-1722 A. D.
YUNG CHÊNG	1723-1735 A. D.
CH'IENT LUNG	1736-1795 A. D.
KEA KING	1796-1820 A. D.
TAO KUANG	1821-1850 A. D.
HSIEN FÊNG	1851-1861 A. D.
T'UNG CHIH	1862-1874 A. D.
KUANG HSÜ	1875- A. D.

## ORDER OF SALE

POTTERY AND PORCELAINS OF THE SUNG, MING, AND CH'ING DYNASTIES	1-181
SNUFF BOTTLES IN AMBER, JADE, PORCE- LAIN, AGATE AND ROCK CRYSTAL	182-192
VELVET AND BROCADE PANELS AND TEMPLE HANGINGS	193-220
CANTON AND CLOISONNE ENAMELS	221-245
BRONZE MIRRORS OF THE CH'IN AND T'ANG DYNASTIES	246-266
BRONZE VESSELS, SWORDS AND IMPLEMENTS OF THE CHOU, HAN, WEI, SUNG AND MING DYNASTIES	267-288
CARVINGS IN JADE, AGATE, IVORY, AMBER, LAPIS LAZULI AND ROCK CRYSTAL OF THE CH'IEN LUNG PERIOD	289-367
BOWLS AND VASES IN COLORED GLASS OF THE CH'IEN LUNG PERIOD	368-374
CINNABAR LACQUERS, DECORATIVE CARVED PANELS AND CABINET DOORS OF THE MING AND CH'ING DYNASTIES	375-392
CARVINGS IN JADE AND IVORY OF THE MING DYNASTY	393-403
PAINTINGS, NEEDLEWORK AND K'O SSU PANELS OF THE MING DYNASTY	404-429
CARVINGS IN JADE, AGATE, LAPIS LAZULI AND ROCK CRYSTAL OF THE CH'IEN LUNG PERIOD (Continued)	430-479
POTTERY AND CARVED STONE OF THE HAN, T'ANG AND SUNG DYNASTIES	480-486
RARE CARVED JADES OF THE HAN, T'ANG AND SUNG DYNASTIES	487-530
PAINTINGS OF THE T'ANG, SUNG AND YUAN DYNASTIES	531-573



THE WONG-YUA-SHI COLLECTION  
OF  
CHINESE PORCELAINS, BRONZES  
JADES and PAINTINGS

---

FIRST SESSION

Wednesday Afternoon, March 13, 1918, at 2:30 o'clock

Lots 1—244

1 TWO MINIATURE VASES

Ch'ien Lung Period.

Ovoid; one invested with a resonant white glaze, the other with a heavy brown-black reflecting glaze. Have carved wood stands. *Respective heights, 2½ inches and 3¼ inches.*

2 INTERESTING RAINBOW VASE

Ch'ien Lung Period.

Club-shape, with incurvate neck and spreading lip. Enriched with various glazes in irregular patches of strong blue, turquoise-blue, yellow and crimson. Has carved wood stand. *Height, 9½ inches.*

3 TWO TURQUOISE-BLUE VASES

Ch'ien Lung Period.

One elongated inverted pear-shape with small neck; the other, pear-shape with wide neck, short foot and two rudimentary elephant handles. Both invested with a truité turquoise glaze. Have carved wood stands. *Respective heights, 6¼ inches and 4½ inches.*

4 GOURD-SHAPED CELADON VASE

Ch'ien Lung Period.

Double gourd-shape. The shoulder of the lower lobe is enriched with a gourd-vine holding fruit modeled in relief. Invested with an even glaze of pearly-gray. Has carved wood stand. *Height, 8½ inches.*

5 CUCUMBER-GREEN BOTTLE VASE

Ch'ien Lung Period.

Globular, with tubular neck and short foot. Invested with a rare even glaze of dense character. Has carved wood stand. *Height, 5½ inches.*

6 SQUARE PORCELAIN BRUSH HOLDER

Ch'ien Lung.

Tall square form with small feet. Enriched with slightly raised panels of birds and flowers, in pleasant enamel colors. The border holds many red bats flying among cloud-scrolls in blue. Has carved wood stand. *Height, 5 inches.*

7 POWDER-BLUE BOTTLE VASE

Ch'ien Lung Period.

Globular, with sloping shoulder and long tubular neck. Invested with a brilliant even glaze of Mazarin-blue. Has carved wood stand. *Height, 8¾ inches.*

8 TWO DECORATED FU-LIONS

K'ang Hsi Period.

Standing, of ferocious aspect. Highly conventionalized modelling. Decorated with rare apple-green, rich yellow and aubergine glazes. *Height, 4½ inches.*

9 TWO SMALL STARCH-BLUE VASES

Ch'ien Lung Period.

- a. Flask-shape, with two flat tubular handles on shoulder. The body holds several depressed bands and vertical ridges. Invested with a clear starch-blue glaze.
- b. Squat flask-shape. Invested with a starch-blue glaze. Have carved wood stands. *Respective heights, 4¾ inches and 4 inches.*

10 TWO ROUND ROUGE BOXES AND COVERS

Ch'ien Lung Period.

Finely potted with rimmed tops, decorated in cobalt-blue, one with dragon and wave motives, the other, a Taoist Immortal in landscape. Have carved wood stands. *Diameter, 2¼ inches.*

11 TALL BLUE GALLIPOT

Ch'ien Lung Period.

Inverted pear-shape elongated to a spreading foot; small neck. Invested with Mazarin peau-d'orange glaze of even quality. Has carved wood stand. *Height, 6½ inches.*

12 TWO DECORATED FU-LIONS

K'ang Hsi Period.

Archaic modelling. Seated on their haunches, each with one fore-paw raised, one on a brocaded ball, the other playing with its cub. On open, scrolled oblong pedestals, glazed with aubergine. The figures with apple-green, yellow and aubergine glazes. *Heights, 5½ inches.*

13 BLUE AND WHITE PORCELAIN GINGER JAR AND WRITER'S POT

K'ang Hsi Period.

- a. Ovoid jar with sprays of growing prunus flowers in reserve, on rich cobalt-blue crackling-ice ground.
- b. Dome-shape pot, so called soft paste, finely penciled with lotus-scroll band on foot, and neck with delicate ju-i bandings in cobalt-blue on crackled white ground. Have carved wood stands. *Respective heights, 5 inches and 1¼ inches.*

14 BLANC-DE-CHINE FIGURE

Ming Dynasty.

One of the Eight Taoist Immortals, "Lu Tung Pin." Seated, with his feet on a scrolled dais, attired in voluminous robes, and a curious lobed cap. Invested with luminous glaze of cream-white. (Sword missing.) *Height, 6 inches.*

15 BLUE AND WHITE PORCELAIN BOTTLE

Ch'ien Lung Period.

Inverted pear-shape with long tubular neck and short

foot. Enriched in brilliant cobalt-blue with mountainous landscape and figure; dense white ground. Has carved wood stand. *Height, 7½ inches.*

16 DAINY BLUE BRUSH HOLDER

Ch'ien Lung Period.

Four-lobed, with straight sides, on small ju-i feet. Enriched with two landscape panels finely executed in delicate enamels; ground modeled to simulate shark-skin and glazed in blue over which are scrolls and various characters in gilding. Interior glazed brilliant turquoise-blue. Has carved wood stand. *Height, 3½ inches.*

17. CELADON VASE AND BASKET

Ch'ien Lung Period.

- a. Bottle-shape with spreading lip, invested with pale starch-blue glaze in which a giant crackle has developed. Has carved wood stand.
- b. Openwork hexagonal basket, the panels in alternate glazes of green, crimson, yellow and blue. *Respective heights, 5½ inches and 4 inches.*

18 TWO SMALL PORCELAIN VASES

Ch'ien Lung.

- a. Club-shape, invested with a beautiful deep apple-green glaze in which a minute crackle appears. (Rim chipped.)
- b. Deep bowl-shape with flat shoulder, incurvate neck and high spreading foot; invested with a fine brown-black glaze. *Respective heights, 4½ inches and 4¾ inches.*

19 BLUE AND WHITE PORCELAIN JAR

K'ang Hsi Period.

Ovoid, with short collar. Gadrooned body, enriched in cobalt-blue with three phoenixes, the foot and shoulder with bands of emblems. Dense lustrous white glaze. Has carved wood cover and stand. *Height, 5½ inches.*

20 DECORATED BUDDHISTIC FIGURE

K'ang Hsi Period.

“Maitreya” the Budhistic Messiah, seated, and depicted as an obese Chinaman, holding a tablet on his right knee.

Enriched with apple-green, yellow and white glazes. Has carved wood stand. *Height, 3 inches.*

21 BLUE AND WHITE PORCELAIN BOTTLE AND SMALL BOWL

K'ang Hsi Period.

- a. Graceful neck with mid-rib and rimmed lip. Finely penciled in cobalt-blue with lotus-scrolls; on the shoulder and lip a small scroll band; neck enriched with a series of leaves and a ju-i band.
- b. Bowl, invested with splashes of green, aubergine and yellow glazes. Have carved wood stands. *Respective heights, 6 inches and 1¼ inches.*

22 DECORATED VASE AND POWDER-BLUE VASE

K'ang Hsi Period.

- a. Club-shaped, decorated with peony-tree in blossom, and bird, in color enamels.
- b. Gourd-shape with high spreading foot. Invested with a mottled Mazarin-blue glaze of fine quality. Have carved wood stands. *Respective heights, 7½ and 6¼ inches.*

23 POWDER-BLUE BOWL

K'ang Hsi Period.

Flaring sides with straight foot. Finely potted, the exterior invested with a delicately mottled Mazarin-blue glaze, enriched with gilded birds and fruit sprays. Interior lip band showing emblematic figures; lotus spray in centre in colored enamels. Has carved wood stand. *Diameter, 7½ inches.*

24 CELADON WINE POT

Sung Dynasty, Contemporary Korean.

Bulbous, gadrooned body, slender flaring neck, scroll strap handle and high curved spout. Invested with a mottled gray-white glaze. Has carved wood stand. *Height, 9¼ inches.*

25 BLUE AND WHITE PORCELAIN BOWL

K'ang Hsi Period.

Inverted bell-shape on short foot. Decorated in cobalt-

blue with continuous scene, "The Eight Taoist Immortals." Supported by various symbols on wave-forms. Interior with symbolic figure riding a phoenix. (Rim chips.) Has carved wood stand. *Diameter, 6 inches.*

26 TWO IMPERIAL YELLOW BOWLS

K'ang Hsi Period.

Inverted bell-shapes on short feet. Exteriors finely incised with five-clawed dragons seeking the sacred pearl of power among the clouds; at the feet water formations. Invested with a beautiful yellow glaze; interiors finely glazed in white. Blue imperial mark of the period under glaze on feet. Have carved wood stands. *Diameters, 5¼ inches.*

27 TURQUOISE-BLUE BOTTLE

K'ang Hsi Period.

Inverted pear-shape with short tubular neck and straight foot. Invested with deep rich turquoise-blue glaze. Has carved wood stand. *Height, 6 inches.*

28 TWO DECORATED GROUPS

K'ang Hsi Period.

In each are two happy poets in scant robes, standing on a rockwork base. Enriched with apple-green, yellow, white and aubergine glazes. Have carved wood stands. *Heights, 5½ inches.*

29 MOONLIGHT-GRAY CELADON VASE

Ch'ien Lung Period.

Inverted pear-shape with open throat on spreading foot. Ribbed shoulder holding two rudimentary elephant and ring handles. Slightly modeled in the paste with archaic symbols and scrolls. Invested with a beautiful pellucid even glaze of moonlight-gray. Has carved wood stand. *Height, 8 inches.*

30 FIVE-COLOR ENAMELED VASE

K'ang Hsi Period.

Elongated ovoid with incurvate neck and spreading lip. Interesting decoration of a noble archer with an attend-

ant carrying bow and arrows; at shoulder a band of pink blossoms in reserve on green brocaded ground; reverse holds a long inscription in black, added and re-glazed at a later period. Has carved wood stand. *Height, 10 inches.*

31 BLUE AND WHITE PORCELAIN VASE

K'ang Hsi Period.

Ovoid, with tubular neck and slightly expanding lip. Enriched with an all-over pattern of conventionalized lotus-scrolls in deep cobalt-blue. Small bandings at lip and shoulder. (Ming mark on foot apocryphal.) *Height, 9 inches.*

32 POWDER-BLUE VASE AND BRUSH-HOLDER

K'ang Hsi Period.

a. Club-shaped vase, invested with a Mazarin-blue glaze enriched with gilded blossoming prunus. (Lip repaired.) Has carved wood stand.

b. Brush-holder, tubular, enriched in three-colored enamels with growing prunus in blossom, and birds. Has carved wood stand. *Respective heights, 5 inches and 5½ inches.*

33 TWO IMPERIAL YELLOW BOWLS

K'ang Hsi Period.

Flaring sides, on short feet. Rims and feet marked with double lines, enriched with lightly incised symbolic medallions and cloud-forms, at the feet with ju-i bands. Under-glaze mark under feet. Have carved wood stands. *Diameter, 4¾ inches.*

34 TURQUOISE-BLUE BOWL

K'ang Hsi Period.

Inverted bell-shape on short feet. Interior and exterior invested with a delightful and even glaze of deep turquoise-blue. Has carved wood stand. *Diameter, 6½ inches.*

35 BLUE AND WHITE PORCELAIN GINGER JAR

K'ang Hsi Period.

Ovoid, decorated with growing plants in blossom, butter-

flies and emblems. Cobalt-blue on white ground. Has carved wood cover and stand. *Height, 7 inches.*

36 DECORATED PORCELAIN BOWL

K'ang Hsi Period.

Inverted bell-shape, short foot. Interior and exterior invested with irregular splashes of apple-green and yellow on gray-white ground. Has carved wood stand. *Diameter, 7 $\frac{1}{4}$  inches.*

37 BLUE AND WHITE PORCELAIN GINGER JAR

K'ang Hsi Period.

Ovoid, with short collar. Decorated in rich cobalt-blue with continuous landscape in which appear two groups of ladies and many happy children. "Domestic Happiness." Resonant white glaze. Has carved wood cover and stand. *Height, 9 $\frac{1}{4}$  inches.*

38 ENAMELED FIGURE AND PEDESTAL

K'ang Hsi Period.

"Shou Lao," the God of Longevity, seated, holding in his right hand a small ju-i sceptre; his robes enameled apple-green enriched with Shou medallions of aubergine and yellow, in circular reserves. He wears a box-like cap edged with turquoise-blue. The features, hands and cap are in the biscuit. (One hand missing.) Moulded pedestal of an earlier date in turquoise-blue and aubergine. *Total height, 11 $\frac{1}{2}$  inches.*

39 BLUE AND WHITE PORCELAIN GINGER JAR

K'ang Hsi Period.

Ovoid, decorated in cobalt-blue with temple scene, two supplicants before a priest. Lustrous white glaze. Has carved wood cover and stand. *Height, 7 inches.*

40 DECORATED BRUSH HOLDER

K'ang Hsi Period.

Truncated form, enriched with five-color enamels. "Shou Lao," the God of Longevity, in voluminous flying robes, carries a basket of flowers; his familiar, a spotted deer, holds a fungus in its mouth, and a small attendant also carries a fungus stem. Has carved wood stand. *Height, 5 inches.*



- 41 BLUE AND WHITE PORCELAIN GINGER JAR  
K'ang Hsi Period.  
Ovoid, decorated in cobalt-blue with landscape depicting a mythical scene, "Pu-yen" riding a weird Fu-lion, several disciples in attendance. Has carved wood cover and stand. *Height, 7¼ inches.*
- 42 TWO TURQUOISE-BLUE WRITER'S RESTS  
K'ang Hsi Period.  
A range of peaks of the sacred mountains; one set on an open floral and flying-bat base; the other has carved wood stand. *Respective lengths, 3½ inches and 5 inches.*
- 43 TWO DECORATED FU-LIONS  
K'ang Hsi Period.  
Archaic modelling. Seated on their haunches, each with one fore-paw raised, one on a brocaded ball, the other playing with its cub. On open, scrolled oblong pedestals, glazed with aubergine. The figures with apple-green, yellow and aubergine glazes. *Heights, 5½ inches.*
- 44 SMALL BLUE AND WHITE PORCELAIN TEMPLE  
JAR  
K'ang Hsi Period.  
Inverted pear-shape with broad incurvate foot. Decorated in sparkling blue on a soft cream-white ground. Clusters of prunus blossom regularly placed on a crackling-ice spider-web of blue; ju-i band on collar. (Has been repaired.) Has carved wood cover and stand. *Height, 9 inches.*
- 45 DECORATED TAOISTIC FIGURE  
Ming Dynasty.  
"Shou Lao," the God of Longevity. Seated, attired in archaic blue robes and curious, box-like hat. Smiling, white bearded countenance. (Hand chipped.) *Height, 8½ inches.*
- 46 GREEN AND AUBERGINE PLATE  
K'ang Hsi Period.  
Shallow cavetto and flaring flange. Decorated with a landscape in which is a large lake with boat and boat-

man. Executed in apple-green, aubergine and yellow enamels. Has carved wood stand. *Diameter, 10½ inches.*

47 LARGE BLUE AND WHITE PORCELAIN VASE

K'ang Hsi Period.

Baluster-shape. Decorated in deep cobalt-blue with tree-peonies and prunus-trees in blossom growing over rocks on which stands a pheasant; a flock of birds occupies the reverse. The neck is enriched with small dentate fret and ju-i bands. Has carved wood stand. *Height, 1 foot 5½ inches.*

48 FOUR EGG-SHELL PORCELAIN CUPS

K'ang Hsi Period.

Delicately formed, enriched at the foot with a band of ju-i scroll in blue. Fine lustrous white glaze of great purity. Palace mark of the period in blue, under glaze on foot. Have brocade stands. *Heights, 2 inches.*

49 TWO BUDDHISTIC FIGURES

K'ang Hsi Period.

"Maitreya" the Buddhist Messiah, depicted as an obese Chinaman, seated and holding a rosary in his left hand. Invested with a brilliant turquoise-blue glaze. *Heights, 2¾ inches.*

50 DECORATED CELADON VASE

K'ang Hsi Period.

Inverted pear-shape with spreading foot, incurvate neck and trumpet mouth. Decorated with growing prunus and rocks in reserve, and painted in blue. Invested with soft green-gray glaze. Has carved wood stand. *Height, 7½ inches.*

51 CHARMING BLANC-DE-CHINE FIGURE

Ch'ien Lung Period.

"Kuan Yin," the Goddess of Mercy, seated on a rocky base, one leg under her, the other raised; in voluminous robes which conceal one hand, and cowed head dress. At her right is a pedestal holding a box and a small vase. Invested with a resonant white glaze. *Height, 10 inches.*

52 DECORATED CELADON VASE

K'ang Hsi Period.

Bulbous, with wide neck and rimmed lip, and spreading foot. Modeled lightly in the biscuit with a three-clawed dragon-monster rising from water-forms. Invested with a pale grayish-green glaze. Has carved wood stand. *Height, 8 inches.*

53 BLUE AND WHITE PORCELAIN GINGER JAR

K'ang Hsi Period.

Ovoid. Groups of prunus-blossom in reserve, are regularly placed on a soft, rich cracking-ice cobalt-blue ground. Has carved wood cover and stand. *Height, 7 inches.*

54 DECORATED PORCELAIN FIGURE

Ming Dynasty.

"Kuan Ti," God of War. Seated, with protuberant belly, flowing blue robes which conceal his hands. He wears a tiara and high head-dress and long chin-beard. The face left in the gray biscuit. (Part of belt missing.) Oblong pedestal and chain in light blue. *Height, 10 inches.*

55 LARGE BLUE AND WHITE GINGER JAR

K'ang Hsi Period.

Ovoid. Enriched in dark lustrous cobalt-blue with continuous landscape in which figures occur. Interesting small-crackled glaze of warm cream-white. Has carved wood cover and stand. *Height 9 inches.*

56 DECORATED OCTAGONAL PLATE

Yung Chêng Period.

Deep centre and rimmed flange. Daintily decorated in enamel colors with growing plants in blossom, and birds; the border of a series of half-blossoms and leaves. Dense white ground. Has carved wood stand. *Diameter, 9½ inches.*

57 POWDER-BLUE VASE

K'ang Hsi Period.

Baluster-shape with straight collar. Invested with a finely mottled Mazarin-blue glaze. Has carved wood stand. *Height, 9 inches.*

58 DECORATED ANIMAL FIGURE

K'ang Hsi Period.

Recumbent dog; archaic modelling, invested with apple-green, yellow and aubergine glazes. Has carved wood stand. *Length, 3½ inches.*

59 LARGE DEEP PLATE

K'ang Hsi Period.

Shallow bowl-shape. The centre depicts the famous fisherman, "Kan-ti-Kwang" of pre-Han days, being surprised by a cavalcade of mandarins while he is plying his craft. "Kan-ti-Kwang" afterwards became Emperor of China. In five-color enamels; beautiful flower and brocade border interrupted by six floral medallions in reserve. Has carved wood stand. *Diameter, 1 foot 2 inches.*

60 BEATIFUL CELADON WRITER'S JAR

K'ang Hsi Period.

Plain bell-shape with wide mouth. Lightly modeled in the biscuit with irregular cloud-scrolls of great elegance. Invested with a lustrous pale gray-green glaze. Blue mark of the period under glaze on foot. Has carved wood stand. *Height, 3 inches.*

61 TWO BLANC-DE-CHINE LIBATION CUPS

Ming Dynasty.

Interesting models, adapted from an old Chou bronze. Helmet shape, three legs and side loop handles. Invested with a lustrous white glaze. *Height, 2½ inches.*

62 SEA-GREEN CELADON VASE

Ch'ien Lung Period.

Ovoid on short foot; small incurvate neck with curled lip. Enriched with two groups of birds and growing flowers, modeled in slight relief in white reserve. Invested with an even sea-green glaze. Has carved wood stand. *Height, 10 inches.*

63 PALE GRAY CELADON VASE

Ch'ien Lung Period.

Ovoid, with incurvate neck and spreading lip. Finely modeled in the biscuit with flying bats and peach-sprays

in fruit (emblems of happiness and longevity); at foot and shoulder a series of flutes. The neck enriched with two butterflies and a band of key-fret. Invested with a brilliant pale gray glaze. Has carved wood stand. *Height, 8½ inches.*

64 BLANC-DE-CHINE GROUP

Ch'ien Lung Period.

“Kuan Yin,” the Goddess of Mercy and Motherhood. Seated, attired in flowing robes, cowled head-dress and tiara, necklace and jewelled breast-piece. She holds an infant carrying ju-i sceptre on her knee, at her feet is a coiled dragon. Two attendants are to left and right and above them on pedestals are a vase and a scroll. Fukien, lustrous white glaze. *Height, 8½ inches.*

65 BOTTLE-SHAPE VASE

Ch'ien Lung Period.

Inverted pear-shape with graceful, slender tubular neck and short foot. Invested with a pale turquoise-blue glaze over which is a regular marbling of a darker blue. Has carved wood stand. *Height, 7¾ inches.*

66 THREE MOUNTAINS OF FRUIT

K'ang Hsi Period.

One shallow, circular dish holds new walnuts piled in conical form; one, Buddha's hand citrons, and another, peaches. In apple-green, yellow and aubergine glazes. (Various repairs and chips.) Have carved wood stands. *Heights, 6 inches.*

67 DECORATED JARDINIÈRE

Ch'ien Lung Period.

Elongated hexagon, tapering sides, wide rim and small ju-i feet. Enriched in five-color enamels with detached sprays of flowers and fruit. Has carved wood stand. *Height, 6½ inches; width, 10½ inches.*

68 DECORATED GINGER JAR

Ch'ien Lung Period.

Ovoid, finely enriched in five-color enamels with delightful detached sprays of poppies, white hawthorn and

peonies, birds and butterflies. Has carved wood cover and stand. *Height, 7½ inches.*

69 DECORATED TAOISTIC FIGURE

K'ang Hsi Period.

“Li-Tieh-Kuai,” one of the Eight Taoist Immortals, the bonze with the iron crutch. Standing with one leg raised, attired as a mendicant, alms-bowl in his left hand. On shaped base. Enriched with aubergine, apple-green, black and yellow glazes. Has carved wood stand. *Height, 5 inches.*

70 TWO SQUARE PORCELAIN JARDINIERES

Ch'ien Lung Period.

Bell-shape on short feet. Dainty decoration of growing flowers, “Hai-tang,” in pink and green enamels; at the feet series of leaves in purplish-pink. Have carved wood stands. *Heights, 6½ inches and 7½ inches.*

71 CLUB-SHAPED VASE

Ch'ien Lung Period.

Short neck, flaring lip. Interesting decoration of rocky and mountainous landscape with a large lake on which is a boat with its occupant rowing towards two figures on the shore. In blues, crimson and green on dense white glaze. (Lip chipped.) *Height, 10 inches.*

72 SANG-DE-BOEUF BOTTLE

Ch'ien Lung Period.

Globular, with graceful incurvate neck and spreading lip on short foot. Charming peau-d'orange glaze of rose and deep crimson. Has carved wood stand. *Height, 12½ inches.*

73 CELADON PORCELAIN BEAKER

Ch'ien Lung Period.

Inverted pear-shape with slight spreading foot, flaring neck, trumpet lip. The body enriched with upper and lower banding of key-fret holding a beautiful incuse motive of lotus scrolls; neck with a series of leaves. Invested with a pellucid glaze of pale sea-green. Has carved wood stand. *Height, 12½ inches.*

74 THREE DAINTY EGG-SHELL PORCELAIN CUPS

K'ang Hsi Period.

Decorated in three-color enamels with growing pink prunus in blossom, and other flower sprays, on a pure white glaze. Double ring and mark in blue on feet. Have carved wood stands. *Heights, 2 inches.*

75 LARGE GRAY-BLUE VASE

Ch'ien Lung Period.

Bowl-shape, with short foot, sloping shoulder, gently ribbed incurvate neck and slightly expanding mouth. Two open bamboo-stem handles enrich the neck. Coated with a heavy, trickling unctuous glaze of charming gray-blue. *Height, 13½ inches.*

76 TWO DECORATED FIGURES

K'ang Hsi Period.

- a. Seated figure of a sage; invested with a brilliant yellow glaze. White features and black cap.
- b. Chinese junk, glazed in apple-green, yellow, white and aubergine. Have carved wood stands. *Respective heights, 3½ inches and 3 inches.*

77 LARGE MAZARIN-BLUE BOTTLE

Ch'ien Lung Period.

Globular with tall tubular neck. Invested with a charming even Mazarin-blue glaze of the peau-d'orange type. Has carved wood stand. *Height, 13½ inches.*

78 LARGE ROUND CELADON JARDINIÈRE

Ch'ien Lung Period.

Outcurving sides and inset foot. Interesting incised enrichment of lotus scrolls finished with a leaf band at the foot. Interior lip with band of key-fret. Invested with a very delicate pale blue-gray glaze which also coats the upper portion of the interior. Has carved wood stand. *Height, 9 inches; diameter, 12½ inches.*

79 BEAUTIFUL MIRROR-BLUE VASE

Ch'ien Lung Period.

Club-shaped with incurvate neck and spreading lip. In-

vested with an even pellucid glaze of Mazarin-blue. Has carved wood stand. *Height, 9 inches.*

80 FOUR DECORATED FU-LIONS

K'ang Hsi Period.

Archaic modeling. Standing figures on shaped bases. Finely glazed with apple-green, yellow and aubergine. (Slight chips.) *Heights, 4 inches.*

81 BEAUTIFUL SANG-DE-BOEUF BOTTLE

Ch'ien Lung Period.

Graceful tall neck, globular body and short foot. Invested with a reflecting glaze of charming rich crimson. The gray biscuit is exposed at the lip. *Height, 10 inches.*

82 BLANC-DE-CHINE VASE

Ch'ien Lung Period.

Globular body on short foot; tubular neck and spreading lip with straight rim. The body and neck sustain a series of small ribs. Coated with an unctuous gray-white glaze of even quality. Has carved wood stand. *Height, 7 inches.*

83 TWO BIRDS

K'ang Hsi Period.

Each perched on an open rockwork base. Decorated with beautiful apple-green in two tones, yellow and aubergine glazes. *Heights, 7 inches.*

84 BLANC-DE-CHINE BOWL

Ch'ien Lung Period.

Somewhat ovoidal, with rounded lip. Modeled in the paste in slight relief with wondrous dragons seeking the sacred pearl of power amid cloud forms. Resonant hard porcelain invested with a lustrous white glaze. Has carved wood stand. *Diameter, 7½ inches.*

85 MIRROR-BLUE BRUSH HOLDER

Ch'ien Lung Period.

Quadrilateral, on high, straight circular foot; sloping round neck. Invested with a reflecting glaze of brilliant Mazarin-blue. Has carved wood stand. *Height, 6¾ inches.*



86 LARGE CELADON VASE

Ch'ien Lung Period.

Oviform with incurvate neck and rounded upturned lip. Invested with a pearl-gray glaze in which two distinct giant crackles appear. A strong black crackle and a light brown crackle which seems to be under the black. Has carved wood stand. *Height, 11 inches.*

87 TWO DECORATED FU-LIONS

K'ang Hsi Period.

Seated on their haunches, each with raised front paw. Rising at their backs are taper holders. Strong archaic modeling of a high order. Open scroll oblong pedestals. Glazed with rare apple-green, yellow and aubergine. *Heights, 8 inches.*

88 BLUE AND WHITE PORCELAIN GINGER JAR

Ch'ien Lung Period.

Oviform with slightly curved collar. Soft paste type, beautifully penciled with an all-over pattern of small leaf-scrolls, holding large chrysanthemum blossoms at wide intervals; on the shoulder is a fine ju-i band flanked by a narrow brocade banding, at the foot a series of spear-like forms. Cobalt-blue on creamy-white ground. Has carved wood cover and stand. *Height, 8 inches.*

89 DECORATED PORCELAIN BOTTLE

Ch'ien Lung.

Inverted pear-shape with tubular neck and straight foot. Archaic in treatment. A winged Kylin among rocks on which stand two curious birds. Decorated in blue with peachbloom areas on white ground. *Height, 11 inches.*

90 GREEN ENAMEL VASE

Kea King Period.

Globular, extending into a truncated form towards the foot; short incurving small neck. Enameled with flower-sprays in colors on a soft apple-green ground. Ju-i band at neck and foot. Has carved wood stand. *Height, 7 inches.*

91 DECORATED HEXAGONAL JARDINIÈRE

Ch'ien Lung Period.

With tapering sides on ju-i feet. Each panel enriched with a variety of growing and blossoming plants. Magnolia, peonies, prunus, lotus and poppies are presented in their lustrous colors on a gray-white ground. Has carved wood stand. *Height, 7 inches; width, 11 inches.*

92 TWO IMPERIAL GREEN AND WHITE PORCELAIN JARS

Ch'ien Lung Period.

Ovoid, with short straight necks, finely enriched with two small ju-i bands on the shoulders which hold the "Pa-Chi-Hsiang" or the eight Buddhist symbols of Happy Augury; below two weird five-clawed dragon-monsters among cloud-forms are seeking the sacred pearl of power. At the feet, interesting series of ju-i motives. Enameled in lustrous emerald-green on pellucid white glaze. (One lip chipped.) Mark of period under feet. Have carved wood covers and stands. *Height, 8 inches.*

93 INTERESTING CELADON PILGRIM BOTTLE

Ch'ien Lung Period.

Flanged oval body, moulded and flaring neck which develops a four-lobed lip, on elongated oval foot. Two pierced double-circle handles coated with a pale sea-green glaze. Each side invested with two moulded and shaped reserve medallions, the lower enriched with landscapes, the upper with sprays of flowers in cobalt-blue and rusty pink. Has carved wood stand. *Height, 14½ inches.*

94 BEAUTIFUL SANG-DE-BOEUF VASE

Ch'ien Lung Period.

Bottle-shape, with tall slightly incurvate neck, on short foot. Invested with a rich crimson glaze of a slightly Flambé type. At the lip the gray biscuit is exposed. Has carved wood stand. *Height, 14½ inches.*

95 TWO DECORATED YELLOW JARS AND COVERS

Ch'ien Lung.

Globular; inset covers with small terminals. Decorated

with "One Hundred Butterflies" in pink, blue and lavender on an interesting yellow ground. Have carved wood stands. *Heights, 8½ inches and 9 inches.*

96 LARGE DECORATED PLAQUE

Ming Dynasty.

"Shou Lao" and the Eight Taoist Immortals. The God of Longevity is seated in a grotto, his familiar, a spotted deer, is beside him, and the Immortals, with their various attributes, are grouped nearby. Painted in brilliant red, yellow, blue, green and aubergine on white ground. Has carved wood stand. *Diameter, 14 inches.*

97 FIVE DECORATED FU-LIONS

K'ang Hsi Period.

Archaic modeling. Standing figures on shaped base. Finely glazed with apple-green, yellow and aubergine. (Slight chips.) *Height, 4 inches.*

98 LARGE IMPERIAL DEEP BOWL

Ming Dynasty.

Six-lobed, contracting towards the foot; wide-rimmed flange. Interior and flange decorated with a continuous landscape holding mythical animals in green, brown, and blue. Centre in blue, depicting a Kylin as King of Beasts. Exterior with flower sprays, and continuous scroll under flange. (Has been repaired.) Palace mark of the Wan Li period in sunk medallion in fine under-glaze blue under foot. Has carved wood stand. *Diameter, 14½ inches.*

99 THREE-COLOR VASE

Ming Dynasty.

Ovoid, with short incurvate neck. Interesting decoration in red, green and blue, of beautiful peony sprays, among which occur two spirited Fu-lions. Neck a series of spear-shaped leaves alternating in color. Has carved wood stand. *Height, 7½ inches.*

100 INTERESTING POTTERY TRIPOD

Ming Dynasty.

Bowl-shape with straight collar and extending lip, on

three ogre-head feet. Two fish rising from the bowl with fins grasping the rim, modeled in full relief, form the handles. The body modeled with floral motives and glazed with a remarkably dark rich aubergine, almost black in the depths; the legs in turquoise-blue. (Slight chips.) Has carved wood stand. *Height, 9 inches.*

101 RARE BLUE AND WHITE PORCELAIN BOWL  
Ming Dynasty.

On short foot. Decorated in cobalt-blue in an unusual manner; rising from the foot at regular intervals, are four trees, bamboo, chrysanthemum, fir and prunus, the stems of each twist and loop in such a manner as to form the Chinese characters, Fu, Lou, Shou, Shi, or Happiness, Abundance, Longevity and Riches. Has carved wood stand. Imperial Palace mark of the Wan Li period in under-glaze blue under foot. *Diameter, 11¾ inches.*

102 RICH FLAMBE VASE  
Ming Dynasty.

Ovoid, elongated wide foot, small neck and round lip. Beautiful rich crimson glaze with small flambés of blue and cherry. Has carved wood stand. Inlaid mother-of-pearl mark in lacquer set in under foot. *Height, 9¼ inches.*

103 CIRCULAR CELADON JARDINIÈRE  
Ming Dynasty.

Sloping sides with overlapping descending bands; the centre enriched with the eight trigrams of divination. On three small elephant feet. Invested with a delightful sea-green glaze. *Diameter, 9 inches.*

104 RARE CELADON BOWL  
Ming Dynasty.

Flaring sides, straight foot. The exterior beautifully modeled in the paste in low relief with many graceful lotus sprays. Invested with an unctuous pale grey glaze in which a fair sized crackle has developed. On the interior, an all-over decoration of blue cloud-forms holding a five-clawed dragon seeking the sacred pearl of power. Has carved wood stand. *Diameter, 9½ inches.*

105 SQUARE PORCELAIN LANTERN

Ming Dynasty.

Rounded sides. Each panel decorated with two weird dragons amid flowers, lightly modeled, alternately in green, red and yellow. Each pair of dragons is interrupted by the head of a Fu-lion modeled in high relief. Metal crowning rim, modern. Has tall carved wood pedestal. *Height, 8 inches.*

106 BEAUTIFUL GREEN CELADON PLATE

Ming Dynasty.

Deep bowl-shape, with moulded rim, on short foot. Lightly modeled in the biscuit; centre a lotus spray surrounded by a wave-scroll and rock banding. Invested with a rich deep sea-green glaze. *Diameter, 15 inches.*

107 TWO DECORATED FU-LIONS

K'ang Hsi Period.

Seated on their haunches, each with one fore-paw raised, one playing with its cub. At their backs rise taper holders. On open scroll oblong pedestals. Invested with beautiful apple-green, yellow and aubergine glazes. (One chipped.) *Heights, 6½ inches.*

108 INTERESTING CELADON JARDINIÈRE

Ming Dynasty.

Low bowl-shape on three T'ao-t'ieh ogre-head feet. The body lightly modeled with wave-diapers holding pearls. Invested with a pale gray-green glaze. Has carved wood stand. *Diameter, 12½ inches.*

109 DECORATED GINGER JAR

Ming Dynasty.

Ovoid, with wide open throat. Decorated in red, blue, green, aubergine and yellow, with domestic landscape "Mother and boys playing, one flying a kite." Four perforations on shoulder for suspension. Has carved wood cover and stand. *Height, 7 inches.*

110 LARGE CELADON VASE

Ming Dynasty.

Inverted pear-shape with slightly incurvate neck (has

been cut), moulded shoulder. Decorated with lightly modeled sprays of flowers. Invested with a brilliant sea-green glaze. Has carved wood stand. *Height, 14 inches.*

111 LARGE TURQUOISE VASE

Ming Dynasty.

Bottle-shape on straight foot; trumpet lip. Delightfully incised with dragons and phoenix amid cloud-scrolls. Invested with a rich even turquoise-blue glaze. (Lip chipped.) *Height, 16 inches.*

112 CELADON BUDDHISTIC FIGURE

Ming Dynasty.

“Bôdhidharma” the twenty-eighth and last Indian Patriarch, and the first Chinese Patriarch known as “the wall gazing Braham.” Standing, with cowed head, and robes drawn round him concealing his hands. Invested with a creamy-white glaze in which is a regular brown crackle. The features are left in the biscuit except eyes and eyebrows. *Height, 9 inches.*

113 BLUE AND WHITE PORCELAIN GINGER JAR

Ch'ien Lung Period.

Ovoidal, with small collar. Enriched in brilliant cobalt-blue with centre band of archaic animalistic scrolls, at neck a ju-i and a flower banding; at the foot a banding of shaped leaves. Has carved wood cover and stand. *Height, 7 $\frac{3}{4}$  inches.*

114 RARE CELADON TRIPOD

Sung Dynasty.

Low bowl-shape, incurvate collar, spreading lip, on three stump feet. Over the bowl and continuing down the feet, is the V rib so much admired by the Chinese connoisseur. Invested with a varying pale gray-green glaze in which a giant crackle occurs. (Lip chips.) Has carved wood stand. *Height, 5 inches width, 6 inches.*

115 BLUE AND WHITE PORCELAIN JARDINIÈRE

K'ang Hsi Period.

High bowl-shape with flat lip. Decorated in rich cobalt-

blue with three four-lobed reserve medallions holding many symbolic emblems—"The Hundred Antiques." Sprays of descending hawthorn in reserve, are on the crackling-ice ground of blue. *Height, 7½ inches; diameter, 9 inches.*

116 TWO DECORATED FU-LIONS

K'ang Hsi Period.

Archaic modeling. Seated on their haunches, each with one forepaw raised, one on a brocaded ball, the other playing with its cub. On moulded hexagonal bases, glazed with aubergine. The figures with apple-green, yellow and aubergine glazes. *Heights, 6 inches.*

117 BLANC-DE-CHINE GROUP

Ch'ien Lung Period.

"Kuan Yin," the Goddess of Mercy, is seated on a rocky base holding an infant in her arms; she is attired in flowing robes and cowled head-dress. Beside her are two pedestals, one holding a vase, the other a bird, and standing at her feet are two supplicants for her grace. Lustrous white glaze. *Height, 10 inches.*

118 CELADON BUDDHISTIC STATUETTE

Sung Dynasty.

One of the Five Gods of Heaven, seated and attired in flowing embroidered robes, the divine tortoise and coiled snake at his feet. Invested with a pale gray-green glaze. (Foot chipped.) *Height, 10½ inches.*

119 LARGE BLUE AND WHITE PORCELAIN BOTTLE

Ch'ien Lung.

Globular, with slight tapering neck. The "Eight Sacred Horses of Mu-Wang" are depicted in a landscape shaded with trees. Executed in rich cobalt-blue on a dense white ground. Has carved wood stand. *Height, 14¼ inches.*

120 POTTERY FIGURE

Ming Dynasty.

"Kuan Ti," God of War. Seated, with protuberant belly and flowing robes, and curious jewelled cap with two ribbons depending to shoulder. Invested with a pale *café au lait* glaze. (Chipped.) *Height, 9½ inches.*

121 BLUE AND WHITE PORCELAIN JAR

K'ang Hsi Period.

Inverted pear-shape, long incurvate foot and short collar (has been cut down). Enriched in rare deep cobalt-blue with reserved growing magnolia-trees in blossom, on irregular clouded ground. Collar with small zig-zag band. Dense lustrous white glaze. Has carved wood cover and stand. *Height, 10½ inches.*

122 BLANC-DE-CHINE FIGURE

Ming Dynasty.

"Kuan Yin," the Goddess of Everlasting Mercy and Motherhood. Standing on a cloud-scroll base, clad in flowing robes and high cowed head-dress with jewelled tiara, the urna jewel in her forehead, and on her breast a jewelled star. Invested with a luminous cream-white glaze. (Tiara chipped, hands restored.) *Height, 1 foot 5½ inches.*

123 BLUE AND WHITE PORCELAIN TEMPLE JAR

K'ang Hsi Period.

Inverted pear-shape with short collar and wide incurvate foot. Enriched in beautiful soft cobalt-blue with, seemingly, four panels to accentuate the scenes, but really with a continuous landscape holding many figures, depicting the four elegant accomplishments, "Music, Literature, Painting, and Chess"; under are the "Hundred Happy Boys" at their games and pranks; at foot and shoulder a dentate band. The collar holds detached symbolic emblems. Beautiful lustrous white glaze. Has carved wood cover and stand. *Height, 1 foot 1 inch.*

[*Illustrated.*]

124 SANG-DE-BOEUF VASE

Ch'ien Lung Period.

Globular, with long tubular neck, spreading lip and straight foot. Slight bamboo ribbing on body and neck. Invested with a delightful rich resonant crimson glaze. Has carved wood stand. *Height, 9¼ inches.*

125 GRACEFUL PEACH-BLOW VASE

K'a Hsi Period.

Ovoid, with long neck. Invested with a charming peach





BLUE AND WHITE PORCELAIN TEMPLE JARS

[ NUMBERS 123 AND 126 ]



glaze which deepens as it descends to the foot. Has carved wood stand. *Height, 8 inches.*

126 BLUE AND WHITE PORCELAIN TEMPLE JAR

K'ang Hsi Period.

Inverted pear-shape elongated into a broad incurvate foot; straight collar. Enriched in soft, lustrous cobalt-blue with sprays of prunus in flower and bud, in reserve on a crackling-ice ground. Small zig-zag bandings at shoulder and foot; ju-i banding on collar. Fine dense white glaze. Has carved wood cover and stand. *Height, 1 foot 2 inches.*

[*Illustrated.*]

127 THREE BLANC-DE-CHINE LIBATION CUPS

Ming Dynasty.

Flaring, gently lobed forms, lightly modeled with sprays of prunus and magnolia. Invested with a beautiful lustrous, warm creamy-white glaze. *Diameter, 3 $\frac{1}{4}$  inches.*

128 SANG-DE-BOEUF KYLIN

Ming Dynasty.

Seated on its haunches, with head raised in the attitude of barking. An interesting mythical figure. Rich glaze of cherry-red of a flambé type; many of the high lights show the gray biscuit. Has carved wood stand. *Height, 9 inches.*

129 TWO CELADON BOWLS

Sung Dynasty.

- a. On short foot. Invested with a heavy luminous trickly glaze of sky-blue; large crackle. Has carved wood stand.
- b. On short foot. Invested with a heavy trickly glaze of soft blue which leaves the cream lip exposed; two peach spots appear, one on interior and one on exterior. (Repaired.) *Respective heights, 3 $\frac{3}{8}$  inches and 4 inches.*

130 TWO DECORATED FU-LIONS

K'ang Hsi Period.

Seated on their haunches, each with one fore-paw raised,

one over a brocaded ball, the other holding a cub; rising at their backs are taper holders. On open scroll oblong pedestals. Glazed with rarely beautiful apple-green, yellow and aubergine. *Heights, 7 inches.*

131 ROUND BRUSH HOLDER

Ming Dynasty.

Formed of twelve upright bamboo stems set in a closed base and joined at top. Invested with a lovely creamy lustrous glaze in which is an interesting crackle. Has carved wood stand. *Height, 4½ inches.*

132 LARGE LAVENDER VASE

Ch'ien Lung Period.

Globular, with tall neck, wide trumpet mouth and short spreading foot. Invested with a beautiful mottled lavender glaze in which crimson appears, mostly below the neck, slightly flambé in character. Has carved wood stand. *Height, 14 inches.*

133 SMALL CELADON VASE AND WINE POT

Sung Dynasty.

a. Inverted pear-shape, slender tapering neck, expanding lip. Enriched with moulded band on shoulder, which sustains two ogre-heads in relief; under are two shaped medallions holding lotus sprays. Invested with a translucent glaze of evening-sky blue. Has carved wood stand.

b. Low pot with high neck, scrolled spout handle. Enriched with two bandings of detached animals and symbols in relief. Splash glaze of turquoise-blue, yellow and pinkish-gray. Has carved wood stand. *Respective heights, 6 inches and 4 inches.*

134 QUAIN POTTERY WINE JAR

Sung Dynasty.

TriPLICATE gourd-shape, short foot, wide neck. At each of the four corners three heavy tusk-like spurs are vertically placed; between these spurs are two incised scrolls and a small strap handle. Dense stone ware with traces of yellow glaze. *Height, 9 inches.*

- 135 CHARMING CELADON BOWL  
 Sung Dynasty.  
 On short foot. A fine piece of potting. Incuse enrichment on the interior with lily sprays; on exterior, a series of dainty, slender, radiate leaves. Invested with a brilliant, even glaze of gray-green. Has carved wood stand. *Diameter, 4 $\frac{1}{4}$  inches.*
- 136 DECORATED BUDDHISTIC FIGURE  
 Ming Dynasty.  
 "Bodhidharma," the first Chinese Patriarch. Standing, in pale green robes and mantle of blue, on wave formation. Features left in the biscuit. (Traces of gilding.) (Chipped and one hand missing.) *Height, 11 inches.*
- 137 RARE CELADON TRIPOD  
 Sung Dynasty.  
 Low bowl-shape, incurvate collar, spreading lip, on three stump feet. Over the bowl and continuing down the feet, is the V rib so much admired by the Chinese connoisseur. Invested with a beautiful, clear, blue-gray glaze. (Lip repaired with amalgam.) Has carved wood stand. *Height, 4 $\frac{1}{4}$  inches; width, 5 inches.*
- 138 BUDDHISTIC PORCELAIN FIGURE  
 Ming Dynasty.  
 "Maitreya" the coming Messiah. Seated, with smiling features and protuberant belly exposed, he holds a rosary in his right hand. His robe is invested with pale gray glaze. Features and body left in the gray-white biscuit. (Hands chipped.) *Height, 6 inches.*
- 139 CELADON PLATE  
 Sung Dynasty.  
 Low spreading sides with upcurving rim, short foot. Invested with a delightful, evening-sky-blue glaze, the gray-white biscuit showing on the lip; giant crackle. Has carved wood stand. *Diameter, 6 inches.*
- 140 DECORATED PORCELAIN GROUP  
 K'ang Hsi Period.  
 The bibulous poet, "Li-Tai-Peh" is disturbed from his

reverie by the fall of his huge wine-pot. Enriched with apple-green, rich yellow and aubergine glazes. Has carved wood stand. *Length, 6¾ inches.*

141 LOTUS-LEAF FLOWER HOLDER

K'ang Hsi Period.

In the form of a white cusped leaf veined with apple-green; a trailing spray of flowers in relief, is tied by a ribbon to the side of the leaf. Glazed with apple-green and delicate red. Has carved wood stand. *Length, 6 inches.*

142 GRACEFUL TURQUOISE-BLUE VASE

Ch'ien Lung Period.

Ovoidal body elongated to a slowly incurvate foot; short neck. Decorated with peony and magnolia sprays growing over rocks on which a phoenix appears. In brilliant enamel colors on a turquoise ground which is penciled with black cloud-scrolls. Has carved wood cover and stand. *Height, 9¾ inches.*

143 TWO CELADON BOWLS IN KILN SETS

Sung Dynasty.

Two bowls with their celebrated purple-peach spots, have become glazed fast to their rough terro-cotta sets during the firing in the kiln. *Total diameters, 8½ inches.*

144 LARGE IMPERIAL YELLOW VASE

Ch'ien Lung Period.

Depressed globular, long neck, trumpet mouth and straight foot. Enriched with two Fu-lions amid cloud-scrolls playing with the brocaded ball. In brilliant blue, green, dull crimson and white on a rich yellow ground. Has carved wood stand. *Height, 12 inches.*

SECOND SESSION  
POTTERY AND PORCELAINS  
OF THE  
SUNG, MING AND CH'ING DYNASTIES

Continued  
NUMBERS 145 TO 288

- 145 DECORATED YELLOW VASE  
Ch'ien Lung Period.  
Inverted pear-shape, tapering straight neck, short foot. Incised with group of lotus in aubergine-pink and green; warm yellow ground. Has carved wood stand. *Height, 6 $\frac{1}{4}$  inches.*
- 146 BLUE AND WHITE PORCELAIN VASE  
Ch'ien Lung Period.  
Oviform, high spreading foot, long incurvate neck and trumpet lip. Decorated in cobalt-blue with macaw perched on a tree which rises from wave-forms. Has carved wood stand. *Height, 8 $\frac{1}{2}$  inches.*
- 147 DECORATED PORCELAIN JARDINIÈRE  
Yung Chêng Period.  
Oblong with sloping sides, on four small bracket feet. Enriched with highly conventionalized peonies, blossoms and leaf scrolls, on lip, a small peony scroll; near foot, a conventionalized banding of leaves. Has carved wood stand. *Height, 5 inches; width, 8 inches.*
- 148 CORAL BOTTLE-SHAPE VASE  
Yung Chêng Period.  
Graceful form on short foot. Invested with an even, slightly pitted glaze of warm coral. (Neck crack.) Has carved wood stand. *Height, 7 inches.*
- 149 SMALL MIRROR-BLACK JAR AND BLUE AND WHITE BOX  
Ch'ien Lung Period.  
a. Globular, with small mouth. Invested with a fine reflecting glaze. (Traces of gilding.)

b. Rouge box. Circular, with straight sides. Cover decorated in rich cobalt-blue with ju-i scroll medallion and band of animalistic scrolls. Has carved wood stand.

150 TWO TURQUOISE-BLUE JARDINIÈRES

Tao Kuang Period.

Quadrilateral, outspreading sides terminating in flanged rims, supported on four small, shaped feet. Invested with a heavy trickling glaze in which crackling appears. Have carved wood stands. *Height, 5 $\frac{3}{4}$  inches; width, 7 $\frac{3}{4}$  inches.*

151 CELADON VASE

Sung Dynasty.

Bulbous, with sloping shoulders, tubular neck, slightly expanding rimmed lip, and short straight foot. Invested with an even glaze of dense warm dark gray. (Imperfect.) Has carved wood stand. *Height, 6 inches.*

152 IMPERIAL DECORATED PLAQUE

Tao Kuang Period.

Deep cavetto. Centre decorated in five colors with "Water Festival." Two junks are racing towards the shore, one simulates a dragon-monster, the other a "Feng-huang" with a dragon-body; on the shore are spectators. Ju-i border in gilding. Exterior decorated in colors with trophies holding the "Pa Pao" symbols of the "Eight Precious Objects." Imperial mark of period. Has carved wood stand. *Diameter, 11 $\frac{1}{4}$  inches.*

153 DECORATED BOWL

Yung Chêng Period.

So called soft paste. Ovoidal, with wide open throat. A ju-i band at neck and a leaf band at foot in rich, soft red. Decorated in five colors with a pleasant, wooded landscape holding groups of figures, literary gentlemen reading their scrolls, philosophers playing chess, a painter and a musician. (Repaired.) Has carved wood stand. *Diameter, 5 $\frac{1}{2}$  inches.*



154 DECORATED PORCELAIN VASE

Yung Chêng Period.

Ovoid, with moulded neck, spreading foot. Enriched with landscape and figures in five colors, "Shou-Lao, the God of Longevity" and two youthful attendants, one is carrying flowers as a gift to "Tao-Yuan-Ming" noted for his love of flowers, who approaches them with an empty basket. Has carved wood cover and stand. *Height, 10¼ inches.*

155 PORCELAIN ANIMAL STATUETTE

Yung Chêng Period.

Red-crested stork standing and resting on a rock; a quaintly modeled figure, left in the gray-white biscuit, except slight glazing of poll, bill, feet and eyes. *Height, 10 inches.*

156 TWO BLUE AND WHITE PORCELAIN JARS

Yung Chêng Period.

Fine ovoid forms with small straight collar, enriched with two wonderful "Feng Huangs" with outstretched wings, their long tails floating among cloud scrolls. Scroll band on shoulder, wave and rock band near foot. Rich cobalt-blue on white ground. Has carved wood cover and stand. *Height, 7 inches.*

157 CHARMING CELADON VASE

Yung Chêng Period.

Inverted pear-shape with short, wide incurvate neck and square lip. Decorated in slight relief with a deer under a fir-tree, and two flying bats "Longevity and Happiness." The various objects are painted in brown and gray in reserve on background of fine, even, greenish-gray celadon glaze. Has carved wood stand. *Height, 12½ inches.*

158 TWO ROSE-DU-BARRY JARDINIÈRES

Yung Chêng Period.

Oblong, with tapering sides, rounded and indented corners, on small shaped feet. Invested with a rare, even, translucent, rose-du-Barry glaze. Have carved wood stands. *Height, 5½ inches; length, 9¼ inches.*

159 LOW CELADON BOWL

Sung Dynasty.

Wide flaring sides, on short foot. The interior enriched with two lightly incised fish swimming amongst water-scrolls. Delightful evening-sky blue glaze on interior and exterior, in which a pink flush occurs and a rare long radiating crackle. *Diameter, 6½ inches.*

160 FOUR SMALL IMPERIAL FUKIEN DISHES

Yung Chêng Period.

Dainty eggshell porcelain. Six-lobed, flaring sides enriched with lightly incised lotus; the centre holds a coiled, five-clawed dragon and border of T-fret. Invested with a lustrous rich white glaze. Imperial impressed seal on foot. *Diameter, 3⅛ inches.*

161 STARCH-BLUE BOTTLE-SHAPE VASE

Ch'ien Lung Period.

Flattened, inverted pear-shape, tubular neck, rounded lip and spreading foot. Two scroll handles on neck. Invested with an even glaze of lustrous starch-blue. Has carved wood stand. *Height, 7¾ inches.*

162 TALL CELADON VASE

Ming Dynasty.

Inverted club-shape, with small neck and slightly spreading lip. Incuse decoration of flower sprays. Invested with a pale blue-green glaze in which a vertical crackle has developed. Has carved wood stand. *Height, 13½ inches.*

163 POWDER-BLUE VASE

Ch'ien Lung Period.

Inverted pear-shape, with long neck, trumpet lip and straight foot. Invested with a brilliant glaze of Mazarin-blue. Has carved wood stand. *Height, 9 inches.*

164 TWO INTERESTING BRUSH HOLDERS

Ch'ien Lung Period.

a. Plain tubular shape invested with an even glaze of brilliant apple-green.

b. Tubular, modeled openwork with growing bamboo and flowers in various enamel colors. Have carved wood stands. *Respective heights, 4 inches and 3¾ inches.*

- 165 SANG-DE-BOEUF BOTTLE-SHAPE VASE  
Ch'ien Lung Period.  
Globular, with long, slightly expanding neck. Invested with a lustrous crimson glaze, somewhat flambé below the lip. The gray biscuit is exposed at the mouth. Has carved wood stand. *Height, 9 inches.*
- 166 BLUE AND WHITE PORCELAIN GINGER JAR  
Ming Dynasty.  
Ovoid, with short collar. Decorated in cobalt-blue with the Eight Taoist Immortals walking, with their attributes, on wave-forms, a curious, descending, cloud-like dragon-scroll separating each figure. Ju-i bands at shoulder and foot. Mark of period on foot. Has carved wood cover and stand. *Height, 6½ inches.*
- 167 SMALL ROUND JARDINIÈRE  
Ch'ien Lung.  
Inverted bell-shape on three short feet. Invested with an even glaze of apple-green in which a minute crackle of regular character appears. Has carved wood stand. *Diameter, 6½ inches.*
- 168 BROWN AND WHITE JARDINIÈRE  
Ming Dynasty.  
Circular, with lip rounded, and rib dividing body into two unequal panels; three ju-i feet. Decorated in white reserve slightly modeled, on brilliant brown glaze. The upper panel and rim hold many symbols and growing flowers; in the lower panel are two weird dragons seeking the sacred pearl of power. *Diameter, 6¼ inches.*
- 169 DECORATED PORCELAIN VASE  
Ming Dynasty.  
Inverted pear-shape with wide, outcurving foot, small collar. Decorated with landscape and figures, a Mandarin and two attendants. In blue, apple-green, yellow, crimson and aubergine, on a dense white ground. Has carved wood stand. *Height, 7 inches.*

170 BLUE AND WHITE PORCELAIN VASE

Ming Dynasty.

Double-lobed, flattened body, outcurving foot, incurvate neck holding two dragon-head and loop handles. Decorated in cobalt-blue with animalistic bands and panels, geometric bandings at foot, shoulder and neck. Luminous white glaze. (Handle chipped.) Has carved wood stand. *Height, 6½ inches.*

171 CELADON VASE

Ming Dynasty.

Club-shape, with two animalistic head handles. Enriched with sprays of flowers lightly modeled in the biscuit. Invested with a delightful pale green glaze in which is a large crackle. Has carved wood stand. *Height, 8 inches.*

172 INTERESTING DOUBLE-COMPARTMENT BOWL.

Ming Dynasty.

Evidently used for a hot-water dish. Under the foot is a communicating perforation. Exterior decorated in penciled red flowers in reserve on apple-green. Interior, "Mu Wang" riding horseback among cloud-forms; floral and diapered zig-zag border. Has carved wood stand. *Diameter, 5 inches.*

173 BLANC-DE-CHINE FIGURE

Ming Dynasty.

"Kuan Yin," the Goddess of Mercy. Seated, with one knee under her, the other raised and supporting her two hands. High cowed head-dress and voluminous robes. Invested with beautiful cream-white glaze of even quality. *Height, 7½ inches.*

174 TWO SMALL VASES

Ming Dynasty.

a. Long, wide-necked bottle-shape. Invested with warm cream glaze in which a fine cafe-au-lait crackle has developed on neck and foot.

b. Slender gourd-shape, with dragon modeled in relief on neck. Have carved wood stands. *Respective heights, 7½ inches and 6 inches.*

175 DECORATED POTTERY FIGURE

Ming Dynasty.

“Kuan Yin,” the Goddess of Mercy, is seated on a rustic base, left leg crossed over right knee and supporting an infant which she holds in her hands. Crowled head-dress and long robes in two tones of turquoise-blue. The various features have been gilded; richly glazed with aubergine and yellow at base. *Height, 12½ inches.*

176 LARGE BLUE AND WHITE PORCELAIN JARDINIÈRE

Yung Chên Period.

Elongated hexagonal, slightly flaring body with wide flanged rim, canted base set on a spreading foot with a substantial filet. The panels of the body depict a hilly and wooded country in which roam many herds of deer, and under is a brocaded, shaped ground interrupted at intervals with Shou medallions. The foot is diapered and holds small, reserve panels of landscapes. Lip brocaded with swastika-fret and inset Shou medallion. (Rim chipped.) Rich cobalt-blue on fine white ground. Has carved wood stand. *Height, 13½ inches; width, 1 foot 10¼ inches.*

177 TALL CELADON VASE

Ming Dynasty.

Spindle-shape. The body lightly modeled with spiral diapers holding cloud scrolls. Lustrous glaze of pale green in which a vertical crackle has developed. *Height, 11½ inches.*

178 TWO DECORATED FU-LIONS

Ch'ien Lung Period.

Resting on their haunches, each with one paw raised and resting on a brocaded ball, carved in wood; modeling of a scrolled archaic type. Invested with lustrous glazes of apple-green, golden-yellow, brilliant blue and a pinkish aubergine. The wagging tails are of bronze. Have carved wood stands. *Height, 8 inches; length, 10½ inches.*

179 TALL BLUE AND WHITE PORCELAIN VASE

Ming Dynasty.

Inverted pear-shape, short, straight collar and bell foot. The band on shoulder is enriched with ju-i panels holding flower sprays; in the intervals are imbricated scales with half-rosettes in reserve; under, a continuous landscape with birds, trees and rocks. The foot holds many pointed rocks rising from water-forms. Has carved wood stand. *Height, 13½ inches.*

180 DECORATED JAR

Ming Dynasty.

Ovoid, with wide throat and short incurvate neck. Decorated with four panels, "A Court Beauty and her Attendants," "Five Statesmen," interrupted by two floral panels. Ju-i band on neck. The glazes of rich apple-green, red, aubergine and yellow, are fascinatingly arranged. Has carved wood stand. *Height, 6 inches.*

181 CELADON VASE

Ming Dynasty.

Ovoidal, with high, incurvate foot and neck, and sloping moulded shoulder. Incuse decoration of sprays of flowers. Invested with a lustrous glaze of sea-green. Lip cut and has bronze rim. Has carved wood stand. *Height, 11 inches.*

SNUFF BOTTLES IN AMBER, JADE, PORCELAIN, AGATE AND ROCK CRYSTAL

182 TWO SNUFF BOTTLES

Ch'ien Lung Period.

- a. Flask shaped, cameo cut with sacred horse under a fir tree, in curious rusty cream mottled agate on a delightful, smoky fawn ground. Chased and gilt stopper.
- b. Flattened ovoid, carved with pond-lily leaves in varying amethyst rock crystal. Green jade stopper.

183 TWO BLUE AND WHITE SNUFF BOTTLES

Yung Chêng Period.

Tall, slightly tapering and tubular, with small short necks,

one decorated with a "Seance of literary men and scholars" and the other with "The Eight Sacred Horses of Mu-Wang." (No stoppers.) Have carved wood stands.

184 TWO AGATE SNUFF BOTTLES

Ch'ien Lung Period.

Flask shape, cameo cut, one with emblematic symbols, the other, boy with three-legged toad; a natural vein of rusty brown has served for the figures, backgrounds of pinkish gray. Chased and gilded stoppers.

185 TWO SNUFF BOTTLES

Ch'ien Lung Period.

a. Amber, ovoid on small foot, carved with Tao-t'ieh ogre heads and rings at shoulders; deep, golden tone. Crystal and jade stopper.

b. Glass, plain pilgrim-bottle shape; creamy white. Crystal and jade stopper.

186 TWO PORCELAIN SNUFF BOTTLES

Kea King Period.

a. Tall, flat ovoid form, modeled in high relief with three-clawed dragon and flying phoenix on cloud forms; invested with a deep coral glaze. Green jade stopper.

b. Flask shape, of clear, transparent rock crystal. Chased and gilded bronze stopper.

187 TWO RARE PORCELAIN SNUFF BOTTLES

Kea King Period.

a. Flat ovoid form, interestingly modeled and undercut "Kylins playing in the clouds." Invested with a deep, rich royal-blue. Green jade stopper.

b. Modeled in relief, "Happy travelers, some are waiting and some are being taken across the Styx to the Taoist Paradise"; in rich five-colored enamels. Chased and gilded bronze stopper. Has silk covered box.

188 ENAMELED VINAIGRETTE AND PORCELAIN SNUFF BOTTLE

Kea King Period.

a. Vinaigrette, heart shaped, with interesting decoration

- of two "Pastoral Scenes" after Watteau. Chased and gilded cover. Has silk covered box.
- b. Flattened ovoid, modeled with figures in landscape "Happy travelers to the Taoist Paradise," in five-color enamels on creamy-white ground. Mark of the period on foot. Has silk box.

189 TWO PORCELAIN SNUFF BOTTLES

Kea King Period.

Flat ovoid, modeled with many figures in landscapes "Happy Travelers to Paradise" in five-colored enamels on creamy-white grounds. Chased and gilded stoppers. Marks of the period on feet. Fitted in silk covered boxes.

190 RARE JADE SNUFF BOTTLE

Ch'ien Lung Period.

Flask shape, delicately incised with an emblematic rock and the owner's name. Fine mutton-fat white jade of exquisite quality. Rose crystal stopper. Has silk covered box.

191 JADE SNUFF BOTTLE

Ch'ien Lung Period.

Flat, tapering ovoid, delicately carved with fir tree, rocks and prunus in blossom. Fei-ts'ui mossy veinings run through the white. Chased and gilded stopper. Has silk covered box.

192 PORCELAIN SNUFF BOTTLE

Kea King Period.

Tall, flattened ovoid, modeled and undercut with coiled dragon and flying phoenix in cloud forms. Stopper in the form of a flower. Invested with a charming, even turquoise-blue glaze. (Slightly chipped.) Has silk covered box.

## VELVET AND BROCADE PANELS AND TEMPLE HANGINGS

193 BROCADE PANEL

Ch'ien Lung Period.

A riot of geometric medallions in various sizes, shapes



and colors, are evenly placed on a green ground. *Length, 2 yards 5 inches; width, 30 inches.*

194 BROCADE PANEL

Ch'ien Lung Panel.

Round butterfly medallions and detached blossoms are placed at regular intervals on a fret ground of grass-green and deep blue, the medallions alternate in colorings of red, blue, brown and pink. *Length, 1 yard 30 inches; width, 29 inches.*

195 LONG BROCADE FLOUNCE

Ch'ien Lung Period.

Sprays of peonies, chrysanthemums, bamboo and peaches are woven in dainty pinks, ivory and dark black-green, on soft blue key-fret patterned background. *Length, 5 yards; width, 13 inches.*

196 TWO BROCADE COVERS

Ch'ien Lung Period.

Centres of floral sprays on crimson ground, borders of flowers and emblematic figures on soft green ground. *Sizes, 32 x 25 inches.*

197 TWO BROCADE CUSHION COVERS

K'ang Hsi Period.

The centres of beautiful conventionalized flower scrolls in various soft, rich colors, with cloud-scrolls and symbols in the intervals, on deep cream, satin ground. Borders of deep blue satin enriched with golden butterflies. *33 inches x 24 inches.*

198 BEAUTIFUL BROCADE PANEL

K'ang Hsi Period.

Various square and rounded floral medallions are alternately set in rows and superimposed on alternating diapers of floral sprays and key-fret patterns. Charming coloring of soft pinks, lavender, greens, blues and yellows, on an imperial yellow background. (To be sold as it is.) *Length, 3 yards 33 inches; width, 28 inches.*

- 199 LONG BROCADE PANEL  
Ch'ien Lung Period.  
A geometric lattice holds round and square floral medallions and various diapered grounds in soft crimson, green, pink and gold threads. The sun has reduced the color from a bright to a soft crimson on one side. *Length, 6 $\frac{3}{4}$  yards; width, 28 inches.*
- 200 BROCADE PANEL  
Ch'ien Lung Period.  
Scrolled medallions holding conventionalized floral bouquets are interrupted by small geometric oval medallions. In rich pinks, crimson, green and blues, on a cloth-of-gold ground. *Length, 1 yard 31 inches; width, 33 $\frac{1}{2}$  inches.*
- 201 BROCADE PANEL  
Ch'ien Lung Period.  
Enriched in alternating series, with detached symbols of "Pa Chi-Hsiang" the Eight Buddhistic Emblems of Happy Augury, in varied colors on dark blue key-fret ground. *Length, 3 yards; width, 28 inches.*
- 202 LARGE BROCADE PANEL  
Ch'ien Lung Period.  
Chrysanthemum sprays, butterflies and cloud-forms, in pinks, green, blue, and gold threads, are regularly placed on a brilliant crimson satin ground. *Length, 4 $\frac{1}{2}$  yards; width, 28 inches.*
- 203 LONG BROCADE PANEL  
K'ang Hsi Period.  
Sprays of chrysanthemums and peonies alternate, in the intervals are cloud-forms and bamboo sprays in soft colors on a background of imperial yellow. The sun and time have given a straw shade to the exposed portions. *Length, 3 $\frac{3}{4}$  yards; width, 28 inches.*
- 204 BROCADE PANEL  
Ch'ien Lung Period.  
Blossoms in various colors are set in a geometric trellis enriched with gold threads; brilliant crimson, satin ground. *Length, 4 yards 8 inches; width, 28 inches.*

- 205 LONG BROCADE PANEL  
Ch'ien Lung Period.  
Dainty circular medallions holding peony blossoms and lilies in pale blue, crimson, pink, greens and yellows, are evenly placed on an all-over key-fret of yellow and dark blue, with bats flying in the intervals; grass-green satin ground. *Length, 6 yards; width, 28 inches.*
- 206 THREE SMALL BROCADE COVERS  
Ch'ien Lung Period.  
Centres of dark blue enriched with flowers and symbols in colors. Imperial yellow floral borders. *Size, 33 inches x 26 inches.*
- 207 TWO SMALL BROCADE COVERS  
Ch'ien Lung Period.  
Centres of floral sprays and emblems, on crimson grounds. Green floral borders. *31 inches x 24 inches.*
- 208 TWO SMALL BROCADE COVERS  
Ch'ien Lung Period.  
a. Dragon medallion and cloud-forms on green; crimson border. *33 x 27 inches.*  
b. Yellow centre, crimson border. *32 x 27 inches.*
- 209 LARGE BROCADE TEMPLE HANGING  
Ch'ien Lung.  
Detached sprays of flowers, and emblems, in soft pinks, greens and ivory on a fret ground of imperial yellow. Trimmed with beautiful blue and white emblematic black satin galloon two horizontal panels. *Length, 3 yards 24 inches; height, 1 yard 2 inches.*
- 210 LARGE VELVET PANEL  
Ch'ien Lung Period.  
Brilliant, lustrous red velvet woven in gold threads with five vertical series of the Shou character in different forms. (Longevity symbols.) *Height, 3 yards 32 inches; width, 1 yard 2 inches.*
- 211 LONG BROCADE FLOUNCE  
Ch'ien Lung Period.  
Charming sprays of peonies, chrysanthemums, fungi and

prunus in colors on a key-fret ground of light and dark blue. (In nine pieces.) *Length 7 yards 25 inches; width, 14 inches.*

212 BROCADE PANEL

Ch'ien Lung Period.

Upper portion of floral medallions on imperial yellow ground, finished at bottom with blue-embroidered black satin band, under is a panel of geometric medallions; on pale blue ground. *Height, 2 yards 11 inches; width, 1 yard 15 inches.*

213 BROCADE PANEL

K'ang Hsi Period.

Finely drawn and conventionalized lotus blossoms in pink, ivory and green, among leaf scrolls evenly placed on a key-fret patterned ground of imperial yellow. (Portions faded.) *Length, 1½ yards; width, 28 inches.*

214 BROCADE PANEL

Ch'ien Lung Period, in the Louis Seize manner.

Charming sprays of flowers in dainty coloring woven on a pale blue satin ground. (In four pieces.) *Length, 1 yard 29 inches; width, 1 yard 17 inches.*

215 TWO BROCADE CUSHION COVERS

K'ang Hsi Period.

Centres of apple-green satin woven with four-clawed dragons seeking the sacred pearl of power amid cloud-scrolls; in rich colors and gold threads. Border of old orange with similar motives. *33 inches x 24 inches.*

216 BEAUTIFUL BROCADE PANEL

K'ang Hsi Period.

Various square and rounded floral medallions are alternately set in rows and superimposed on alternating diapers of floral sprays and key-fret patterns. Charming coloring of soft pinks, lavender, greens, blues and yellows; a subtle flush of old pink melts over the panel. *Length, 3 yards; width, 1 yard and 5½ inches.*

217 RARE BROCADE TABLE COVER

K'ang Hsi Period.

Sprays of chrysanthemums in blues, reds and yellow with dark green leaves, are regularly placed on a diapered ground holding a key-fret pattern in gold threads and soft apple-green; black satin border. *2 yards 21 inches x 1 yard 9 inches.*

218 BEAUTIFUL BROCADE PANEL

K'ang Hsi Period.

Various square and rounded floral medallions are alternately set in rows and superimposed on alternating diapers of floral sprays and key-fret patterns. Charming coloring of soft pinks, lavender, greens, blues and yellows; a subtle flush of old pink melts over the panel. *Length, 2 yards; width, 1 yard 4 inches.*

219 LARGE BROCADE PANEL

K'ang Hsi Period.

Dainty sprays of flowers in pinks, yellows and blue, on a small-diapered green background. Faded on one side to almost straw yellow. *Length, 6 yards; width, 28 inches.*

220 BEAUTIFUL BROCADE PANEL

K'ang Hsi Period.

Various square and rounded floral medallions are alternately set in rows and superimposed on alternating diapers of floral sprays and key-fret patterns. Charming coloring of soft pinks, lavender, greens, blues and yellows; a subtle flush of old pink melts over the panel. *Length, 1 yard 28 inches; width, 1 yard and 20 inches.*

## CANTON AND CLOISONNÉ ENAMELS

221 CANTON ENAMEL VASE

Ch'ien Lung Period.

Graceful, rounded, tapering body, incurvate neck and foot, flat at back for suspension. Enriched with reserved landscape panel in which are three sheep. Rose-du-Barry background relieved with flower and fruit sprays. (Slightly chipped.) Fitted in carved wood stand. *Height, 8½ inches.*

222 CANTON ENAMEL PLATE

Ch'ien Lung Period.

Deep plate with wide flange, the centre occupied by a rocky and mountainous landscape, a river and a bridge in the foreground, and pagoda and temple amongst towering rocks in the middle distance. Border of clusters of grapes, vines, fir branches and bamboo. Painted in pink "camaieu" somewhat in the European manner. Has carved wood stand. *Diameter, 9½ inches.*

223 INTERESTING CANTON ENAMEL FLOWER  
HOLDER

Ch'ien Lung Period.

In the Louis Quatorze manner. Tapering and flattened tube enriched with reserve panels variously holding flower bouquets, birds and fruit, and bust of a young lady in Watteau costume. Ground of royal-blue relieved with richly gilded scrolls. Mounted with gilded bronze foot and rim. Ring for suspension at lip. *Height, 8¼ inches.*

224 CANTON ENAMEL PLATE

Ch'ien Lung Period.

Plain bowl-shape on short foot. Interior enriched with figures in rocky landscape, in five colors on creamy-white ground, "A Taoist Immortal and his disciples." Small border of scrolls in black and gold. Exterior beautifully decorated with "Bat of Happiness" amongst fine lotus sprays, in colors on light mustard yellow. Has carved wood stand. *Diameter, 8¼ inches.*

225 CANTON ENAMEL TRAY, SIX SWEETMEAT  
DISHERS WITH SPOONS AND SIX CUPS AND  
SAUCERS

Ch'ien Lung Period.

Oblong tray with canted corners and slightly expanding rim, on short feet. Depicting in the centre in five-enamel colors on white ground, "Revels of the Eight Taoist Immortals." Exterior and interior border of black and gold scrolls (chipped at one corner). Six dainty lobed dishes enriched in centres with floral sprays in brilliant harmonious colors on pale lavender ground, black and gold scroll

borders; boat-shaped spoons with scroll handles terminating in rooster's heads, decorated to match dishes. Cups and saucers, rectangular with indented corners. Decorated in same manner as sweetmeat dishes. *Size of tray, 8 inches x 11½ inches.*

226 TWO CANTON ENAMEL BOWLS AND COVERS

Ch'ien Lung Period.

Inverted bell shape with dome covers. One decorated in black and gold with dragons and small scrolls on soft, pale blue, its interior with swimming fish in colors on white ground. The other with green dragons floating amongst blue cloud forms on crimson ground, interior with peaches in color. Have carved wood stands. *Respective heights, 3½ inches and 3¾ inches.*

227 CANTON ENAMEL TRAY AND TEA CADDY

Ch'ien Lung Period.

Oblong tray with rounded, indented corners. Beautifully enriched in five-color enamels on white ground. Centre depicts "The Nine Wise Old Men of China." "Shou Lao, the God of Longevity," is standing and taking a branch of chrysanthemum blossoms from a jar which Tao-Yuan-Ming (noted for his love of flowers), has before him on a large table which is set in a pleasant landscape. The remaining figures are in various groups nearby, mostly in animated conversation. Borders of black and gold scrolls and blue T-fret pattern. Hexagonal caddy with loose cover and paneled decoration of landscapes in similar colors. *Tray, 12 x 8 inches; Caddy, height, 6¼ inches.*

228 TWO BEAUTIFUL CANTON ENAMEL BOWLS

Ch'ien Lung Period.

- a. Square, with flaring side and canted corners, top rim gilded. Enameled in harmonious colors with the "Pa Chi-hsiang," Eight Buddhistic Emblems of Happy Augury, finely arranged as trophies in each panel, on a rare apple-green ground; interior pink.
- b. Similar, with rounded corners, panels enriched with flowers, butterflies and fruit on lovely mottled lavender ground; interior pale sky-blue. Have carved wood stands. *Diameters, 6¾ inches.*

229 TWO CLOISONNÉ ENAMEL JARDINIÈRES

Ch'ien Lung Period.

Oblong, with indented corners; inverted bell-shape supported on four ju-i feet; finely flanged rim. Enriched on bodies, rims and under feet with charming lotus scrolls in rich harmonious colors on turquoise-blue ground. *Height, 4 $\frac{1}{4}$  inches; length, 10 $\frac{1}{2}$  inches.*

230 CANTON ENAMEL TRAY AND TEA POT

Ch'ien Lung Period.

Oblong tray, with canted corners and slightly expanding rim, on short feet. Depicting in the centre in five-enamel colors on white ground, "Revels of the Eight Taoist Immortals." Exterior and interior border of black and gold scrolls (chipped at one corner). Teapot, hexagonal, with indented corners, tall tubular handle and loose gilded cover with enamel floral terminal; decorated with continuous landscape holding many figures "The Domestic Pleasures of Country Life." *Tray, 11 $\frac{3}{4}$  x 8 inches; Teapot, height, 7 $\frac{1}{4}$  inches.*

231 TWO RARE CANTON ENAMEL SNUFF JARS AND COVERS

Ch'ien Lung Period.

Expanded pear shapes, with outcurving feet, dome covers with gilded bronze terminals. Daintily decorated with three shaped, reserve panels of flowers; brocaded backgrounds irregularly panelled in green, rose-du-Barry and pale yellow. (Slightly chipped.) Have carved wood stands. *Heights, 2 $\frac{1}{2}$  inches.*

232 SHORT CEREMONIAL BATTLEAXE IN CLOISONNÉ ENAMEL

Ch'ien Lung Period.

Short tapering shaft terminating in two gilded ju-i heads. Near the top a shaped strap holds a crescent blade of brownish-black and white mottled jade. The shaft finely enriched with lotus scrolls in brilliant colors on a deep turquoise ground. Has carved wood stand. *Length, 14 $\frac{1}{2}$  inches.*



233 TWO CLOISSONNE ENAMEL JARDINIERES

Ch'ien Lung Period.

Oblong, with indented corners; inverted bell-shapes supported on ju-i feet; finely flanged rim. Enriched under foot and on four panels with lotus scrolls in brilliant colors on turquoise-blue ground; surrounds of scroll-chased gilded bronze. *Height, 4 inches; length, 10 $\frac{1}{4}$  inches.*

234 TWO CANTON ENAMEL BOWLS AND COVERS

Ch'ien Lung Period.

Inverted bell shaped bowls. Domed covers with sunken central medallions. Deftly enriched with white reserve panels holding various emblems of "The Hundred Antiques" in black and gold; cobalt-blue ground sustaining delicate medallions and lotus floral scrolls in reserve; covers similarly treated. *Diameters, 4 inches.*

235 SIX CANTON ENAMEL DISHES AND VASE

Ch'ien Lung Period.

a. Square dishes with indented corners. Charmingly decorated in five-color enamels on white, with landscapes and streams holding phoenix and mandarin ducks.

b. Vase, ovoidal with long, tapering neck. Enriched with landscapes and figures "The Pleasures of Country Life." Has carved wood stand. *Dishes, 4 inches square; Vase, height, 4 inches.*

236 CANTON ENAMEL TRAY AND TWO TEAPOTS AND COVERS

Ch'ien Lung Period.

Oblong tray with indented corners; five-color enamels on white ground, depicting "The Taoist Paradise" with stream and many figures in the foreground, palaces and the sacred hills beyond; borders of floral scrolls in black and gold and blue T-fret pattern.

Square pots with indented corners, and tall handles somewhat rounded at tops. Panels minutely decorated with blue phoenix-like dragons surrounded by delicate floral scrolls; blue border (slightly chipped.) *Tray, 11 $\frac{3}{4}$  inches x 7 $\frac{3}{4}$  inches; Pots, height, 6 $\frac{3}{4}$  inches.*

237 TWO CLOISONNE ENAMEL TRUMPET VASES

Ch'ien Lung Period.

Slightly bulbous, ridged stems, bell-shaped feet. Enriched with conventionalized lotus scrolls in brilliant colors on deep turquoise-blue ground. *Heights, 7½ inches.*

238 TWELVE CANTON ENAMEL TRAYS AND TWELVE CUPS

Ch'ien Lung Period.

Trays with indented corners. Enriched in black and gold with the various emblems of The Hundred Antiques; scroll borders. Cups, tapering, with indented corners, the panels enriched with landscapes; borders of dainty floral sprays. *Dishes, 4 inches square; Cups, height, 1½ inches.*

239 SIX CLOISONNÉ ENAMEL TRAYS

Ming Dynasty.

Circular, with flat centres and quick-curving sides. Centres hold highly conventionalized lotus-medallions on turquoise-blue grounds; the fields hold pinkish-white imbricated scales. Floral borders on green grounds. Exteriors fully enamelled with flowers on turquoise-blue. (Slight chip.) *Diameters, 4⅞ inches.*

240 CANTON ENAMEL TRAY AND FOUR CUPS AND SAUCERS

Ch'ien Lung Period.

Oblong tray with indented corners. Beautifully enriched in five-color enamels on white ground, with "The Nine Wise Old Men of China," amongst these are "Shou Lao, the God of Longevity" and "Tao-Yuan-Ming" noted for his love of flowers, seated at and variously grouped near a large table set in a pleasant landscape. Border of black and gold scrolls and blue T-fret. Cups, four-lobed with two strap side handles, decorated in colors with varied landscapes and figure panels. Rectangular saucers with indented corners, decorated with dragons and scrolls in black and gold; green fret borders. *Tray, 12 inches x 8 inches.*





CLOISONNE ENAMEL BEAKER

[ NUMBER 245 ]

CLOISONNE ENAMEL FIGURE CANTON ENAMEL WINE POT

[ NUMBER 243 ]

[ NUMBER 244 ]

241 LARGE CLOISONNÉ VASE

Ming Dynasty.

Square section; pear shape, outcurving neck and foot, bronze ogre-head and ring handles. The entire surface enriched with a series of bandings varying in width, in brilliant colors on turquoise and royal-blue grounds. On the foot, black, green, yellow and red running horses are seen rising from wave forms. The principal band on body holds alternately weird dragon-monsters and wonderful flying phoenix, this banding is flanked by two floral bands with royal-blue grounds; below is a cloud-form band and above a monster-head fret band. The neck holds a series of spear-shaped leaves supported by a narrow banding. Has carved wood stand. *Height, 15 inches.*

242 CURIOUS CLOISONNÉ ENAMEL INCENSE BURNER AND COVER

Ming Dynasty.

Oval, divided into three panelled sections. Bulbous body, boat-shaped neck, straight foot and two bronze ogre-head handles with strap loops and depending flanges. The wide panels on each section enriched with T'ao-t'ieh, ogre-head and other animalistic motives. Cover, boat-shaped with perforated medallion in centre from which springs a plain scroll terminal; panels similar to those on body, in brilliant colors and white on turquoise-blue ground. The cover, neck and foot panels are defined by protruding flanges at either end. (Repaired.) Has carved wood stand. *Height, 9 inches.*

243 CANTON ENAMEL WINE POT AND COVER

Ch'ien Lung Period.

Conventional Persian shape, the long scroll spout and handle of gilt bronze, spout terminating in a grotesque warrior and tied at the top with dragon-like scroll. Two raised pear-shape landscape medallions adorn the body and are set on a finely mottled gray ground sustaining marvelous floral scrolls. Two bandings at neck and foot. High dome cover similarly enriched, terminating in a

gilded bronze Fu-lion. (Slight defect on top of cover.)  
*Height, 14½ inches.*

[*Illustrated.*]

244 RARE CLOISONNÉ ENAMEL FIGURE

Ming Dynasty.

“Kuan Ti” the famous God of War, is seated on a low rectangular throne with richly diapered top and ends, the back with a large flower spray. He wears a jewelled tiara. His beard is composed of five tufts (one missing), these adding to his ferocious aspect; he holds one of the tufts in his right hand and his left hand is on his knee. His rich robe held by a jewelled belt, is enhanced with lotus sprays in dark blue, vermilion and white on a turquoise-blue. *Height, 6½ inches.*

[*Illustrated.*]

245 BEAUTIFUL CLOISONNÉ ENAMEL BEAKER

Ch'ien Lung Period.

Square-sectioned, bulbous centre, outcurving neck and foot. The corners and panels of neck and foot are defined by large scrolled ridges in gilded bronze. The body is similarly marked at the corners and richly decorated with coiled dragons among lotus sprays and cloud forms. The neck holds a narrow floral band and a series of spear-shaped panels, above these are fine floral sprays. The foot is enriched in a similar manner to the neck, but reversed. Delightful coloring of brilliant and harmonious reds, dark blue, white and gold on soft turquoise-blue. *Height, 14 inches.*

[*Illustrated.*]

## BRONZE MIRRORS OF THE CH'IN AND T'ANG DYNASTIES

246 EARLY BRONZE MIRROR

T'ang Dynasty.

Circular; large pierced central boss set in an incavo medallion enriched with scalloped, toothed and curious line and circle bandings; wide flange bevelled. Pewter-gray patina with grass-green and rusty-red scales. *Diameter, 7¾ inches.*

247 EARLY BRONZE MIRROR

Ch'in Dynasty.

Sunken centre with pierced boss surrounded by four fowl alternating with small sprays of flowers. Rim formed of eight-pointed lobes, each holding a floral spray. Fine black patina. *Diameter, 4 inches.*

248 RARE BRONZE MIRROR

Ch'in Dynasty.

Circular; concave face, incavo back with deep plain rim. Central pierced rosetted boss surrounded by handsome clusters of grapes and leaves and a plain banding, outer scroll band and moulded edge. Rich ebony patina. *Diameter, 3<sup>5</sup>/<sub>8</sub> inches.*

249 EARLY BRONZE MIRROR

T'ang Dynasty.

Circular, slightly convex face; back enriched with large pierced central boss set in incavo medallion holding geometric strap work; the intervals hold circular seals and animalistic forms in raised outline, and about this is a running ideograph finished with a band of angular tooth-ing; an outer band holds very fine incuse scrolls, animals and birds. Pellucid black patina with areas of malachite green scales. *Diameter, 5 inches.*

250 EARLY BRONZE MIRROR

T'ang Dynasty.

Circular, with bold lobings on the rim and lion-head pierced central boss. The field holds a freely drawn, floral scroll arabesque in which animalistic forms appear. Un-usual patina of malachite-green and rust-red with notes of blue. *Diameter, 5<sup>1</sup>/<sub>4</sub> inches.*

251 EARLY BRONZE MIRROR

T'ang Dynasty.

Circular, slightly convex face; back enriched with large, pierced, central boss set in an incavo medallion holding geometric bandings amongst which are animalistic forms in raised outline, and eight small studdings, finished by a toothed rim; the outer band of incuse scrolls. Black patina with green scales and encrustations. *Diameter, 4<sup>5</sup>/<sub>8</sub> inches.*

252 EARLY BRONZE MIRROR

Ch'in Dynasty.

Circular, with semi-circular, lobed rim and sunken border holding alternately butterflies and sprays of flowers. The pierced central boss is set in an incavo medallion holding two wonderful phoenix alternating with sprays of poppies. Pewter-gray patina with green scales. *Diameter, 5 inches.*

253 EARLY BRONZE MIRROR

T'ang Dynasty.

Circular; central pierced and rosetted boss set in an incavo medallion holding a square on whose rim is an ideograph and small bosses; outside are other and larger bosses and animalistic forms finished by another ideograph and a toothed rim. The outer flange holds a zig-zig band supported by two dentated bandings. Curious patina of rust-color and milky-green. The patina of the face suggests a ruddy stormy sunset. *Diameter, 6½ inches.*

254 EARLY BRONZE MIRROR

T'ang Dynasty.

Circular; pierced and rosetted central boss set in an incavo medallion holding bands of geometric motives; plain wide insloping flange. Blackish-red patina with the silver of the body peering through. Convex face of lustrous pink, red and brown; surrounding a pool of silver. *Diameter, 6¼ inches.*

255 EARLY BRONZE MIRROR

Ch'in Dynasty.

Circular, with plain round rim. Central pierced boss surrounded by foliated rosette, the interval is occupied by two running monsters, winged horse and Fu-lion alternately placed between two highly conventionalized phoenix in low relief. Dense, polished black patina with green scale areas. The face similar but showing deep erosions of a beautiful crystalline tone. *Diameter, 6¾ inches.*



256 RARE BRONZE MIRROR

T'ang Dynasty.

Circular; large central pierced boss set in an incavo medallion in which geometric motives, two series of bosses, animalistic forms and two correlated ideographs appear; toothed rim. The wide flange border sustains an elaborate pattern of animalistic scrolls. Patina of black, browns and green. The convex face of brilliantly mottled emerald-green. *Diameter, 8½ inches.*

257 EARLY BRONZE MIRROR

T'ang Dynasty.

Circular; rosetted and pierced central boss set in an incavo medallion studded with bosses and enriched with major animalistic scroll band and three angular toothed bandings; the wide flange border holds a sunken zig-zag and pearl band. Dull pewter-gray, black and green patina. Convex face of pearl-gray and black with red rust areas. *Diameter, 5 inches.*

258 EARLY BRONZE MIRROR

T'ang Dynasty.

Circular; pierced central boss set in an incavo medallion with central square at the corners of which are bosses; surrounding scroll of animalistic motives about which is an ideographic band and a toothed rim; wide flange border of archaic scroll forms. Patina of black, green and yellow. Convex face heavily scaled with green cloud-like forms over an underglow of pale silvery-golden tone. *Diameter, 5¼ inches.*

259 EARLY BRONZE MIRROR

Ch'in Dynasty.

Circular, convex face, deep-set back with bevelled rim; pierced central boss surrounded by bands of pearls, animalistic motives and bosses, flutes, chevrons, and scrolls. Rich black patina with slight earth encrustations. *Diameter, 4 inches.*

260 UNUSUAL EARLY BRONZE MIRROR

T'ang Dynasty.

Circular; pierced central boss set in a plain field, finished with small semi-circular rim. Heavily scaled with

malachite-green in which rose tones occur, and on the face an area of the dull silver. *Diameter, 8 $\frac{1}{4}$  inches.*

261 EARLY BRONZE MIRROR

T'ang Dynasty.

Circular; pierced central boss set in an incavo medallion enriched by bandings holding toothed rims, an ideograph, scallops and animalistic forms; wide flange with incuse scrolls and inner dentated edge. Pewter-gray patina with rose-red and green scales. *Diameter, 6 $\frac{1}{2}$  inches.*

262 THREE EARLY BRONZE MIRRORS

T'ang Dynasty.

a. Circular; pierced central boss set in an incavo medallion enriched by bandings holding toothed rims, an ideograph and scallops; wide flange with incuse scrolls and inner dentated edge. Pewter-gray patina with rose-red and green scales. *Diameter, 4 $\frac{5}{8}$  inches.*

b. Circular; pierced central boss set in an incavo medallion enriched by bandings holding toothed rims and an animalistic band; plain wide flange. Scaled with rich malachite-green. *Diameter, 3 $\frac{5}{8}$  inches.*

c. Circular; pierced central boss set in an incavo medallion enriched with very interesting scrolled arabesque; flange with two dentated bands. *Diameter, 4 $\frac{3}{4}$  inches.*

263 LARGE EARLY BRONZE MIRROR

T'ang Dynasty.

Circular; pierced central boss set in an incavo medallion in which occur two animalistic and bossed bands, an ideographic band and three others of tothing; wide flange with incuse band of animalistic scrolling. Fine pearl-gray and black patina with heavily scaled areas of green and rose-red. *Diameter, 7 $\frac{1}{2}$  inches.*

264 RARE BRONZE MIRROR

Ch'in Dynasty.

Circular, indented with lobes. Central pierced boss in the form of a tortoise resting on a pond-lily leaf which

rises from water forms; on the left in low relief, is a young lady, seated and working at a small embroidery loom under a group of trees; above in the centre is a square seal and over it the sun setting among cloud forms; on the right is a bold phoenix and two detached trees. A band of strange ideographs completes the composition. A very modern air indeed is in this early work. Dull pewter-like patina with occasional areas of green and brown. *Diameter, 8 $\frac{1}{4}$  inches.*

265 RARE BRONZE MIRROR

T'ang Dynasty.

Circular; large, pierced, central boss set in an incavo medallion which holds a surrounding series of circular rosettes finished on the outer edge with an ornamental moulding; surrounded by a sunken, ideographic band and a further, moulded and scrolled banding. A delightfully composed and well balanced specimen. Deeply encrusted with scales of green and brown with black areas exposing the detail; face of rare rose-red, heavy encrustation. *Diameter, 6 inches.*

266 RARE BRONZE MIRROR

Ch'in Dynasty.

Circular; bevelled scroll and pearl rim. The deep incavo medallion holds a large pierced central boss surrounded by a finely composed, grape-vine arbor holding abundant fruit with many monkey-like animals disporting themselves in the branches; a fine pearl rim marks the inner edge of the outer and narrower incavo which is treated like the centre except that birds are also introduced. Lustrous black patina with lavender-brown in the depths. *Diameter, 7 inches.*

**BRONZE VESSELS, SWORDS AND IMPLEMENTS OF THE CHOU, HAN, WEI, SUNG AND MING DYNASTIES**

267 SMALL BRONZE INCENSE BURNER

Sung Dynasty.

Grotesque form, as a monster with four-clawed legs supported on scrolled branches; the body enriched with ani-

malistic scrolls in which small plaques of gold are inlaid. Cover, modern, carved in wood as the monster's head. Has carved wood stand. *Length, 3 inches.*

268 TWO BRONZE PIKE-BLADES

Chou Dynasty.

Diverging, shaped blades with shafts; four piercings for attachment. The longer with grass-green patina touched with blue; the shorter, rich malachite-green with traces of silver and the oxidized metal appearing. Have carved wood stands. *Respective heights, 10½ inches and 7½ inches.*

269 BRONZE DAGGER AND RING SYMBOL

Chou Dynasty.

Dagger, short, channeled blade with peaked guard; hand-grip flat with rope-like edges holding jeweled animalistic panel; open oval pommel in the form of a wierd jewelled dragon. (One jewel missing.) Rich malachite-green patina with areas of gray and blackish-red. *Length, 12¾ inches.*

Open ring symbol, enriched with incised rope motive flanked by dentate bands. Brown and green patina. *Diameter, 2¼ inches.*

270 IRON STATUETTE

Wei Dynasty.

Standing figure of a High Bonze arrayed in full canonicals and mitre, in the act of ritual worship. Heavy rust markings and encrustations. Has carved wood stand. *Height, 1 foot 4½ inches.*

271 BRONZE PIKE-HEAD

Chou Dynasty.

Two shaped, divergent blades with shaped and pierced shaft; three oblong piercings for attachment. Remarkable, black-green, polished patina with a few small areas of grass-green. Set in walnut box. *Length, 9 inches.*

272 TWO BRONZE ANIMAL FIGURES

Sung Dynasty.

Recumbent Fu-lions, finely conceived; the bodies etched with shaped lines and scrolls, which adds to the strength

of the archaic modelling. Have carved wood stands.  
*Lengths, 3¼ inches.*

273 IMPERIAL BRONZE DRAGON-MONSTER

Sung Dynasty.

The ferocious, five-clawed dragon stands with scrolled and bearded mane, arched back and waving tail, on an open base of cloud forms. Vigorously modeled in the round in chased and gilded bronze. Has carved wood stand.  
*Length, 13¼ inches.*

274 INLAID IRON IMPLEMENT HOLDER

Corean, of the Twelfth Century.

Low drum shape, enriched with a band of round studs at top and base; two rudimentary, monster-head and ring handles interrupt a beautiful lotus scroll of inlaid silver. Top with various deep holes for the reception of many implements. Has carved wood stand. *Diameter, 4¼ inches.*

275 BRONZE AXE-HEAD

Chou Dynasty.

Typical form with circular perforation in blade; long back-piece. Magnificent patina of malachite-green scales. Set in walnut box. *Length, 6¾ inches.*

276 BRONZE SACRIFICIAL VESSEL

Sung Dynasty.

Oblong, with loop handles rising from the flanged rim. High, tubular legs enriched with scroll bands. The body divided into a major and minor band of animalistic scrolls on brocaded key-fret grounds, both bands defined at corners and at centres, with dentated ridges, the decoration evidently a version of an earlier archaic specimen. Has carved wood stand, and cover with jade terminal. *Height, 10¼ inches; width, 8⅓ inches.*

277 RARE BRONZE STUPA

Sung Dynasty.

Shrine, globular body enriched with jewelled interlacing garlands and drops, supporting a diminutive square

panelled, crested shaft with a loose tapering ribbed top surmounted by a circular cresting; stepped base terminating in a circular lotus thalamus. Has been gilded and shows areas of grass-green corrosion. Has red lacquered carved wood stand. *Height, 6½ inches.*

278 THREE SHORT BRONZE SWORDS

Han Dynasty, Graeco-Roman type.

- a. Blade bevelled on both sides, terminating in circular shaft interrupted by two discs. Reddish patina with green scales.
- b. Similar, with tapering flange.
- c. Finely channeled blade with central ribs, tubular shaft terminating in a button flange. Set in a carved and scrolled stand.

*Respective lengths, 1 foot 7 inches; 1 foot 5½ inches; 1 foot 5 inches.*

279 BRONZE LIBATION CUP

Sung Dynasty.

An interesting Chou model. Inverted helmet shape with stump handles rising from the lip, supported on three spear-shaped, out-curving feet. The body enriched with four animalistic scroll panels defined by toothed ridges, and a dragon-head strap handle; over are irregular spear-shaped panels; under the handle is an ideograph. Fine green patina with darker and rust-colored areas. Has carved wood stand. *Height, 7¾ inches.*

280 RARE BRONZE BEAKER

Han Dynasty.

Quadrilateral, inverted pear-shape with outcurving and flanged foot, spreading trumpet neck with square rim. Enriched with two scrolled phoenix-head loop handles and a band of phoenix-monsters on brocaded fret ground in low relief, which supports scrolled spear-shaped panels. The shoulder moulded, the body treated as neck except spear-shaped panels depend. Beautiful patina of chicken-blood red with areas of brown and malachite-green. *Height, 12½ inches.*

281 BRONZE WINE VASE

Han Dynasty.

Quadrilateral, inverted pear-shape, high spreading foot, outcurving neck with bevelled lip. Two T'ao-t'ieh ogre-head and ring handles. Fine patina of rich reddish-brown with mottlings of green. *Height, 9 inches.*

282 INTERESTING BRONZE VESSEL AND COVER

Han Dynasty.

Squat oval bowl-shape with two outstanding ring handles, slightly domed cover with fit over-rim, holding three similar upstanding ring handles triangularly placed. Fine patina of red and rich black from incense fumes. (Abrasion in top.) *Height, 5 $\frac{1}{4}$  inches; width, 7 $\frac{3}{4}$  inches.*

283 BRONZE TRIPOD VESSEL

Han Dynasty.

Bowl-shape, with wide flat lip from which ascend two loop handles; three high round legs. Under lip is a band of scrolled, animalistic motives interrupted by thunder-bolt medallions with depending, scrolled spear-shaped panels holding T'ao-t'ieh ogre features. Has carved wood stand. *Height, 9 $\frac{3}{4}$  inches; width, 8 inches.*

284 RARE BRONZE BOWL

Chou Dynasty.

Globular, wide throat; enriched with a delicate banding of finely incised lines. The thinness of the body is such as is only found in spun or beaten vessels, and the fine finish suggests lathe-work in some form. Heavily encrusted with earthy deposits, a beautiful turquoise-green on the interior and on exterior areas. Has carved wood stand. *Diameter, 7 $\frac{1}{2}$  inches.*

285 RARE BRONZE VESSEL

Chou Dynasty.

Low bowl-shape with high, upright collar, supported by a series of spreading open scrolled feet. The body enriched with a banding of animalistic scrolls holding small bosses at intervals. Rich brown patina. Has carved wood stand. *Diameter, 7 $\frac{1}{2}$  inches.*

286 TWO BRONZE SPEAR-HEADS

Chou Dynasty.

Triangular, with rounded points and long flanges; perforated for attachment. Fine malachite-green patina with pale rust-color areas. Have carved wood stands. *Heights, 8 inches.*

287 TWO BRONZE PIKE-HEADS

Chou Dynasty.

- a. Oblong, holding a large sun boss and a vertical ideograph, terminating in an oval aperture; spiked back. Rare malachite-green patina with red rust-colored areas. *Length, 7 $\frac{1}{4}$  inches.*
- b. Two diverging shaped blades; shaft holds a curious animalistic medallion; four piercings for attachment. Have carved wood stands. *Length, 7 $\frac{1}{4}$  inches.*

288 BRONZE TRIPOD VESSEL

Han Dynasty.

Bowl-shaped, with upstanding flaring rim. A moulded band just below the shoulder from which spring two outstanding loop handles; supported on three high elephant-like feet with t'ao-t'ieh ogre-heads on the hips. Has carved wood stand. *Height, 8 inches; width, 9 $\frac{3}{4}$  inches.*



**THIRD SESSION**  
**CARVING IN JADE, AGATE, IVORY, AMBER**  
**LAPIS LAZULI AND ROCK CRYSTAL**  
**OF THE**  
**CH' IEN LUNG PERIOD**  
**NUMBERS 289 TO 429**

**289 TWO JADE GIRDLE PENDANTS**

Ch'ien Lung Period.

Circular, pierced and carved on both sides with growing bamboo and flowers, amongst which is a phoenix; undulating rims in the form of bamboo stems. Translucent creamy-white jade. Depending from rose crystal drops.

**290 TWO JADE BELT PENDANTS**

Ch'ien Lung Period.

a. Circular, pierced and carved on both sides with growing bamboo and flowers, amongst which is a phoenix. Undulating rim in the form of a bamboo stem. Translucent creamy-white jade, depending from rose crystal drop.

b. Circular, carved with lotus spray and flower, reverse with a series of small spirals, open circular centre. Creamy-white jade, depending from a rose crystal drop.

**291 TWO JADE BELT PENDANTS**

Ch'ien Lung Period.

a. Scrolled cartouche enriched with boy holding a giant peach; reverse a seal. Greenish-white jade depending from rose crystal drop.

b. Enriched with bird perched on branch of prunus, reverse a seal. Beautiful greenish-white jade depending from crystal drop.

**292 TWO RARE AMBER COSTUME PENDANTS**

Ch'ien Lung Period.

a. Carved in the form of a citron. Delightful rich, deep toned amber, green jade drop.

- b. Interestingly carved with a group of Karakos; on reverse a bonze. Deep toned amber, green jade drop.

293 TWO JADE GIRDLE PENDANTS

Ch'ien Lung Period.

- a. Oval, carved with two phoenix and scrolls, reverse with two curious dragon-monsters. Creamy-white jade depending from rose crystal drop.
- b. Two gourds held by open spray of leaves. Opalescent, creamy-white jade depending from coral drop.

294 TWO FEI-TS'UI JADE GIRDLE PENDANTS

Ch'ien Lung Period.

Irregular oblong, pierced and carved on both sides with sprays of ripe peaches, and bats, "Emblems of Happiness." Brilliant apple-green jade depending from rose crystal drops.

295 TWO JADE COSTUME PENDANTS

Ch'ien Lung Period.

- a. Pear-shaped, pierced and carved with phoenix perched in a branch of a fruit tree and helping himself to the fruit; reverse, three mushroom forms. Opalescent creamy-white jade, fine rose crystal drop.
- b. Irregular oval, carved with two Fu-lion amongst water-lily leaves. Lion in green graduating to the creamy-white of the leaves. Rose crystal drop.

296 TWO JADE GIRDLE PENDANTS

Ch'ien Lung Period.

- a. Oblong, pierced and carved on both sides with phoenix perched on a branch of peony tree in blossom. Fine creamy gray-white jade depending from rose crystal drop.
- b. Irregular oblong, enriched with thunder scroll fret and marmol points. Rose crystal drop.

297 TWO JADE BELT PENDANTS

Ch'ien Lung Period.

- a. Oblong, pierced and carved on both sides with phoenix perched on a branch of peony tree in blossom. Fine

creamy gray-white jade depending from rose crystal drop.

- b. Circular, pierced and carved with growing bamboo, rim in form of bamboo stem. Interesting grass-green jade in which touches of violet occur. Rose crystal drop.

### 298 TWO BEAUTIFUL JADE COSTUME PENDANTS

Ch'ien Lung Period.

- a. Tablet form, finely carved on both sides with fir-trees and growing bamboo over rocks. Creamy-white nut-ton-fat jade depending from green jade drop.
- b. Flat cartouche, delicately cut with tree and duck; reverse, peony spray. Creamy-white jade depending from rose crystal drop.

### 299 TWO JADE GIRDLE PENDANTS

Ch'ien Lung Period.

- a. Cartouche, delicately carved in very low relief with "Ho Hsien Ku," one of the Eight Taoist Immortals, carrying her Ju-i Sceptre; reverse, with seal of owner. Creamy-white jade depending from rose crystal drop.
- b. Oval, with small pierced scrolls on sides and base, delicately carved with deer and bat "Symbols of Happy Augury" and seal. Creamy-white jade depending from rose crystal drop.

### 300 TWO JADE BELT PENDANTS

Ch'ien Lung Period.

- a. Serrated oval, with minor piercings, enriched in low relief with fungoid growths and seal; reverse, peaches and pomegranates. Creamy-white jade, sea-green jade drop.
- b. Cartouche, carved with citrons and peaches; reverse, elaborate seal. Creamy gray-white jade, rose crystal drop.

### 301 TWO JADE GIRDLE PENDANTS

Ch'ien Lung Period.

- a. Cartouche, incuse carving of spray of prunus; reverse,

- finely cut seal. Creamy-white mutton-fat jade, rose crystal drop.
- b. Oval cartouche with pierced ornamental scrolls, enriched with growing fir-trees and bamboo; reverse holds a poem. Creamy-white mutton-fat jade, rose crystal drop.
- 302 JADE GIRDLE PENDANT  
Ch'ien Lung Period.  
Cartouche enriched with trophy of "Ju-i Sceptre" and "Everlasting Knot"; reverse a seal; surmounted by two bats flanking a pierced disc (cash). Fine creamy-white jade, rose crystal drop.
- 303 TWO CARVED IVORIES  
Ch'ien Lung Period.  
Chinese citrus known as "the Buddha's hand." Tinted in natural colors, fruit dull yellow, leaves apple-green. Have carved wood stands. *Heights* 5½ inches.
- 304 TWO SMALL AMBER CARVINGS  
Ch'ien Lung Period.  
a. Pendant, carved figure of "Li Tai Peh," the bibulous poet; rich, deep tone.  
b. The Hill of Immortality, "Shou Shan," profusely carved with flowers and emblems. Has carved wood stand.
- 305 BEAUTIFUL JADE TRAY  
Ch'ien Lung Period.  
Tray in the form of a serrated, cusped leaf with a peony spray and gourd trailing over it. White mutton-fat jade of rare texture. Has carved wood stand. *Length*, 4¼ inches.
- 306 TWO MINIATURE JADE TABLE SCREENS  
Ch'ien Lung Period.  
Rectangular medallions of creamy grayish-white jade, pierced and finely carved; one with "Bats of Happiness," lotus spray and fret on both sides, the other conventionalized phoenix on scrolled background. Set in pierced and carved wood frames.

307 MINIATURE JADE TRIPOD AND BOX

Ch'ien Lung Period.

- a. Bowl shape, on tripod legs, carved with T'ao-t'ieh ogre-heads and scrolls; two dragon monster handles with loose rings carved out of solid; cover with scrolls and three loose rings. Mottled green jade. Has carved wood stand.
- b. Serrated oval box; loose cover with floral medallion. Soft greenish-gray jade. Has carved wood stand.

308 CARVED AGATE FIGURE

Ch'ien Lung Period.

Sacred horse in a rising posture; archaic modeling. Interesting rich brown with motlings resembling tortoise-shell. Has carved wood stand. *Length, 4½ inches.*

309 AGATE GROUP

Ch'ien Lung Period.

Boy playfully riding an archaic horse. Smoky gray agate with rust colored markings. Has carved wood stand with silver inlay. *Height, 3 inches.*

310 JADE TRAY

Ch'ien Lung Period.

Boat in the graceful form of a cusped lotus leaf, seated in the centre is the figure of "Bodhidharma." Has carved wood stand. *Length, 5¾ inches.*

311 JADE GROUP

Ch'ien Lung Period.

A curious horned monster supports on his back a graceful vase with scrolled handle. Cloudy creamy-gray jade. Has carved wood stand. *Height, 5 inches.*

312 TWO MINIATURE JADE TABLE SCREENS

Ch'ien Lung Period.

- a. Medallion of carved and pierced, cream-white jade with rich veinings of brilliant green, pond-lilies, bats and flowers.
- b. Medallion of smoky-white jade with "The sacred horse under fir trees." Have carved wood stands.

- 313 JADE BOWL  
 Ch'ien Lung Period.  
 Slight flaring lip, short foot. Milky greenish jade with soft, lustrous surface. Has carved wood stand. *Length, 4½ inches.*
- 314 IVORY CARVING  
 Ch'ien Lung Period.  
 Carved on the interior of a form simulating a bamboo stem, with a mountainous landscape and water, "The Taoist Paradise." *Length, 8 inches.*
- 315 MINIATURE JADE TABLE SCREEN AND SMALL PLAQUE  
 Ch'ien Lung Period.  
 a. Carved and pierced creamy-white jade medallion set in inlaid wood frame crane among clouds. Has carved wood stand.  
 b. Carved and pierced creamy-white jade medallion. Set in small wooden frame.
- 316 JADE GROUP  
 Ch'ien Lung Period.  
 Recumbent bull with a playful karako pulling one of its horns with one hand, and holding a stalk of wheat in the other. Delightful, pale greenish-cream jade of fine even texture. Has carved wood stand. *Length, 3½ inches.*
- 317 JADE COUPE  
 Ch'ien Lung Period.  
 Bowl shape with incurved neck, finely carved with pseudo antique monsters and scrolls in low relief, and two scrolled strap handles with depending stumps terminating in monster-heads. (Slight defect on one stump.) Fine deep olive-green jade with mottlings. Has carved wood stand. *Height, 3¼ inches; width, 6 inches.*
- 318 THREE CARVED IVORIES  
 Ch'ien Lung Period.  
 Chinese citrus known as "the Buddha's hand." Tinted in natural colors, fruit dull yellow, leaves apple-green. Have carved wood stands. *Heights, 5½ inches.*

319 AGATE TRAY

Ch'ien Lung Period.

In the form of a cusped lotus leaf supported by a spray of lotus flowers and pods. Lovely pale blue agate with areas of pale smoked pink. Has carved wood stand. *Length, 5 inches.*

320 JADE FLOWER HOLDER

Ch'ien Lung Period.

Irregular form, carved in deep relief with a Stupa or Shrine set in a grotto overhung with fir trees. Beautiful creamy, greenish-white jade with delicate rust-colored markings. Has carved wood stand. *Height, 4 inches.*

321 MINIATURE CARVED JADE TABLE SCREEN

Ch'ien Lung Period.

Rectangular medallion of smoky gray-white jade, pierced and carved on both sides with "Bat of Happiness," lotus sprays, and key fret. Set in pierced and carved wood frame.

322 JADE CUP

Ch'ien Lung Period.

In the form of a cusped lotus flower, supported by open entwining sprays of lilies and other flowers. Lustrous milky-white jade. Has carved wood stand. *Length, 4<sup>3</sup>/<sub>4</sub> inches.*

323 LAPIS-LAZULI TRIPOD AND COVER

Ch'ien Lung Period.

Bowl carved in deep relief with mythical monsters and scrolls in manner of the Han Dynasty, with two scrolled ogre-head handles. High bell-shaped cover, similarly treated. Charming blue with mottled gray. Has carved wood stand. *Height, 5 inches.*

324 EIGHT JADE TRAYS

Ch'ien Lung Period.

Five-lobed, with raised centre medallion, incised with "Bats of Happiness" in each lobe ; fret centre. Soft, creamy gray-white jade of sound texture. *Diameters, 4<sup>1</sup>/<sub>2</sub> inches.*

325 JADE CUP AND VASE AND COVER

Ch'ien Lung Period.

- a. In the shape of a half-peach with spray of leaves over forming a double handle, in front is a "Bat of Happiness." Creamy greenish-white jade with delightful marking of rich rusty hue. Has carved wood stand.
- b. Vase, deep green jade enriched with pseudo-antique decoration of the Han Dynasty. Has carved wood stand.

326 INTERESTING AGATE GROUP

Ch'ien Lung Period.

Two mandarin ducks with sprays of pond-lilies in their bills. Finely carved in full relief in lovely smoky gray and light, warm brown agate in which occur rich markings of rust color and black. Has carved wood stand. *Height, 3½ inches; width, 5 inches.*

327 JADE BOWL

Ch'ien Lung Period.

Slightly flaring lip, short foot. Worked to an almost eggshell fineness. Iridescent, warm milky-white jade. Has carved wood stand. *Diameter, 4¾ inches.*

328 JADE VASE AND COVER

Ch'ien Lung Period.

Rectangular section, deep bowl body with incurving neck, finely enriched with incuse scroll panels and two rudimentary animal-head handles, stepped cover with fret band. Creamy greenish-white mutton-fat jade. Has carved wood stand. *Height, 6 inches.*

329 JADE FIGURE

Ch'ien Lung Period.

Recumbent figure of an antelope, treated in the archaic manner of the Sung Dynasty. Creamy-white jade of fine texture. Has carved wood stand. *Length, 3½ inches.*

330 BEAUTIFUL AGATE TRAY

Ch'ien Lung Period.

Long, low cusped body over which trail flowers and leaf sprays in full relief, a rabbit is poised at one end. Lus-



trous, warm gray agate with rich rust color on the animal and sprays. Has carved wood stand. *Length, 4 inches.*

331 AGATE GROUP

Ch'ien Lung Period.

"A Fu-lion and its playful cub." Archaic treatment following an earlier school. Warm yellow, gray and brown agate in which delightful veinings of red occur. Has carved wood stand. *Height, 6 inches; width, 5 $\frac{1}{4}$  inches.*

332 ROCK CRYSTAL GROUP

Ch'ien Lung Period.

Two playful cats. Very unusual, clear crystal ranging to deep amethyst in which are many brown hair-line markings. *Length, 4 inches.*

333 AGATE FIGURE

Ch'ien Lung Period.

An archaic Fu-lion seated on his haunches with head turned to right. Blue agate with lighter colored veinings. Has carved wood stand. *Height, 6 inches.*

334 REMARKABLE JADE CUP

Ch'ien Lung Period.

The cup is held by a deep network of flowers and scrolls amongst which are several cranes. Creamy-white jade of even character. Has carved wood stand. *Length, 4 $\frac{1}{2}$  inches.*

335 ROCK CRYSTAL GROUP

Ch'ien Lung Period.

"Shou-lao," The God of Longevity, seated on his recumbent sacred deer. Fine amethyst rock crystal. Has carved wood stand. *Length, 2 $\frac{1}{2}$  inches.*

336 AGATE GROUP

Ch'ien Lung Period.

A Taoist Immortal, "Chung-li-Ch'uan" and an attendant. Finely carved in warm gray agate with delightful rust-colored markings. *Height, 4 $\frac{1}{2}$  inches.*

337 TWO-HANDLED JADE COUPE

Ch'ien Lung Period.

Straight bowl-shaped, with short foot, two side lug handles with shaped strap and pendants; incuse enrichment of the hundred marmol points and Shou medallion. Jade of a pale green cast. Has carved wood stand. *Length, 5 inches.*

338 AGATE GROUP

Ch'ien Lung Period.

Recumbent Fu-lion and its cub playing with the brocade ball. Simple, vigorous modeling of a high order. Pearly blue-gray agate with charming areas of pale pinkish-red tones. Has carved wood stand. *Diameter, 4 inches.*

339 FOUR SMALL JADE CUPS

Ch'ien Lung Period.

Flaring sides with slightly turned-over lips, on short feet; of almost eggshell fineness. Lustrous milky-white jade with wavering iridescence. *Heights, 1½ inches.*

340 BEAUTIFUL JADE TRAY

Ch'ien Lung Period.

Circular bowl-shape, with delicate flaring lip, and small straight foot. Translucent milk-white jade. *Diameter, 6¾ inches.*

341 TWO JADE INKBOXES AND COVERS

Ch'ien Lung Period.

Low, circular moulded bowls and covers enriched with bands of incised, conventionalized leaves, incuse medallions in tops delicately cut with scrolled sprays of peonies. Lustrous, light sea-green jade of rare, even texture. Have carved wood stands. *Diameter, 4¾ inches.*

342 JADE CUP

Ch'ien Lung Period.

Slightly expanding sides, on short foot. Creamy greenish jade with a lovely texture resembling snowflakes. Has carved wood stand. *Height, 2¾ inches.*

- 343 **DOUBLE FLOWER HOLDER AND COVER IN JADE**  
 Ch'ien Lung Period.  
 Flat vase with scroll handles and dome cover is knitted to a rustic receptacle by sprays of prunus blossoms in full relief. Light, creamy green jade of exceptionally even tone. Has carved wood stand. *Height, 8 inches; width, 6 inches.*
- 344 **ROCK CRYSTAL GROUP**  
 Ch'ien Lung Period.  
 A mandarin duck feeding amongst pond-lilies. Very rich amethyst rock crystal with lighter areas. Has carved wood stand. *Length, 3¼ inches.*
- 345 **AGATE FIGURE**  
 Ch'ien Lung Period.  
 Standing rooster; monumental modeling exhibiting exceptional perception of bird action. Pale warm gray agate with ruby eyes. Has carved wood stand. *Height, 3¼ inches; width, 6½ inches.*
- 346 **AGATE FLOWER RECEPTACLE**  
 Ch'ien Lung Period.  
 In the form of a gnarled tree trunk over which are open-work branches of ripe peaches, in which are two boys plucking the fruit. Pale bluish-gray agate richly marked with fine rust color. Has carved wood stand inlaid with silver. *Height, 8 inches.*
- 347 **JADE GROUP**  
 Ch'ien Lung Period.  
 Finely carved creamy-white mutton-fat jade, The Lohan "Kwan-Show" seated at his devotions in a grotto, on the rock overhead is a complimentary ideographic description by the reigning Emperor. Has carved wood stand. *Height, 4 inches.*
- 348 **ROCK CRYSTAL GROUP**  
 Ch'ien Lung Period.  
 Strong archaic modeling "A Ram cleaning its young." Charming rock crystal varying from clear to warm, pale

amber with occurrent hair-line markings. Has carved wood stand. *Length, 3½ inches.*

349 ROCK CRYSTAL GROUP

Ch'ien Lung Period.

A recumbent Fu-lion and its playful cub. Rare black rock crystal with fine hair-line markings. Has carved wood stand. *Height, 2 inches; width, 2½ inches.*

350 JADE GROUP

Ch'ien Lung Period.

Firmly cut, recumbent figure of an antelope with lotus flowers in its mouth, and young lying near its haunches. Pale sea-green, creamy jade of fine texture. Has carved wood stand. *Length, 4¼ inches.*

351 AGATE VASE AND COVER

Ch'ien Lung Period.

Flask-shaped, with ribs simulating bamboo stems; over these is a trailing spray of seaweed amongst which occur several crabs. Cover with crab terminal. Gray agate with darker patches and soft rust-colored markings. (Small lip chip.) Has carved wood stand. *Height, 4¾ inches.*

352 ROCK CRYSTAL WRITER'S POT AND CHAINED COVER

Ch'ien Lung Period.

Globular, carved with three lizard-like monsters in deep relief, the tail of one holds a long linked chain which is attached to cover, all cut from the solid, clear rock crystal. Has carved wood stand. *Width, 3½ inches.*

353 ROCK CRYSTAL GROUP

Ch'ien Lung Period.

Three playful swimming mandarin ducks delightfully grouped. Varying creamy and clear black rock crystal. Has carved wood stand. *Length, 4½ inches.*

354 AGATE FIGURE

Ch'ien Lung Period.

Squatting hunched figure of "The Happy Lohan," a

rosary in his right hand, his robes falling below his protruberant belly. Creamy-gray agate, with interesting rust-color markings in front of robe and feet. Has carved wood stand. *Length, 4 $\frac{1}{4}$  inches.*

355 AGATE FIGURE

Ch'ien Lung Period.

Interesting standing figure of a roaring bull, its haunches incised with "thunderbolt" symbols. Deep, blue-gray agate with lighter veining on back and forehead, and beautiful warm rust-colored areas. *Length, 6 inches.*

356 UNUSUAL AGATE TEAPOT

Ch'ien Lung Period.

Globular, with spout formed of a bird's head and wings, rustic handle with small cover attached by link chain cut out of the mass of agate; supported on an openwork, rustic foot holding flower sprays which are undercut and trail over the pot, two birds are perched amongst the sprays. Beautiful blush-blue and pink agate with rich rust-colored areas. *Height, 5 inches; width, 8 $\frac{1}{2}$  inches.*

357 CLEAR ROCK CRYSTAL GROUP

Ch'ien Lung Period.

A swimming mandarin duck with its two young are feeding on pond-lilies, a small toad occupies a lily-leaf on the right. Well modeled and deeply undercut. Has carved wood stand. *Height, 3 inches; length 4 $\frac{1}{2}$  inches.*

358 ROCK CRYSTAL POT-POURRI VASE AND COVER

Ch'ien Lung Period.

Deep bowl-shaped, with wide flange at shoulder from which depend four T'ao-t'ieh ogre-heads and straps supporting loose rings, all cut out of the solid. Square mouth holding a swinging bail handle with pierced loop for suspension, canted dome cover with bird terminal. *Height, 4 $\frac{3}{4}$  inches.*

359 ROCK CRYSTAL GROUP

Ch'ien Lung Period.

Two mandarin ducks feeding on pond-lilies. Broadly

modeled. The large duck of brilliant, clear rock crystal, the other of smoky-gray. Has carved wood stand. *Height, 4 inches; length, 5½ inches.*

360 AGATE FIGURE

Ch'ien Lung Period.

Standing pigeon about to rise from the ground. Interesting in pose. Lustrous blue-gray agate. *Height, 4 inches; width, 6¾ inches.*

361 BRILLIANT CLEAR ROCK CRYSTAL VASE

Ch'ien Lung Period.

Ovoid, with curving shoulder on which are four T'ao-t'ieh ogre-heads with loops, three support independent rings and one a long link chain which is attached at the other end to the incurving cover; all cut from the solid mass of rock crystal. (Slight natural abrasion in back.) Has carved wood stand. *Height, 6 inches.*

362 ROCK CRYSTAL WRITER'S POT AND COVER

Ch'ien Lung Period.

Depressed globular form, over which in full relief, two lizard-like dragons are crawling. Small cover with snail terminal. A slight amethyst tone runs through the crystal. Has carved wood stand. *Width, 3½ inches.*

363 ROCK CRYSTAL VASE AND COVER

Ch'ien Lung Period.

Flattened vase, supported by three rams in almost full relief and cut from the solid mass, is enriched with small snails in relief and two ogre-head handles with loose rings, and a key fret band incised on the neck. Incurving dome cover with rosetted terminal. Brilliant, deep, pellucid clear crystal. Has carved wood stand. *Height, 6 inches.*

364 BEAUTIFUL JADE VASE AND COVER

Ch'ien Lung Period.

Graceful pear-shape, flattened; short outcurving foot and rim, incuse enrichment of flowering chrysanthemums growing over rock-work; reverse a prunus tree in blossom. On the shoulder is a coiled five-clawed dragon in open

cutting and full relief, seeking the sacred pearl. Incurving moulded dome cover with hollow rope terminal. Pale milky gray-green jade of excellent tone and texture. Has carved wood stand. *Height, 9½ inches.*

365 ROCK CRYSTAL VASE, COVER AND FLOWER RECEPTACLE

Ch'ien Lung Period.

Charming, pear-shaped vase with incurving dome cover holding bird terminal, knitted to the rustic receptacle at its side by an overgrowth of prunus sprays, branches of a fir tree, bamboo and emblematic fungi. Brilliant, clear, pellucid rock crystal. Has carved wood stand. *Height, 7 inches; width, 7 inches.*

366 INTERESTING AGATE GROUP

Ch'ien Lung Period.

Two pigeons billing and cooing to one another, stand on an open rockwork base. Translucent, pinky-blue agate with large mottled areas of rusty yellow. *Height, 7½ inches; width, 7 inches.*

367 BEAUTIFUL JADE VASE

Ch'ien Lung Period.

Flattened pear-shape, on short outcurving foot; rim and neck enriched with key fret; above the shoulder two ogre-head and strap handles support loose rings cut from the solid. Dome cover with two similar ogre-head handles and an open scroll terminal. Delightful sea-green jade of a milky texture. *Height, 9 inches.*

## BOWLS AND VASES IN COLORED GLASS OF THE CH'IENTUNG PERIOD

- 368 TWO PINK GLASS BOWLS, TRAYS AND COVERS  
Ch'ien Lung Period.  
Bell-shaped bowls, four-lobed trays, dome covers with plain terminal. *Diameter, 4 $\frac{1}{4}$  inches.*
- 369 BLUE GLASS BOWL AND COVER  
Ch'ien Lung Period.  
Rounded and flaring sides. Seal cut on foot. Has carved wood stand. (Rims chipped.) *Diameter, 6 $\frac{1}{2}$  inches.*
- 370 LARGE PINK GLASS BOWL  
Ch'ien Lung Period.  
Deep bowl with flaring lip, finely mottled with deep pink. Has carved wood stand. *Diameter, 6 $\frac{3}{4}$  inches.*
- 371 AMETHYST GLASS VASE  
Ch'ien Lung Period.  
Tall ovoidal, with flaring foot and short, straight neck. Deeply cut in relief with ogre-head and ring handles, and blossoming plant rising among rocks. Has carved wood cover and stand. *Height, 4 $\frac{1}{4}$  inches.*
- 372 TWO HEAVY GLASS BOTTLES  
Ch'ien Lung Period.  
Bulbous, on short feet, with long, tubular necks. Charming, varying pale pinks ranging to a snow-white. Have carved wood stands. *Heights, 6 $\frac{1}{4}$  inches.*
- 373 RARE TURQUOISE-BLUE GLASS VASE  
Ch'ien Lung Period.  
Globular, with long neck. Rare even color. Has carved wood stand. *Height, 9 inches.*
- 374 CANARY-YELLOW GLASS VASE  
Ch'ien Lung Period.  
Tapering from a rounded shoulder, with short neck and flaring mouth. Cut in relief with all-over trailing sprays of lotus and other flowers. Has carved wood stand. *Height, 6 inches.*



## CINNABAR LACQUERS, DECORATIVE CARVED PANELS AND CABINET-DOORS OF THE MING AND CH'ING DYNASTIES

### 375 SIX-FOLD TABLE SCREEN

Ch'ien Lung Period.

Six oblong porcelains in five-color enamels, hold a continuous story, and are set in hua-li frames the upper and lower panels of beautifully grained elm-root. The story depicts the "Eight Taoist Immortals," "Shou-lao, God of Longevity" and "San-tai" the three Heavenly Intendants, in various attitudes, seated or standing on the cloud-forms or on the water at the foot. *Each panel: Height, 1 foot 7 inches; width, 6 inches.*

### 376 SMALL LACQUER BOX AND TWO TRAYS

Ming Dynasty.

Square box with lifting lid and interior tray, used for red sealing powder. Top enriched with minute landscape and figures, inlaid with mother-of-pearl on black lacquer enlivened with gilding. Sides with charming sprays of peonies in similar manner.

Square Trays with rounded indented corners, of even finer workmanship, in similar manner. (Rim defects.) *Height, 3¼ inches; width, 3½ inches. Trays: 4¼ inches square.*

### 377 TWO CINNABAR LACQUER JARDINIÈRES

Ch'ien Lung Period.

Elongated; formed of four inverted bell-shaped lobes, wide rims, and four short, shaped feet. Enriched with four medallions, two holding landscapes and figures, "Philosopher" and "Tao-yuan-Ming" and two groups of growing flowers; the intervening space filled with all-over floral scrolls; brocade-fret grounds of yellow. Rims with key-fret and Shou medallions set in a diamond-fret pattern. *Heights, 4¼ inches; length, 11⅛ inches.*

378 INLAID FOUR-FOLD TABLE SCREEN

Ch'ien Lung Period.

Each panel decorated with vase of dainty flowers inlaid with various-colored jades, mother-of-pearl and steatite on black lacquered ground. (Slight defects in inlay.)  
*Each panel: Height, 1 foot 6 inches; width, 6 inches.*

379 TWO LACQUER CABINET DOORS

Ming Dynasty.

Landscapes; black grounds enriched with gold and brown. The upper portion filled with palaces and trees; in the foreground is a festival depicting innumerable figures at various antics. (Slightly restored.) *Each door: Height, 4 feet 9 inches; width, 1 foot 4 $\frac{1}{4}$  inches.*

380 TWO LACQUER CABINET DOORS

Ming Dynasty.

Landscapes; backgrounds enlivened with red, gold and mother-of-pearl inlay. Birds, ducks, and lotus flowers float in the foregrounds and above are tangles of flowering plants. Charming diamond and circle border. *Each door: Height, 3 $\frac{3}{4}$  inches; width, 1 foot 1 inch.*

381 TWO LACQUER CABINET DOORS

Ming Dynasty.

Summer landscapes in black and gold. Al fresco scenes with summer-houses and balustrades beyond, various groups of personages are playing chess, in conversation and walking, and two boys are playing at hobby-horse. (Slightly restored.) *Each door: Height, 3 feet 6 $\frac{3}{4}$  inches; width, 10 inches.*

382 TWO LACQUER CABINET DOORS

Ming Dynasty.

Summer landscapes in black and gold. Al fresco scenes with summer-houses and balustrades beyond, various groups of personages are playing chess, in conversation and walking, and two boys are playing at hobby-horse. (Slightly restored.) *Each door: Height, 4 feet; width, 1 foot.*





LANDSCAPE AND FIGURE PANEL  
OF KINGFISHER PLUMES  
[ NUMBER 387 ]

383 TWO LACQUER CABINET DOORS

Ming Dynasty.

Landscapes with rocks; above flowering plants are profusely blooming and many birds are flying. Black grounds relieved with gold and brown. (Slight repairs.) *Each door: Height, 4 feet ½ inch; width, 1 foot 2 inches.*

384 TWO LACQUER CABINET DOORS

Ming Dynasty.

Black grounds enlivened with red, gold and mother-of-pearl inlay. Growing tree-peonies and other flowers in bloom amongst which flit birds and butterflies, a splendid phoenix is standing on rocks on the right. Charming borders of interlacing diamonds and circles. *Each Door: Height, 3 feet ¾ inches; width, 1 foot 1 inch.*

385 TWO LACQUER CABINET DOORS

Ming Dynasty.

Landscapes; black grounds relieved with gold "The Taoist's Paradise," many palaces, terraces and summer-houses overlooking pleasant streams with the cool mountains in the distance; various groups of figures appear, some are boating, others in conversation and drinking tea. Lengthy inscriptions at top centres. (Slightly repaired.) *Each Door: Height, 4 feet 3 inches; width, 1 foot 3 inches.*

386 TWO LACQUER CABINET DOORS

Ming Dynasty.

Growing prunus and azaleas in blossom, rise from ponds in which grow lotus and water-plants, and ducks swim; above two phoenix scream to one another. Black grounds enlivened with gold. (Slightly restored.) *Each door: Height, 4 feet 6 inches; width, 1 foot 4 inches.*

387 UNIQUE LANDSCAPE PANEL

Ch'ien Lung Period.

"The Nine Wise Old Men of China." The wise men are in various groups conversing, drinking tea and reading a scroll. On a foot-bridge in the foreground is "Shou-lao," a mortal before him presents a box of good gifts. This amazingly brilliant conception, admirable in its balance, is executed in turquoise-blue, violet, green and pink king-

fisher plumes, heightened with small gold filets; the features and hands are of carved ivory. The rare effect is attained through the sky and the winding streams being of rich antique black velvet. In contemporary hua-li wood frame. *Height, 2 feet 1½ inches; width, 1 foot 8 inches.*

[*Illustrated.*]

388 UNIQUE DECORATIVE LANDSCAPE PANEL

Ch'ien Lung Period.

“The Welcoming of Shou-lao, God of Longevity.” In the foreground is a bank of a winding river. “Shou-lao” advances and two imperial personages greet him, beyond are two attendants, one holding the State Parasol and the other the peacock fan; on the right is a marble jardiniere and growing over it is a large peach-tree in blossom, bats fly in the air, and a summer-house is on the further bank. The marvelous brilliancy is attained through the use of king-fisher plumes in turquoise-blue, lavender, brown and green, heightened with gilded filets. The features and hands, the jardiniere, bats and blossoms are of tinted ivory; the streams and sky are of antique black velvet. In contemporary hua-li wood frame. *Height, 1 foot 11 inches; width, 2 feet 5 inches.*

389 TWO MAGNIFICENT CARVED HUA-LI WOOD  
Panels

Ch'ien Lung Period.

Two pilgrims approaching the Taoist Paradise. The bridges, trees, palaces, rocks and distant mountains all intricately carved in hua-li in low relief, are planted on a ground of dull blue; two travelers on the bridge and the group of three on the distant shore, are carefully carved in clear creamy unctuous jade. The companion panel is treated in a similar manner but is a more varied composition. Fine chased bronze hanging handles. In contemporary frames of hua-li, carved and shaped. *Heights, 2 feet 8½ inches; width, 3 feet 6 inches.*

390 TWO DECORATIVE PANELS

Ch'ien Lung Period.

Hanging baskets richly wrought with turquoise-blue king-fisher plumes set in gilded bronze symbols of bats, jardi-





RARE CINNABAR LACQUER FU-LION

MING DYNASTY

[ NUMBER 392 ]



nieres and flowers; enriched with seed-pearls, jade, carnelian and other semi-precious stones. In contemporary hua-li frames with finely scrolled and chased gilded bronze handles. *Heights, 3 feet 6 inches; width, 2 feet 6 inches.*

391 TWO LARGE PIETRA DURA PANELS

Ch'ien Lung Period.

A most interesting conception, displaying eight symbols on one and nine on the other, of "Po Ku, Hundred Antiques." Ingenuously worked in low relief in jades of many colors, rose crystal, ivory, mother-of-pearl and hua-li wood; orange-peach lacquer grounds. In contemporary, carved, scrolled hua-li frames with chased and gilded bronze lifting handles. *Heights, 4 feet 1 inch; width, 2 feet 4½ inches.*

392 RARE CINNABAR LACQUER ANIMAL STATUE

Ming Dynasty.

A Fu-lion resting on his haunches, with uplifted paw on a brocaded ball. Oblong base with remarkable key-fret and entwining leaf scroll support. Lion of ferocious mien; highly conventionalized modeling. The ball is covered with gilded metal network. (Slight defects and repairs incident to its age.) *Height, 1 foot 6 inches; length, 1 foot 9 inches.*

[*Illustrated.*]

## CARVINGS IN JADE AND IVORY OF THE MING DYNASTY

393 IMPERIAL SEAL IN IVORY

Ming Dynasty.

Square seal surmounted by well modeled recumbent elephant. Yellow patina. *Height, 2¾ inches.*

394 RUSTIC JADE FLOWER HOLDER

Ming Dynasty.

Over the irregular trunk-like form conventionalized fir branches are twined. Curious pearly-gray jade with markings resembling a giant crackle in porcelain. Has carved wood stand. *Height, 6 inches.*

395 POET'S BRUSH POT IN JADE

Ming Dynasty.

High cylindrical form on three small half round feet, delicately incised with branch of prunus; on the reverse a stanza of a poem and two small seals. Lustrous gray fir-tree jade. *Height, 3 $\frac{3}{4}$  inches.*

396 JADE BUDDHISTIC FIGURE

Ming Dynasty.

A sage standing and declaiming to his disciples; wearing a long robe and voluminous mantle, which is held up in front by his expressive hands, and small rosetted cap. Creamy-gray jade of excellent texture. Has carved wood stand. *Height, 3 $\frac{3}{4}$  inches.*

397 RARE IMPERIAL JADE SEAL

Ming Dynasty.

Rectangular seal, surmounted by a seated figure of a wierd dragon-monster. Deep, rich lustrous jade of fine texture. *Height, 1 $\frac{3}{4}$  inches; width, 2 $\frac{3}{4}$  inches.*

398 JADE LIBATION CUP

Ming Dynasty.

In the form of a long cusped petal on short foot, flanged handle with irregular key-fret support. The body and handle enriched with incuse animalistic forms, fungi and incised key-fret. Interesting pearl-gray mottled jade. Has carved wood stand. *Length, 4 $\frac{1}{4}$  inches.*

399 RARE JADE CUP

Ming Dynasty.

Cylindrical, with raised banding at lip and foot, enriched with incised scrollings supported on three T'ao-t'ieh ogre-head feet. Ring strap handle with incuse animalistic ornamentation. On the body archaic irregular incuse fret-bands terminating in two facing dragons, with the one hundred marmol points filling the background. The foot is sunk and incised with animalistic scrolls. Has carved wood stand. *Height, 3 $\frac{3}{4}$  inches.*

400 CARVED IVORY FIGURE

Ming Dynasty.

"Chung-li Ch'uan," one of the Eight Taoist Immortals. Of dignified mien, standing and wearing a full beard, a priestly cap of rose-wood, sweeping and clinging draperies falling in simple folds and concealing one hand, in the other he holds a palm-leaf fan. Rich patina of browns and yellows. Set in carved wood stand. *Height, 8½ inches.*

401 CARVED IVORY FIGURE

Ming Dynasty.

"Kuan Yin," the Goddess of Everlasting Mercy and Motherhood. Standing with slightly swaying body, her voluminous robe caught up by her concealed hand; her other hand close to her breast. She wears a quaint double-knobbed cap with leaf ornamentation round the front. Rich patina of ruddy brown and yellow. Set in carved wood stand. *Height, 10 inches.*

402 CARVED IVORY FIGURE

Ming Dynasty.

"Kuan Yin," the Goddess of Everlasting Mercy and Motherhood. Standing with slightly swaying figure and holding an infant to her breast. On her right arm hangs a rosary. She is attired in clinging robes which fall in folds of great elegance, hair dressed close to forehead and falling on to her shoulders. Round her head, but free from it, is a curious narrow drapery. Rich full amber and warm yellow patina. Set in a carved wood lotus thalamus stand. *Height, 9 inches.*

403 CARVED IVORY FIGURE

Ming Dynasty.

"Kuan Ti," the God of War. Standing in voluminous robes, his right hand supporting his belt, the other concealed beneath the folds of his robe, his protruberant belly exposed. He wears a rosewood cap. Of powerful expression with long drooping mustache which unites with his chin-piece. Rich deep warm brown patina. Set in carved wood stand. *Height, 5¼ inches.*

PAINTINGS, NEEDLEWORK AND  
K'O SSU PANELS  
OF THE  
MING DYNASTY

In China, the Japanese terms, Kakemono and Makemono, are almost unknown. The Chinese equivalents for these, varying, as they do, for sizes, have been employed in this catalogue, namely,—

Very Long Hanging Paintings "Sze-Hou"  
Large Hanging Paintings "Phia-Fu"  
Medium Hanging Paintings "Chun-Tang"  
Small Hanging Paintings "Cha-I"  
The Hand Scrolls "Su-Juen"

404 FLOWERS, ROCK AND STREAM

Ming Dynasty.

Cha-I. A group of choice flowers is growing over a rock near a small stream. Dainty embroidery worked solid in silk threads of naturalistic colors on tan silk ground. *Height, 2 feet 1 inch; width, 1 foot 1 inch.*

405 BIRD, FLOWERS AND ROCKS

Ming Dynasty.

Cha-I of K'o Ssu, hand-loom silk tapestry. At the foot of a group of rocks, a clump of narcissus is growing; above, on the branch of a peach-tree, is a bird. Delicate colored silks on tan ground. *Height, 2 feet 9 inches; width, 1 foot 4 inches.*

406 ONE OF THE EIGHT TAOIST IMMORTALS

Ming Dynasty.

Cha-I, in K'o Ssu, hand-loom silk tapestry. The dainty "Lan Ts'ai Ho" walks beside a stream under a willow-tree, her attribute, a large basket of flowers, carried over her shoulders on a long pole. Dainty coloring on a tan ground. *Height, 1 foot 8 inches; width, 1 foot 2 inches.*

407 STORK AND FLOWERS

Ming Dynasty.

Cha-I. "A Painting in Needle-work." On a sloping rocky bank, overgrown with tree peonies in lovely bloom, a stork descends to the pool below, and a bird and a gay

butterfly hover above. The stork is executed in seed pearls, the flowers and bird in solid stitches of brilliant harmonious silk; tan satin background. A beautiful small brocade mounting of the K'ang Hsi Period. *Height, 2 feet 5½ inches; width, 1 foot 2½ inches.*

408 AN ANGRY TIGER

Ming Dynasty.

Chun-Tang, by LONG YUAN. On hilly rocky ground a lissome tiger stands with its tail lashing the air; with gnashing teeth and flashing eyes, he awaits his prey. Apple in blossom and bamboo-trees grow on the right, and a torrid stream rushes by the foot of the trees. Executed on tan silk. Signed at lower right. *Height, 4 feet 8½ inches; width, 2 feet ½ inch.*

409 CRESTED WHITE HERON AND POND-LILIES

Ch'ien Lung Period.

Cha-I. A white heron stands before a group of white and pink pond-lilies, and a many-colored humming-bird rests on a lily stem above. Woven in white and delicate colored grasses. *Height, 3 feet 3 inches; width, 1 foot 7 inches.*

410 THE HUNDRED HAPPY BOYS

Ming Dynasty.

Chun-Tang, in K'o Ssu, hand-loom silk tapestry, Amongst the Isles of The Blest the Hundred Happy Boys are up to every antic and game conceivable, boating, dancing, mumming, archery, racing, climbing trees, flying kites, and many other boyish amusements. Executed in rich dainty colors on tan ground. *Height, 5 feet 10 inches; width, 3 feet ½ inch.*

411 SPOTTED DEER AND BATS

Ming Dynasty.

Cha-I. "Shou Lao's" familiar, the spotted deer, is seated in a rocky landscape, watching the flight of a red bat; emblems of longevity and happiness. A typical birthday gift for an elderly Chinese gentleman. Executed in low tones on tan silk. *Height, 3 feet 2½ inches; width, 1 foot 6½ inches.*

412 EMBLEMS OF LONGEVITY AND HAPPINESS

Ming Dynasty.

Chun-Tang, in K'o Ssu hand-loom silk tapestry. A spotted deer is standing beside its recumbent fawn amongst flowers, on the bank of a small rushing rivulet. On the right is a peach-tree in plenteous fruit, overgrown by an old cedar-tree. Red bats fly in the sky. All emblematic symbols of the subject. On tan silk. *Height, 5 feet 3 inches; width, 2 feet 7½ inches.*

413 THE HARBINGERS OF SPRING

Ming Dynasty.

Chun-Tang, in the Sung manner by an early Ming painter. A rugged, gnarled hawthorn-tree in blossom, holds two birds who are cheeping to one another. Pink magnolia and a crimson berry-blossom trail over the foot of the hawthorn. A rabbit is seated in the foreground. A light crisp snow mantles the scene. Executed on tan silk. *Height, 5 feet 4½ inches; width, 2 feet 9 inches.*

414 THE OLD FISHERMAN AND HIS CATCH

Ming Dynasty.

Cha-I of K'o Ssu, hand-loom silk tapestry. An old fisherman, in broad-brimmed hat and old lavender coat, is unhooking a fish from his line, while a diminutive urchin stands by holding his rod. A delightful harmony in pale lavender, greens and soft tan. *Height, 3 feet 4 inches; width, 1 foot 10 inches.*

415 PORTRAIT OF A COURT BEAUTY

Ming Dynasty.

Chun-Tang. The lady stands resting on the trunk of a gnarled old prunus-tree which has just blossomed; rocks and bamboo are on the right and two small birds chatter to one another; she is clad in beautiful brocade and embroidered robes in which crimson and shades of blue predominate, her hair in a high double coif with banding and two side pendant drops. Executed in brilliant harmonious colors on tan paper. *Height, 5 feet 8 inches; width, 3 feet 1 inch.*

Two appreciative seals of the Ming Dynasty on the lower right.

416 ROCKS, WATER AND MONKEY

Ming Dynasty.

Chun-Tang. A white monkey is swinging himself in mid-air from the limb of a tree on to a hanging vine which trails over the limb; below is a rapid stream swirling around rocks. Executed on tan silk. *Height, 4 feet 11 inches; width, 2 feet.*

Inscribed on right with title and two red seals.

417 SHOU LAO, THE GOD OF LONGEVITY

Ming Dynasty.

Chun-Tang, in K'o Ssu, hand-loom silk tapestry. The smiling old man, with bearded face and protuberant brow, attired in remarkably voluminous embroidered robes, holds a huge peach in his hands; behind him to the right is his familiar, a spotted deer, and to the left is a youthful attendant who carries his pilgrim staff, to which is tied various fruit and a scroll. Soft rich colors on tan ground. *Height, 3 feet 5 inches; width, 2 feet 1 inch.*

418 SAMANTABHADRA

Ming Dynasty.

Chun-Tang. Known as "Pu-Yen" to the Chinese, who founded the famous Buddhistic Temple at Szechuan in his honor. Seated, attired in richly embroidered robes of many colors, with one leg crossed under, on the back of a Fu-lion of weird features and form. In the rear an attendant disciple is in the act of supplication. Rich warm colors on tan silk. *Height, 4 feet 5 inches; width, 2 feet 2 inches.*

419 PORTRAIT OF A COURT LADY

Ming Dynasty.

Chun-Tang. The wife of a High Court Official. Seated on a lacquer chair, attired in emerald-green robe, with her hands concealed in its folds; the girdle is profusely embroidered with birds and flowers in brilliant colors. She wears a high jewelled tiara with two depending double ropes of pearls, and pearl earrings. A stately capable personage. A rare brocaded mantle is thrown over the back of the chair. *Height, 5 feet 1 inch; width, 2 feet 9 inches.*

- 420 AN OFFERING FOR LONG LIFE AND HAPPINESS  
Ming Dynasty.  
Cha-I, in Ko'-Ssu, hand-loom silk tapestry. "Shou-lao," the God of Longevity, with smiling countenance and richly attired, carries flowers and his pilgrim staff; beside him is his familiar, a spotted deer, also bearing flowers; above is a flying bat. Symbols of long life and happiness. A typical Chinese birthday gift for an elderly gentleman. Woven in rich harmonious colors on old tan ground. *Height, 2 feet 11 inches; width, 1 foot 6 inches.*
- 421 ROOSTER AND HEN  
Ming Dynasty.  
Chun-Tang, by WONG-WEI-LI. A gallant rooster standing high on a rocky ledge, heralds the coming morn, while his more mundane mate is feeding in the immediate foreground; from behind the rocks many flowers in bloom appear; overhead a bullfinch is perched in the sheltering branch of a large fig-tree. Rarely beautiful drawing marks this spirited composition; the brown rooster, with red comb and bristling feathers, is a vigorous and joyful note. Executed on tan silk. *Height, 5 feet 8 inches; width, 3 feet 3 inches.*  
Signed on lower right.
- 422 THE FAIR EMBROIDRESS  
Ming Dynasty.  
Cha-I. A young lady of the Court, attired in richly embroidered robes, is seated on a long rustic settee busily plying her needle on a small embroidery hoop such as is to-day in vogue in Europe and America. Behind her is a table holding a vase of beautiful flowers, and a curious oval window through which is seen a rocky landscape; nearby is an attendant holding a tall peacock-feather fan, while a servitor approaches with various silks for the work in hand. At the lower right are two little boys, one carrying a cluster of ripe pomegranates. Executed on tan silk. *Height, 3 feet 5 inches; width, 1 foot 7 inches.*
- 423 BIRDS AND FLOWERS  
K'ang Hsi Period.  
Cha-I, in K'o-Ssu, hand-loom silk tapestry. On a high



branch of a rugged and diminutive, blossoming old hawthorn-tree is perched a black bird twittering to his mate on a lower branch; sprays of mallows and berry-like blossoms gracefully trail over from the left. Delicate soft colors on tan ground. *Height, 3 feet 5½ inches; width, 1 foot 2 inches.*

424 THE FAIRY "MA-KU"

Ming Dynasty.

Chun-Tang. The bountiful fairy, the bringer of good things, stands with swaying body attired in rich embroidered robes and flying draperies, carrying beautiful branches of apple-blossoms, magnolia, peonies, and two huge peaches on her back; beside her is her familiar, a graceful spotted antelope. Rich in harmonious colors on deep blue ground. Executed on silk. A masterpiece of pure decoration. *Height, 3 feet 1½ inches; width, 2 feet 1 inch.*

425 TEMPLE AND PORT OF TANG-WONG-GO, ON YANG-STE RIVER

Ming Dynasty.

Chun-Tang, by WEN-CHEN-MING. In the foreground, set amongst trees, are the elaborate buildings of the famous temple; beyond is the busy port with its many rows of masts and junks loading or unloading at the wharves; in the distance is the winding river with its craft and hilly banks. In rich dull coloring on tan silk. *Height, 3 feet 1 inch; width, 3 feet 1 inch.*

Signed at the upper left with description and stating that this painting is a copy of an earlier one painted by the Sung artist, "Chou-Chin-li."

426 TEMPLE AND PORT OF TANG-WONG-GO, ON YANG-STE RIVER

Ming Dynasty.

Cha-I, by WEN-CHEN-MING. Another prospect, otherwise similar to preceding. *Height, 3 feet 1 inch; width, 1 foot 11½ inches.*

427 LADY OF THE COURT WITH MIRROR

Ming Dynasty.

Chun-Tang, by NAN-MAI. The court beauty, in her embroidered silken robes, stands on a balcony under a

sweet blooming hawthorn-tree; she holds her mirror before her face and sighs for greater beauty. Brilliant harmonious colors on old tan silk. *Height, 4 feet 7 inches; width, 2 feet 2 inches.*

Signed and dated, and two seals at lower left.

428 A FOREIGN MISSION TO A CHINESE EMPEROR

Ming Dynasty.

Chun-Tang. Through a rocky, mountainous, and windy defile, hung with clouds in the upper portion, a gallant band of Turkoman horsemen are descending, a white elephant in their midst. A flaming bowl of fruit is being carried in the rear, and higher up only the flag-tops of the rear guard can be seen. The gay costumes of the figures give a rich and very decorative quality to this painting. Executed on tan silk. *Height, 7 feet 1/2 inch; width, 2 feet 3 1/2 inches.*

429 BIRDS AND TREES

Ming Dynasty.

Cha-I, in K'o Ssu, hand-loom silk tapestry. A prunus-tree, growing on the rocky bank of a tiny stream, has attracted many finches, busily warbling; some are flying, while others perch in the branches. A vivid sense of movement is strongly evinced. In dull rich colors on a ground of deep tan. *Height, 2 feet 3 inches; width, 1 foot 1 1/2 inches.*

Two appreciative seals of the Collector, "Chin-chin-tsa" and his eulogy are on the upper right.

FOURTH SESSION  
CARVINGS IN JADE, AGATE, LAPIS  
LAZULI AND ROCK CRYSTAL  
OF THE  
CH' IEN LUNG PERIOD

(Continued)

NUMBERS 430 TO 530

430 TWO JADE GIRDLE PENDANTS

Ch'ien Lung Period.

- a. Oval, carved with "Shou Lao," God of Longevity, reverse, incuse enrichment of lengthy ideograph. Creamy mutton-fat jade, rose crystal drop.
- b. Circular, with open centre, decorated with the hundred marmol points; reverse, holds stanzas of a poem. Creamy-white mutton-fat jade, rose crystal drop.

431 TWO JADE COSTUME PENDANTS

Ch'ien Lung Period.

- a. Cartouche, delicately carved with bird perched on branch of prunus tree; reverse, incuse seal. Creamy-white jade depending from rose crystal drop.
- b. Rectangular, incuse carving of karakos playing. White mutton-fat jade depending from rose crystal drop.

432 TWO JADE BELT PENDANTS

Ch'ien Lung Period.

- a. Panelled cartouche of highly decorative character, holding a phoenix with outspread wings and tail; reverse, curious dragon-monster. Rich apple-green jade, depending from rose crystal drop.
- b. Flat, panelled, circular disc with scrolled terminal and base, on reverse, an incuse seal. Milky-white jade, depending from rose crystal drop.

433 TWO RARE AMBER COSTUME PENDANTS

Ch'ien Lung Period.

- a. Large, flat ovoidal pendant, beautifully carved in low relief with butterfly and peony sprays. Full, rich and transparent amber depending from rose crystal drop.
- b. Irregular form, of fine topaz-yellow, holding in its body two green beetles which retain their wonderful color. Rose crystal drop.

434 TWO BEAUTIFUL JADE COSTUME PENDANTS

Ch'ien Lung Period.

- a. Tablet form, daintily carved with peach tree in fruit on bank of stream, reverse incised with a Taoist poem. Jade of an almost snow-whiteness, depending from a coral drop.
- b. Tablet form, finely enriched with vines and clusters of grapes; reverse holds a seal.

435 TWO JADE COSTUME PENDANTS

Ch'ien Lung Period.

Cartouches, supported by two curious scrolled monsters, delicately carved in low relief with sprays of peaches, butterflies and birds. Fine creamy mutton-fat jade depending from rose crystal drops.

436 FOUR CHARMING JADE CUPS

Ch'ien Lung Period.

Finely worked, almost to an eggshell thinness. Jade with the rare markings of moss agate in greens, warm browns, pale yellows and creamy-white. (One with rock flaw.)  
*Height 2½ inches.*

437 TWO MINIATURE JADE SCREENS

Ch'ien Lung Period.

Circular medallions of pierced and carved creamy-white jade, one depicting mandarin ducks near the banks of a stream, the other, two Court Ladies. Set in carved wood stands.

- 438 **ROCK CRYSTAL BOWL**  
Ch'ien Lung Period.  
Oval, with small rimmed neck and foot enriched with three crabs in full relief. Blackish, smoky rock crystal ranging to a white with an amethyst tint. Has carved wood stand. *Height, 3 inches; width, 6 inches.*
- 439 **BEAUTIFUL AGATE FIGURE**  
Ch'ien Lung Period.  
Mandarin duck in sitting attitude. Pellucid, cloudy-grey and pearl-blue agate of rare quality. Has carved wood stand. *Height, 5 inches; width, 4½ inches.*
- 440 **ROCK CRYSTAL BOX AND COVER**  
Ch'ien Lung Period.  
The egg-shaped body of a swimming duck forms the box and cover, the duck holds a trailing branch of a water-plant in its bill; clear, luminous rock crystal. Has carved wood stand. *Height, 3½ inches; width, 3½ inches.*
- 441 **TWO MINIATURE JADE TABLE SCREENS**  
Ch'ien Lung Period.  
Carved and pierced, creamy-white jade medallions set in inlaid wood frames; one, a curious horned monster under fir trees, the other, two Fu-lions sporting with a brocade ball amid scrolled cloud forms. Have carved wood stands.
- 442 **ROCK CRYSTAL GROUP**  
Ch'ien Lung Period.  
Two standing mandarin ducks in close proximity, have torn from a pond, sprays of lilies which they hold in their beaks. Clear rock crystal, one leaf holds curious black mottlings like sand held in suspension. Has carved wood stand. *Height, 4 inches; width 5½ inches.*
- 443 **ROCK CRYSTAL WINE POT AND COVER**  
Ch'ien Lung Period.  
Flattened sloping body with incurving neck, the spout formed of a weird dragon whose wings enhance the body

of the pot, fine double scrolled handle, incurving dome cover with terminal of a standing lizard-like dragon. Lustrous, clear rock crystal. Has carved wood stand. *Height, 4 $\frac{1}{4}$  inches; width, 6 $\frac{1}{2}$  inches.*

444 BRILLIANT CLEAR ROCK CRYSTAL GROUP

Ch'ien Lung Period.

Recumbent ram and its young. Archaic in treatment. Ram's head pierced from suspension. Has carved wood stand. *Height, 2 $\frac{1}{2}$  inches; length, 3 $\frac{1}{2}$  inches.*

445 BEAUTIFUL JADE BOWL AND COVER

Ch'ien Lung Period.

Tapering bowl with moulded rim, bell-shaped cover with medallion terminal. Elaborately pierced and carved with mythical dragons amongst lotus and peony scrolls. Creamy grayish-white jade with slight, rust-colored markings. Has carved wood stand. *Height, 6 $\frac{1}{2}$  inches.*

446 ROCK CRYSTAL GROUP

Ch'ien Lung Period.

A ram and its mate with their young, closely grouped in recumbent attitudes. Brilliant, deep, clear rock crystal. Has carved wood stand. *Height, 3 inches; width, 4 $\frac{1}{2}$  inches.*

447 AGATE FIGURE

Ch'ien Lung Period.

Standing figure of the Sacred Horse. Firm archaic handling. Very remarkable color of soft, warm creamy-yellow in which occurs a serrated, light blue patch exactly in the position of saddle. Has carved wood stand. *Height, 6 inches; length, 6 $\frac{1}{2}$  inches.*

448 LAPIS-LAZULI GROUP

Ch'ien Lung Period.

“A Fu-lion and its playful cub.” Virile modelling invested with amusing archness. Full toned mottled blue, gray mottlings on the cub. Has carved wood stand. *Length, 6 inches.*



LARGE ROCK CRYSTAL GROUP

[ NUMBER 478 ]

UNIQUE ROCK CRYSTAL VASE SMOKED ROCK CRYSTAL VASE

[ NUMBER 469 ]

[ NUMBER 466 ]





449 UNIQUE AGATE GROUP

Ch'ien Lung Period.

Swimming mandarin duck and duckling. The duck of blue agate with a milky-white area which extends into crystal and forms the duckling. Has carved wood stand. *Length, 6½ inches.*

450 CURIOUS ROCK CRYSTAL FIGURE

Ch'ien Lung Period.

Recumbent cat with bee in her mouth. The cat of rare black rock crystal with yellow amber eyes, the bee of milky-white crystal. Has carved wood stand. *Length 5¾ inches.*

451 ROCK CRYSTAL FIGURE

Ch'ien Lung Period.

Sure and direct modelling. A Lohan attired in simple robes, seated with legs crossed under him, a scroll in his right hand. Beautiful lustrous clear rock crystal. Has carved wood stand. *Height, 6 inches.*

452 AGATE FIGURE

Ch'ien Lung Period.

Finely poised standing rooster, with large, drooping tail. Interesting smoky-gray and pink agate, carnelian eyes. *Height, 5 inches; width 5¼ inches.*

453 ROCK CRYSTAL FIGURE

Ch'ien Lung Period.

Mandarin duck standing with head turned back over its body and a large pond-lily spray in its bill which trails on to its back. Clear rock crystal of fine texture. Has carved wood stand. *Height, 2¾ inches; width, 6¼ inches.*

454 JADE TRIPOD AND COVER

Ch'ien Lung Period.

Bowl-shaped, wide open throat and rim holding two upright lug handles, enriched with incuse banding of facing dragons, supported on three high stump feet. Dome cover with dragon banding and rosetted terminal. Deep sea-green jade. Has carved wood stand. *Height, 4¾ inches.*

455 BEAUTIFUL AGATE FIGURE

Ch'ien Lung Period.

Well posed standing rooster with large, drooping tail. Delightfully marked with mottlings of rich red, soft gray and white. Has carved wood stand. *Height, 5 inches; length, 7 inches.*

456 ROCK CRYSTAL FIGURE

Ch'ien Lung Period.

Swimming mandarin duck with large branch of pond-lilies in its bill. Clear, translucent rock crystal of fine texture. *Height, 3¼ inches; width 5½ inches.*

457 AGATE GROUP

Ch'ien Lung Period.

Standing "Kuan Yin," attired in flowing embroidered robes, a lotus spray in her right hand, beside her on a rock is a votive tripod. Warm blackish-brown agate. Has carved wood stand. *Height, 8½ inches.*

458 CHARMING JADE BOWL

Ch'ien Lung Period.

Slightly flaring lip, finely worked to almost eggshell thinness. Exterior enriched with charming low relief gadroons, terminated by dainty leafage at lip and foot. Clear and milky-gray agate with iridescent marking of a delicate moss agate character. Has carved wood stand. *Diameter, 4⅝ inches.*

459 ROCK CRYSTAL GROUP

Ch'ien Lung Period.

"A Fisherman exhibiting his famous catch." Standing with bamboo rod in his right hand, the line falling behind him, and holding a newly caught fish, his large hat slung over his left shoulder, he holds a large fish in his left hand and is depositing it in a basket which stands before him; a small boy holds on to the basket and looks up in evident anticipation. Clear rock crystal of remarkably fine texture. Has carved wood stand. *Height, 7 inches.*



GILDED BRONZE VASE

[ NUMBER 472 ]

JADE FLOWER GARDEN  
IN CLOISONNÉ JARDINIÈRE

[ NUMBER 468 ]

JADE FLOWER GARDEN  
IN CLOISONNÉ JARDINIÈRE

[ NUMBER 468 ]



460 CARVED WOOD AND IVORY BASKET OF  
FLOWERS

Ch'ien Lung Period.

Hexagonal, on scrolled foot, deep pierced and scrolled flange rim enriched with a ju-i band in chased and gilded bronze. The many panels hold "Bats of Happiness," the Shou mark, marmol points and sprays of flowers in carved ivory slightly tinted with colors. The upright scrolled handle is of gilded bronze. Many growing flowers are in the basket formed of various-colored jade, agate, rock crystal and coral. *Height, 21 inches.*

461 RARE ROCK CRYSTAL VASE AND COVER

Ch'ien Lung Period.

Flattened ovoidal shape, dome covered with open strap scroll handle over and through which crawls a lizard-like dragon with bifurcated tail. (Slight fracture at lip.) The body sustains another and similar dragon and a bird, both in the round, and freely undercut, cloud and water formations and flower sprays. At the foot and neck are key-fret bandings, and above the shoulder is a series of leaves and two Fu-lion heads with strap terminations from which depend link-chain rings cut from the solid mass of clear, lustrous rock crystal. Has carved wood stand. *Height, 9 $\frac{3}{4}$  inches.*

462 BEAUTIFUL JADE BOWL OF FLOWERS

Ch'ien Lung Period.

Green translucent jade bowl enriched with delicate radiating gadroons, holding two branches of tree peonies with fine green jade leaves, the flowers of brighter green with coral stamens, another flower is of beautiful pink rock crystal, behind these rises a gilded bronze stem holding white jade magnolia blooms, carnelian and other flowers. *Total height, 1 foot 7 inches; diameter of bowl, 7 inches.*

463 ROCK CRYSTAL FIGURE

Ch'ien Lung Period.

Parrot standing on a peony branch. Rock crystal of an amethyst hue with interesting brown hair-line markings.

Has carved wood stand. *Height, 4 $\frac{3}{4}$  inches; width, 6 inches.*

464 JADE POT-POURI JAR AND COVER

Ch'ien Lung Period.

Bowl-shaped, on short expanding foot. Two dragon-head handles with loose rings cut from the solid. Foot enriched with leaf band, body divided by dentated ridges into panels holding archaic scrolled monsters. Dome cover with rosetted terminal of delightful open-work carved band of floral scrolls, weird monsters and the Shou mark. Deep sea-green jade with delightful fir-tree markings. Has carved wood stand. *Height, 4 $\frac{1}{2}$  inches; width, 5 $\frac{3}{4}$  inches.*

465 BEAUTIFUL JADE VASE AND COVER

Ch'ien Lung Period.

Flattened ovoidal shape with incurving neck which supports a banding of scroll spear-shaped panels. Two dragon-head and strap handles, and key fret band on rim; expanding foot. Both sides of body panelled and daintily enriched with incuse arabesques, lotus scrolls and dragons. Dome covered with similar enrichment and plain moulded terminal. Charming deep sea-green jade with slight fir-tree markings. Has carved wood stand. *Height, 10 $\frac{3}{4}$  inches.*

466 RARE ROCK CRYSTAL VASE AND COVER

Ch'ien Lung Period.

Bulbous shape with incurving neck, simulating basket-work over which in open and full relief are numerous crabs and a coiled rope. Dome cover matching with crab terminal. Unusual smoked, bluish rock crystal with delicate prismatic amber-toned areas. Has carved wood stand. *Height, 8 $\frac{1}{4}$  inches. [Illustrated.]*

467 RARE JADE FLOWER RECEPTACLE

Ch'ien Lung Period.

In the form of a cusped double magnolia, broadly modelled. Deep green jade of a pellucid quality. Has carved wood stand. *Height, 6 inches.*





ROSE ROCK CRYSTAL VASE

[ NUMBER 476 ]

ROCK CRYSTAL FIGURE

[ NUMBER 471 ]

AGATE GROUP

[ NUMBER 470 ]



468 TWO FLOWER GARDENS IN CLOISONNÉ JARDINIÈRES

Ch'ien Lung Period.

Jardinières, oblong, bell-shaped, finely enamelled with lotus sprays and scrolls in brilliant colors on a turquoise-blue ground, lip with key-fret and band of interlacing floral scrolls. The pot is planted with a great variety of flowers and fruit amongst which hover butterflies and tiny squirrels gambol. The leaves are of fine fir-tree green jade, the flowers are variously executed in lapis-lazuli, brilliant red spinose corals, milky-white jade, amber-toned agate, carnelian, and rock crystal of clear white, amethyst and rose. Have carved wood stand. *Total height, 1 foot 6½ inches; width of jardinière, 10 inches.*

[*Illustrated.*]

469 UNIQUE ROCK CRYSTAL VASE AND COVER

Ch'ien Lung Period.

Ovoid, with slightly flaring neck and short foot. Innumerable Fu-lions playing with the brocade ball finely cut out of the solid mass in full relief, enrich the surface. High incurving dome cover with terminal of Fu-lion in relief. Rare, clear pinkish-amethyst rock crystal with an abundance of hair-line markings. Has carved wood stand. *Height, 9¾ inches.*

[*Illustrated.*]

470 INTERESTING AGATE GROUP

Ch'ien Lung Period.

“Ho Hsien Ku,” one of the eight Taoist Immortals, carrying her magic wand, stands and leans forward looking at a phoenix which holds a spray of flowers in its beak. Delightful, pearly-gray and bluish agate with occasional rich rust-red areas. Has carved wood stand inlaid with silver wire. *Height, 8 inches.*

[*Illustrated.*]

471 CURIOUS ROCK CRYSTAL GROUP

Ch'ien Lung Period.

“Li Tieh Kuai,” one of the eight Taoist Immortals. Crouching, mendicant figure holding the stem of a large

gourd on which he rests himself. Most unusual rock crystal ranging from jet black on the crown of the figure's head to milky-gray at the base. Has carved wood stand. *Height, 8 inches; width, 6 inches.*

[*Illustrated.*]

472 ELABORATE GILDED BRONZE VASE OF  
FLOWERS

Ch'ien Lung Period.

Circular body of oblong section with incurving neck and base on moulded and scrolled foot. On the shoulder are two well moulded phoenix heads and ring handles with interesting scroll terminations. Centre medallion, a basket of jewelled flowers in slight relief. Base and neck enriched with similar floral panels. A branch of tree peonies springs from the vase, holding three luxuriant blossoms, one of light sea-green jade with coral stamen, another of rarely fine deep amber and milk-white agate, while the third flower and a bud are of varied pink rock crystal with numerous seed-pearl stamen, the leaves are of fine sea-green fir-tree jade, *Complete height, 21 inches.*

[*Illustrated.*]

473 LARGE ROCK CRYSTAL VASE, COVER AND  
FLOWER RECEPTACLE

Ch'ien Lung Period.

Flattened pear-shape vase, dome cover with hollow rustic terminal. Over the vase, in high relief and undercut, is a weird dragon-monster amongst cloud forms; balancing the dragon and forming the receptacle, is a large fish cut in the round. A remarkably large mass of lustrous clear rock crystal with a few markings resembling internal fractures in ice. Has carved wood stand. *Height, 10 $\frac{3}{4}$  inches; width, 9 $\frac{1}{2}$  inches.*

474 LACQUER JARDINIÈRE OF LILIES

Ch'ien Lung Period.

Elongated four-lobed jardiniere on ju-i feet. Each side holds a lobed medallion which displays the Shou mark in circular form surrounded by floral scrolls, on the back-

ground are trailing gourd and flowering vines. Rich brown background enhanced with colors and gilding. From the jardiniere rise three stems of milk-white jade lilies with ruby-colored centres, these are surrounded by many gilded bronze lance-like leaves. *Total height, 1 foot 6 inches; width of jardiniere, 11½ inches.*

#### 475 UNIQUE ROCK CRYSTAL GROUP

Ch'ien Lung Period.

Sea-horse and sea-lion rising from the waves. Oval, openwork cradle-like form modelled with a rare swing and vigor and fine restraint. The animals face each other with their bodies curving on the sides and forming the back. The lion of translucent clear and smoked rock crystal varying from a pale amber to an amethyst tone, the horse a milky-gray resembling jade in character. Has carved wood stand. *Height, 6 inches; width, 9 inches.*

#### 476 BEAUTIFUL ROSE ROCK CRYSTAL VASE AND COVER

Ch'ien Lung Period.

Tall ovoidal form with slightly expanding neck. Over the body, cut and undercut from the solid mass, are coiled dragon-monsters and phoenix amongst rare growths of tree peonies which spring from a rocky base. High dome cover on which rests a sleeping phoenix. Delightful translucent rose-pink rock crystal, clear in tone. Has carved wood stand. *Height, 13½ inches.*

[*Illustrated.*]

#### 477 JADE GROUP

Ch'ien Lung Period.

"The Eternal Combat of the Earth and Air." On a recumbent Fu-lion an eagle has descended. Firm archaic modelling. Lustrous deep green jade of rare texture. *Height, 5 inches.*

#### 478 NOBLE ROCK CRYSTAL GROUP

Ch'ien Lung Period.

Two long-tailed parrots are perched on a high rockwork which is occupied at its foot by a Fu-lion. Very broadly

modelled. Clear translucent rock crystal. Has carved wood stand. *Height, 12 inches; width, 9 inches.*

[*Illustrated.*]

479 GRACEFUL JADE HANGING VASE AND COVER  
Ch'ien Lung Period.

Flattened oval, incurving neck and foot with flat rims. The obverse finely carved with a lizard-like dragon in full relief, the reverse with incuse sprays of prunus. The incurving dome cover is caught by a long link-chain which is held at the other end in the dragon's mouth. On the shoulder are two foliated scrolled loop handles from which rise two link-chains terminating in a bar handle. All of these chains, cover and handles are cut from the solid mass of jade which is of exquisite texture and a fine milky gray-green color. Has small carved wood stand and is hung in an arched, scrolled, larger stand. *Total height of vase and handle, 8½ inches.*

479\* REMARKABLE JADE BASKET OF FLOWERS

Ch'ien-lung. Bowl-shaped body of open scrolls and flowers in creamy grey jade; on octagonal base, supporting an upper portion of gilded bronze scrolls enriched with Kingfisher plumes; wide octagonal flanged rim, set with radiating panels of fir-tree jade interspersed with carved scrolled panels of cream jade; double rim in gilded bronze set with semi-precious stones and filets of finely carved cream jade. Gilded bronze upright scrolled handle. A multiplicity of flowers in carnation jade and agate fill the ornate basket. (Slight defects.) *Height, 1 foot 3½ inches.*

## POTTERY AND CARVED STONE OF THE HAN, T'ANG AND SUNG DYNASTIES

480 POTTERY ANIMAL STATUETTE

T'ang Dynasty.

Highly conventionalized and strongly modelled Kylin seated on its haunches, two masks appear on its front shoulders. Most interesting glaze of yellowish-cream, with earthy incrustation. *Height, 12¾ inches.*





LARGE POTTERY WINE JAR

[ NUMBER 485 ]

481 POTTERY BOWL, JUG AND TWO CUPS

T'ang Dynasty.

Conventional shapes, mostly glazed inside and out, with markings of browns, creams and greens, bearing a slight resemblance to tortoise-shell. Have carved wood stands. *Respective heights: 2½ inches, 3¼ inches and 1¼ inches.*

482 TERRA COTTA STATUE

T'ang Dynasty.

Standing figure of "Kuan Yin," the Goddess of Everlasting Mercy and Motherhood. Attired in voluminous robes which are close to the breast and are encrusted thereon with numerous ornaments of gilded bronze, white marble and red glass; high conical coiffure, and a tiara on which are gilded bronze enrichments. (Neck repaired, one hand missing.) *Height, 2 feet 8 inches.*

483 POTTERY BEAKER

Han Dynasty.

Quadrilateral; inverted pear-shape with outcurving throat, square banded lip, high spreading foot. Decorated with one flat rudimentary T'ao-t'ieh ogre-head and ring handle. Invested with blackish-brown mat-glaze to simulate bronze. Has carved wood stand. *Height, 10½ inches.*

484 INTERESTING POTTERY DISH

Tang Dynasty.

Low, small bowl, left in the cream biscuit; supported by a wide, turned-over circular flange and five spreading scroll feet holding the T'ao-t'ieh ogre-head at knee and glazed in apple-green. The flange is incised with half-rosettes and intervening petals, and is glazed in rare apple-green, fine yellow, white and aubergine. *Height, 3 inches; width, 7 inches.*

485 LARGE POTTERY WINE JAR

Sung Dynasty.

Ovoidal, with straight, wide-open, moulded mouth. At the base, a wide banding of reeded ribs; enriched with

three lozenge-shaped medallions with cloud forms in the intervals, the medallions holding karakos playing various games, blindman's-buff and rounders. Below is a scroll banding and above a very elaborate band holding peony blossoms and beautiful leaf scrolls. The decoration is in rich and varying browns on a cream-white glaze. The interior glazed in brown, decorated with rosette and cloud scrolls. (Foot repaired.) Has carved wood stand. *Height, 2 feet 7 inches; diameter, 1 foot 10 inches.*

[*Illustrated.*]

486 STONE BUST OF A LOHAN

Han Dynasty.

Sculptured in dense gray-white stone that has attained a pinkish patina (portion of a temple statue). In sleeping posture, with head resting on his left shoulder and his two upturned clasped hands. Areas with traces of lacquer appear. Set in carved wood base simulating the remaining portion of figure. *Height, 10 inches.*

RARE CARVED JADES OF THE HAN, T'ANG  
AND SUNG DYNASTIES

487. JADE FIGURE.

Sung Dynasty.

An elephant in recumbent attitude, archaic in treatment. Lustrous ebony-colored jade with pinkish-gray markings. Has carved wood stand. *Height, 11½ inches; width, 3½ inches.*

488 AMUSING JADE GROUP

Sung Dynasty.

Two archaic Fu-lions in close proximity in recumbent attitudes. Pearly-gray jade with areas of blackish tone. Has carved wood stand. *Height, 2 inches; width, 2½ inches.*

489 JADE TERMINAL FOR CEREMONIAL STAFF

Sung Dynasty.

Beautiful modelled bird in sitting posture, the feathers and members are treated in a highly conventionalized manner; a pierced and hollow rim sustains the bird,



and under its tail is a wide pierced ring for a cord. Translucent creamy jade with delicate yellowish-brown veinings. Has carved wood stand. *Height, 3 inches; width, 3 $\frac{3}{4}$  inches.*

490 JADE FIGURE

Sung Dynasty.

Horse in recumbent attitude. Archaic modelling of high quality. Interesting greenish-cream jade with large ebony and brown areas. Has carved wood stand. *Length, 4 $\frac{1}{4}$  inches.*

491 CEREMONIAL JADE IMPLEMENT

Sung Dynasty.

Long, rectangular blade, rounded at top corner, imperfect at other. Curiously bored along and near top with four holes. Lower edge and back bevelled on both sides to a sharp edge. Used in sacrificial worship. *Deep green mottled jade of a firm texture. Height, 4 inches; width, 11 $\frac{1}{4}$  inches.*

492 JADE PITCHER

Sung Dynasty.

Oblong section, slightly tapering body, inset foot, short and slightly outcurving, expanding neck, shaped spout, handle in the form of a strapwork scroll terminating in a curious monster's head. Body enriched with band of incise animalistic motives on incised fret-ground. On carved wood stand. *Height, 5 $\frac{1}{2}$  inches.*

493 JADE SEAL

Sung Dynasty.

Rectangular seal, surmounted by a recumbent ram and its two young who are playing over their parent's back. Warm, creamy jade with brown mottling. *Height, 2 $\frac{1}{4}$  inches.*

494 SMALL JADE CUP

Sung Dynasty.

Diamond shape, with straight flaring sides, on short spreading foot. At the corners are dentated ridges;

the panels incised with archaic floral and animalistic motives. Creamy gray jade with blackish veinings. Has brocaded stand. *Length, 3½ inches.*

495 CURIOUS JADE FIGURE

Sung Dynasty.

Seated Fu-lion with head and tail turned over its body. Archaic in treatment. Warm cream-colored jade with veinings of blackish-brown. Has carved wood stand. *Length, 3½ inches.*

496 CURIOUS JADE BRACELET

Han Dynasty.

Plain circular band. Gray mottled jade with ebony areas. (Imperfect.) *Diameter, 3¼ inches.*

497 UNIQUE JADE TSUNG

Han Dynasty.

Tsung used in the Imperial ritual worship of Heaven, Earth and The Four Quarters. Square corners, horizontally ribbed top and bottom, seemingly set on a drum which extends and forms a collar at lip and foot. (Lip imperfect.) Rich yellow and brown jade with lighter veinings. Has carved wood stand. *Height, 2½ inches; width, 3¼ inches.*

498 CURIOUS JADE IMPLEMENT

Han Dynasty.

Implement used in sacrificial worship. Somewhat rectangular with rounded corners, and all edges rounded to an arris edge. Curious rusty-gray jade with many green areas. *Height, 3½ inches; width, 6 inches.*

499 JADE BRACELET

Han Dynasty.

Circular band with rounded edges. Incuse enrichment of quaint animalistic motives rising amongst clouds from wave forms. Light sea-green jade with darker areas of mottled gray and blackish-green. *Diameter, 3¼ inches.*

- 500 JADE SUAN-KI  
Han Dynasty.  
Suan-Ki, astronomical instrument used for calculations. Almost circular, formed of three cogged discs, circular opening in centre. Velvety brown and tan jade of exceptional texture. Has carved wood stand. *Diameter, 3½ inches.* (See Laufer on Jade, Page 105, Fig. 36.)
- 501 BEAUTIFUL JADE BRACELET  
Han Dynasty.  
Plain, circular, broad band. Rare, cloudy sea-green jade melting into a warm pinkish-gray, finely mottled with clear gray. Has carved wood stand. *Diameter, 3½ inches.*
- 502 RARE JADE VASE  
Sung Dynasty.  
Flattened ovoidal form on short spreading foot, long neck with moulded rim supporting two open scroll handles. On each face is a large delicately lobed medallion holding entwining sprays of lotus blossoms, finely cut and pierced. Minutely mottled gray-white jade of rare texture. Has carved wood stand. *Height, 5½ inches.*
- 503 CEREMONIAL JADE BRACELET  
Han Dynasty.  
Circular band, enriched with weird low relief dragon-monsters with bifurcated tails. Rich, warm cream jade deepening to a reddish-brown. Has carved wood stand. *Diameter, 2¾ inches.*
- 504 CEREMONIAL JADE PI  
Han Dynasty.  
Pi representing Heaven, used in the Imperial ritual worship of Heaven, Earth and The Four Quarters. Spherical, of oval section, with open centre; carved on both sides with a weird coiled dragon-monster swallowing its own tail. Archaic scrollings define the monster's back, and key-fret brocade the scales. Pale blue-gray jade with warm lighter notes and darker areas. *Diameter, 4 inches.*

505 JADE GROUP

Sung Dynasty.

Two swimming swans in close proximity, their necks and heads are turned over their bodies and almost touch; one holds a spray of ripe peaches in its bill, the other holds a similar branch with one of its feet. Lustrous pearly-gray jade in one bird, warmer and yellow tone in the other. Has carved wood stand. *Height, 2¼ inches; length, 4½ inches.*

506 RARE JADE COUPE

Sung Dynasty.

Square, with slightly tapering sides, a plain square bar crosses the centre. At the sides are square loop handles with L-pendants, each supports a weird coiled dragon-monster cut free and clear of handle and cup in parts, and rests its two front claws on the lip of the cup. Lustrous pearly-gray mottled jade with areas heightened to a warm yellow and brown. Has carved wood stand. *Height, 2½ inches; length, 5¼ inches.*

507 CEREMONIAL JADE KUEI

Han Dynasty.

Kuei representing East Quarter, used in the Imperial ritual worship of Heaven, Earth and The Four Quarters. Spear-shaped V-front, quaintly carved with cloud forms from which springs a zigzag holding various members of the constellation at the angular points. Lustrous, deep-mottled green jade of intense texture. *Length, 10½ inches.*

508 JADE COUPE

Sung Dynasty.

Bowlshape with short foot, banded with incised key-fret at the lip. Two weird dragons with head and front claws clutching the rim, form loop handles, their bifurcated tails spread to either side of bowl. Extraordinary mottled tan, cream and yellow jade, the interior resembling ashes-of-roses in color. Has carved wood stand. *Height, 2¼ inches; width, 4¾ inches.*

509 JADE VASE

Sung Dynasty.

Inverted pear shape, on short spreading foot, slightly expanding long neck, two animalistic scroll handles. The body enriched with incised flower sprays of an archaic character. (Lip imperfect.) Gray-white jade with warm brown and green markings. Has carved wood stand. *Height, 7 inches.*

510 CEREMONIAL JADE KUEI

Han Dynasty.

Kuei, representing East Quarter, used in the Imperial ritual worship of Heaven, Earth and The Four Quarters. Flat, elongated form with pointed end, on one side part of the constellation is depicted by incised angular lines, and circular discs in the typical Han manner. Deep green jade with creamy-white and lighter green veinings. *Length, 10 inches.*

511 CEREMONIAL JADE SYMBOL

Han Dynasty.

Huan. Symbol used in the Imperial ritual worship of Heaven, Earth and The Four Quarters. Flat circular disc with round open centre. Remarkable chicken-blood red jade with grayish-cream mottling. (See Laufer on Jade, page 167.) *Diameter, 7 inches.*

512 JADE TSUNG

Han Dynasty.

Tall, square-sectioned emblem with dentated corners. Lip and foot almost circular with tubular opening. Beautiful reddish jade with black, gray and cream veinings. (See Laufer on Jade, page 131.) Has carved wood stand. *Height, 4¼ inches.*

513 UNIQUE JADE FIGURE

Sung Dynasty.

Half seated yelping Dog-Foo. Archaic modelling of strong character. A T'ao-t'ieh ogre-head is displayed on its breast, the uplifted head is loose, and the interior of animal's body forms a receptacle. Warm cream jade with rich brown and black veinings. Has carved wood stand. *Height, 8 inches; width, 8 inches.*

- 514 CEREMONIAL JADE BRACELET  
Han Dynasty.  
Plain, circular band. Creamy jade with remarkable brown fir-tree markings, of unctuous texture. Has carved wood stand. *Diameter, 3 inches.*
- 515 JADE GROUP  
Sung Dynasty.  
Two recumbent figures of an antelope and a fawn. The Fawn with head over its back, holds in its mouth a trailing flower spray, the other end held by the antelope. Has carved wood stand. *Height, 2¼ inches; length, 5½ inches.*
- 516 JADE KANG T'OU  
Han Dynasty.  
Wheel knave. Almost square-sectioned, with circular collar at lip and foot. Uniquely veined, warm pale gray jade with ebony areas, of an unctuous texture. Has carved wood stand. *Height, 3¼ inches.*
- 517 INTERESTING JADE ANIMAL  
Han Dynasty.  
The Divine Tortoise, "Shên Kuei." Back of brocaded lozenges and head in the form of a ferocious dragon. Head and tail pierced for suspension. Dense, blackish-brown jade. *Length, 2½ inches.*
- 518 CEREMONIAL JADE HUANG  
Han Dynasty.  
Huang used in the Imperial ritual worship of Heaven, Earth and The Four Quarters. Long flat instrument with rounded end, front turned over to a sharp edge. Pierced at four points. Lustrous nut-brown jade of rare character. *Length, 13½ inches.*
- 519 UNIQUE JADE COUPE AND COVER  
Sung Dynasty.  
Bowl shape, with short spreading foot, slight incurving neck with square rim. Two peonies in full bloom are on the lip and are supported on rustic open sprays.

Broad, bell-shaped cover with large, circular medallion terminal. The body, cover and terminal are elaborately pierced and carved with interlacing sinuous scrolls of lotus flowers. Pearl-gray jade with rich brownish and black markings. Has carved wood stand. *Height, 5¼ inches; width, 8¼ inches.*

520 JADE GROUP

Sung Dynasty.

Two recumbent horses, one with its head on the haunches of the other. Curious, gray clay-color jade with black areas. Has carved wood stand. *Length, 6 inches.*

521 JADE LIBATION CUP

Sung Dynasty.

Flaring sides on short straight foot. Two archaic animalistic head and loop handles. Lustrous ebony-colored jade of very beautiful texture with small gray areas. Has carved wood stand. *Height, 2½ inches.*

522 JADE GROUP

Sung Dynasty.

“Sea-lion rising from the waves.” Archaic modelling, almost in the round. The waves and organs are delightfully conceived as scrolled masses, this gives a rare decorative quality to the group. Blackish-brown jade with cream-colored areas. Has carved wood stand. *Height, 4 inches.*

523 TWO DAINY JADE LIBATION CUPS

Sung Dynasty.

Low bowl-shaped, with moulded rims and short expanding feet. Two dolphin-like scroll handles; carved with very delicate bands in minute relief of landscapes and figures. Lustrous rich gray jade finely etched with brown veinings. Have carved wood stands. *Length, 4 inches.*

524 IMPORTANT IMPERIAL JADE SEAL

T'ang Dynasty.

Seal of the Emperor Cheng-Kuan. Rectangular, surmounted by a five-clawed wonderfully coiled dragon-

monster of ferocious aspect. Warm creamy jade with delicate patina. Set in carved wood stand and elaborately carved box cover. *Height, 3½ inches; width, 3¼ inches.*

#### 525 INTERESTING JADE FIGURE

Sung Dynasty.

A large-bellied elephant with head turned, facing and lowered almost to the ground, carries on its back two peaches and a spray of flowers. Powerful modelling of the highest archaic type. Exceptional jade of a pearly-gray texture with large and effective areas of ebony black. Has carved wood stand. *Height, 4 inches; length, 6 inches.*

[*Illustrated.*]

#### 526 UNIQUE JADE BELL

Han Dynasty.

Flattened oval section, slightly flaring rounded shoulder, incurvate base. Moulded collar pierced for hanging and bored and tapped for a screw, evidently for a handle. Enriched on both shoulders with T'ao-t'ieh ogre-heads in relief. On both sides the body is divided by small ridges into three vertical panels, the flanking panels divided horizontally into five small panels alternately holding key-fret and marmol points. Under is a horizontal, full width panel holding facing animalistic scrolls. Translucent, sea-green jade with areas resembling tortoise-shell. Has carved wood stand. *Height, 6½ inches; width, 5 inches.*

[*Illustrated.*]

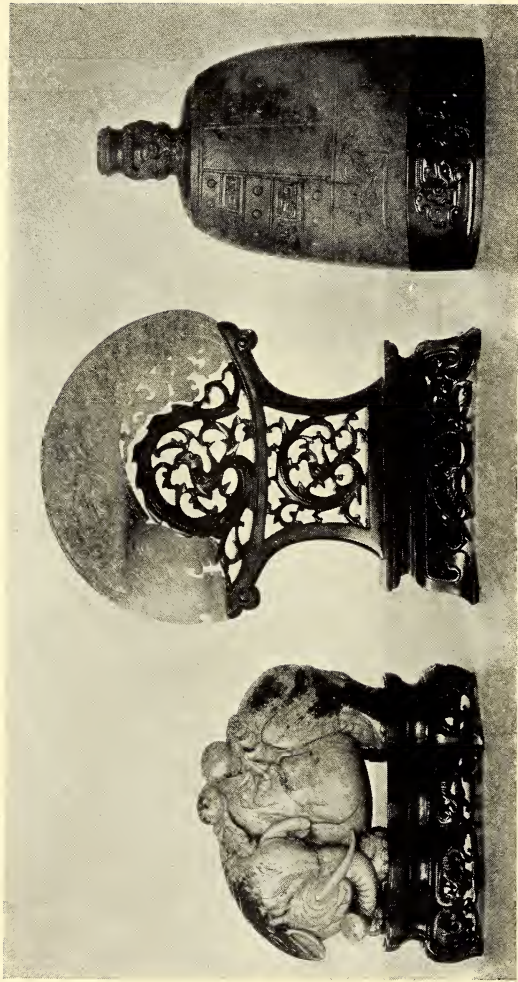
#### 527 CEREMONIAL JADE SYMBOL

Han Dynasty.

Pi, representing Heaven, used in the Imperial ritual worship of Heaven, Earth and The Four Quarters. Flat, circular disc with round opening in the centre. Delightful gray jade with areas of a greenish cast, smooth dull texture. *Diameter, 9¼ inches.*







CEREMONIAL JADE JU-I

[ NUMBER 530 ]

JADE ELEPHANT

[ NUMBER 525 ]

UNIQUE JADE BELL

[ NUMBER 526 ]

528 CEREMONIAL JADE SYMBOL

Han Dynasty.

Kuei pi. Symbol used in the Imperial ritual worship of Heaven, Earth and The Four Quarters. Spear-shaped with V-front on which is implanted a rimmed, hollow, circular disc displaying the symbols of the eight points of the compass, at the foot of the staff is a bold, high rock rising in its strength from wave forms; reverse is marked with angular lines with small disc at the intersections symbolising part of the constellation. Warm brown jade with erosion. *Length, 12½ inches.*

529 IMPERIAL JADE SEAL

Han Dynasty.

Seal of the Emperor "Kuang-Wu," founder of the Eastern Dynasty, A. D. 57. Seal reads "Kuang-Wu, Yu Pao." Rectangular, surmounted by a wonderful double-headed dragon-monster of ferocious aspect, seated both ways on his haunches. Very virile modelling. Mottled green jade of lustrous quality. Has brocade stand. *Height, 3¼ inches; width, 4½ inches.*

530 CEREMONIAL JADE JU-I

Han Dynasty.

Ju-i used in the Imperial ritual worship of Heaven, Earth and The Four Quarters. Somewhat blunted crescent-shaped disc, incuse enrichment similar on both sides, a dragon-monster's head with scrolled body holding on the inner side open scrolls and a smaller coiled dragon. Soft pinkish-cream jade with russet areas ranging to greenish-cream at the head. Has carved wood stand. *Length, 6½ inches.*

[*Illustrated.*]

## PAINTINGS OF T'ANG, SUNG AND YUAN DYNASTIES

In China, the Japanese terms, *Kakemono* and *Makemono*, are almost unknown. The Chinese equivalents for these, varying, as they do, for sizes, have been employed in this catalogue, namely,—

Very Long Hanging Paintings "Sze-Hou"

Large Hanging Paintings "Chia-Fu"

Medium Hanging Paintings "Chun-Tang"

Small Hanging Paintings "Cha-I"

The Hand Scrolls "Su-Juen"

### 531 PORTRAIT OF A LADY

Sung Dynasty.

Chun-Tang. The Wife of an exalted Mandarin. Seated three-quarter length, clad in crimson robes which conceal her hands, girdle-piece deftly embroidered with flowers and birds; head dressed with high tiara from which depend double ropes of pearls and clusters at each side. On old tan silk. *Height, 2 feet 8 inches; width, 2 feet.*

### 532 MANDARIN DUCKS AND FLOWERS

Sung Dynasty.

Cha-I, by "PIAN-LU'AN." The beautiful mandarin ducks (symbols of love and constancy) are disporting themselves in a small pond; on the further rocky bank is a luxuriant growth of beautiful white lilies, tree peonies in pink and crimson and small hardy carnations. Two yellow hammers gaily sing in the upper branches of the tree peony. A typical Chinese wedding anniversary gift. Rich in color in tan silk ground. *Height, 4 feet 7 inches; width, 1 foot 11 inches.*

### 533 RUGGED TREES AND HIGH ROCKS

Sung Dynasty.

Chun-Tang, by SHA-KUEI. An old and gnarled tree climbs round a high rock, in the upper branches part of a flock of birds are fluttering, while the remainder are swiftly flying to join them. Executed in black on tan silk. *Height, 4 feet 10 inches; width 2 feet 2 inches.* Signed at lower left.



BOY WITH PET RAM

By SOU-HAN-CHIN

[ NUMBER 561 ]



534 PORTRAIT OF LO-SU-TAO

Yuan Dynasty.

Chun-Tang. Bust of the noted statesman. He is presented in crimson habit and high black hat with two curious semi-transparent lobes; facing the spectator, dignified and thoughtful in mien. On old tan silk. *Height, 2 feet 8 inches; width, 2 feet 3 inches.*

At top, long eulogy and seal by the great Ming connoisseur, Kin-lin; at base, further appreciation by a Ming authority. In ancient China an artist never signed a portrait and that curious custom still prevails today.

535 LANDSCAPE

Yuan Dynasty.

Cha-I, by WU-CHONG-KUI. A rushing torrent descends from the rocky mountains in the distance, into a pleasant wooded vale, where it tumbles over a waterfall into a shaded pool on whose banks a personage is strolling. Executed in black on tan silk. *Height, 3 feet 8 inches; width, 1 foot 4 inches.*

Signed and dated at upper right.

536 KUAN YIN ENTHRONED ON LOTUS LEAVES

Sung Dynasty.

Cha-I, by CHOU-WEN-K'UEI. The Goddess of Mercy and Motherhood, in voluminous robes, high coiffed and cowed head-dress, holds a rosary in her right hand, and beside her on the right is a vase of flowers. The naturalistic treatment of her flowing locks which fall over her shoulders, is extremely interesting. In low tones and white on tan silk. *Height, 2 feet 4 inches; width, 1 foot 9½ inches.*

Signed lower left. Several laudatory and collectors' seals, including that of an Empress, and Hang-mo-bu, a great collector of the Ch'ien Lung Period.

537 PU-YEN CARRYING A LION CUB

Yuan Dynasty.

Cha-I. The weather-beaten devotee with his gourd slung on his back, carefully carries the diminutive cub in his two hands. Executed in black with slight tinting, on tan silk. Title is in ideographic characters at upper right. *Height, 4 feet 1 inch; width, 1 foot 9 inches.*

Many appreciative seals, among them that of Fong-T'su Chin, a great collector, from whose estate this painting was acquired by Mr. Wong.

538 THE DRAGON RIDE OF THE GENII

Yuan Dynasty.

Chun-Tang. The fabulous sea-dragon carries on its back, "Chung-Li-Ch'uan" (one of the Eight Taoist Immortals), and the two genii of Harmony, through the rough, heavy sea to the rocky foreground; over the distant mountains hover red bats, symbols of happiness. In dull rich colors on deep tan silk. *Height, 4 feet 6 inches; width, 2 feet 9 inches.*

539 THE TWO WARRIORS

Yuan Dynasty.

Chun-Tang. Two powerful young men of action clad in magnificently embroidered robes of state, stand in close proximity, one slightly in front of the other. The crimson robes of the figure in the rear, are well balanced by the crimson introduced into the yellow robes of the nearer figure. A noble piece of decoration. *Height, 5 feet 1 inch; width, 2 feet 8 inches.*

540 THREE WHITE HERON

Yuan Dynasty.

Cha-I. The birds are grouped in a shaded pool, feeding to their hearts' content; on the banks of the pool grow tree peonies in beautiful blossom. In soft colors on old tan silk. *Height, 3 feet 6 inches; width, 1 foot 10 inches.*

541 CONNOISSEURS EXAMINING PAINTINGS

Sung Dynasty.

Chin-Tang, by MA PAN. On a pleasant balustraded terrace shaded by trees, several exalted mandarins are seated and standing, critically examining a painting which an attendant holds up before them, and in the foreground a little servitor brings an armful of other scrolls; beyond is a table spread with various art objects from which the master is selecting some special treasures. Two attendants in the background are bringing in for inspection, further objects. Executed in low tones on tan silk. *Height, 4 feet 1 inch; width, 2 feet 5 inches.*



542 THE BLACK RABBIT

Sung Dynasty.

Cha-I, by YI-YUAN-CHE. A black, furry rabbit is feeding on rice that has fallen from the growing plant overhead. Charming, simple drawing, in colors on old tan silk. Two rare narrow mountings of Sung brocade. *Height, 1 foot 11 inches; width, 1 foot 4½ inches.*

543 ONE OF THE NINE WISE OLD MEN

Yuan Dynasty.

Chun-Tang. TAO-YUAN-MING, noted for his love of flowers. The vigorous bearded old man stands facing, attired in voluminous robes that conceal his hands, and a wide-brimmed conical straw hat. A small attendant nearby is carrying over his shoulders on a long bamboo pole, a basket of flowers. Delicately executed in blacks on tan silk. *Height, 3 feet 9 inches; width, 2 feet.*

544 MOUNTAINS AND RIVER

Yuan Dynasty.

Chun-Tang, by WONG-YEN. A cool and pleasant prospect, the river winds from the distant mountains, crossed by an arched bridge in the middle distance; overhung on the right bank with high rocks, trees, and several open pavilions in which are groups of personages. Rich low toned coloring on old tan silk. *Height, 6 feet 6 inches; width 3 feet 9 inches.*

Signed at lower right.

545 THE MAITREYA BUDDHA

Yuan Dynasty.

Chun-Tang, by WEN-MING. The august and smiling Messiah of the Chinese is presented as an obese Chinaman, sitting on a balustraded veranda, clad in loose robes; near him is a jar of lotus blossoms and overhead a fir-tree. In the foreground is a chubby little fairy swathed in loose draperies that flutter in the breeze. Executed in delicate colors on deep cream paper. *Height, 4 feet 4 inches; width, 2 feet.*

Signed and dated at lower right. In top panel are five appreciative seals and various laudatory inscriptions.

546 A GROUP OF LOHANS

Yuan Dynasty.

Cha-I. In a rocky grotto overlooking an expanse of pleasant hilly country, seven of the famous Arhats are seated in various attitudes, some at their devotions and others in meditation, a scholar is deep in his task among them and a tiger is in the foreground paying homage to his patron. The robes of the figures are rich and varied, the intermittent introduction of crimson gives a rich harmony to the composition. Executed on tan silk. *Height, 3 feet 8 inches; width, 1 foot 11½ inches.*

547 THE CAPTIVE LION

Sung Dynasty.

Chun-Tang, by KU-LONG-SUNG. The noble king of beasts is seated on his haunches, head turned toward the spectator; from his throat depends a long chain. On the left is a group of fir-trees and bamboo. Executed in warm tones on old tan silk. *Height, 3 feet 1 inch; width, 3 feet 11 inches.*

548 TWO FISHERMEN

Sung Dynasty.

Chun-Tang, by LI-TANG. From a small jetty, under an old willow-tree that overhangs a lake, two fishermen are busily plying their craft; one has just drawn up an umbrella-like net, while the other works with a small hand net to take out the catch. In low toned colors on deep tan silk. *Height, 3 feet 5 inches; width, 2 feet 3 inches.*

Appreciation and seals of Yao-Yuan-tsi.

549 THE BODHISATVA MANJUSRI ON A WHITE ELEPHANT

Yuan Dynasty.

Chun-Tang. Known to the Chinese as "Wên Chu," a disciple of "Sâkyamuni," and noted for his eloquence and wisdom. Attired in elaborate embroidered robes and much-bejewelled high head-dress, necklace and pendant; seated on a recumbent elephant. Beyond is the rock-bound coast and sea. An unique color scheme,

rich and varied in colors on tan silk. *Height, 5 feet 3 inches; width, 2 feet 9 inches.*  
Seals of Temple donor at right.

550 THE SACRED MOUNTAINS OF THE TAOIST  
PARADISE

Sung Dynasty.

Chun-Tang, by WEI-CHUN. In the foreground is a small bridge over which pilgrims are crossing the winding river; trees and rocks overhang the shores and a boatman plys its surface. In the middle distance under the towering heights of the mountains, are groves of trees and several large palaces and a pavilion. (An expansive landscape.) Executed in black and low tones on tan silk. *Height, 5 feet 6 inches; width, 3 feet 4 inches.*

Signed at lower left.

551 PORTRAIT OF A PAINTER

Sung Dynasty.

Chun-Tang. The contemporary painter, MA-YUAN-CHONG. A thoughtful, bearded figure is seated in a lacquer chair attired in a golden brown, brocade gown over which is a loose, gray robe trimmed with deep black bandings (probably his atelier costume). A youthful attendant in blue, carries a scroll under her arm for her master's inspection. On deep tan silk. *Height, 5 feet 2 inches; width, 3 feet 3 inches.*

552 FU-LION AND PLAYFUL CUBS

Sung Dynasty.

Chun-Tang, by YI-YANG-CHEN. The curious, long curly-haired she-lion is sitting on her haunches, one cub looks up at her in front while the other plays over her back. An amusing scene. Chiefly executed in black, slight tints of blue and red on deep tan silk. *Height, 2 feet 11 inches; width, 3 feet 3 inches.*

Inscribed with title at upper left.

553 ONE OF THE EIGHT TAOIST IMMORTALS

Yuan Dynasty.

Chun-Tang. "Li-Tieh-Kuai," sometimes known as "the bonze with the hempen bag." A long-bearded pleasant

face with small cap on head, garbed as a pilgrim in plain gray habit with girdle ropes of greenish-blue, a hempen bag hanging over his right arm, hands clasped before him. Executed on heavy paper, almost in monotonous of warm gray. A splendid decoration. *Height, 5 feet 9 inches; width, 2 feet 9 inches.*

554 TWO CRESTED CRANES

Yuan Dynasty.

Chun-Tang. The two birds, in their elaborate plumage and crimson crests, are standing in close proximity on high rocky ground, one uttering a piercing note heavenward, the other bending over a small rushing torrent searching for its prey. On the right are two fine fir-trees, and tree peonies in blossom growing over rocks. The details are skilfully painted in colors on deep tan silk. *Height, 5 feet 5½ inches; width, 2 feet 6½ inches.*

555 AN IMPERIAL PALACE

Sung Dynasty.

Chun-Tang, by CHO-SEN-LI. The palace is set amongst high rocks and trees, surrounded by a high sunken balustrade; many pavilions and kiosks are in the pleasant domain; personages are walking in the foreground of the garden and horsemen approach the gates. A delightful color scheme of emerald-green on tan silk. *Height, 4 feet 4 inches; width 2 feet 3½ inches.*  
Long inscription at upper left, signed at lower left.

556 HAWK ATTACKING WHITE GROUSE

Yuan Dynasty.

Chun-Tang. A brown hawk swoops down on a startled bird whose mate below looks up in alarm. In the branches of an overhanging tree, two finches cheep to one another; rare tiger-lilies in blossom over-grow a small boulder in the foreground. On deep tan silk. *Height, 5 feet 2 inches; width, 2 feet 8½ inches.*

557 LAO TZŪ GIVES AUDIENCE

Yuan Dynasty.

Chun-Tang, by CHOU-CHUNG-MU. The eminent founder of Taoism, keeper of the records at Lo Yang, in after

years deified as "Shou Lao" the God of Longevity. The gray-bearded subject is seated at a table in a balustraded enclosure, before him is evidently his secretary, to the left is a woman who exposes a bloody hand and asks for justice, on the right is a burly man, possibly the husband, and an attendant. On the high table in the rear are various objects of art. A skillful and historic composition, executed on tan silk. *Height, 5 feet 3 inches; width, 2 feet 11 inches.*

558 TWO STORKS

Yuan Dynasty.

Chun-Tang, by WONG-LO-SUEY. Centre is occupied by the two standing birds, their plumage most carefully drawn and displayed; above on the left is a group of bamboo-trees, prunus in blossom and tree-peonies, with two gay-plumed birds nesting in the upper branches. On old tan silk. *Height, 6 feet 10 inches; width, 2 feet 11½ inches.*

559 PORTRAIT OF AN ELDERLY LADY

Sung Dynasty.

Chun-Tang. The wife of an eminent Mandarin. Seated in a lacquer chair, a masterful, vigorous personage, attired in a black robe with embroidered bands, her hands concealed; a dragon and cloudform embroidered girdle-piece, deep rich brocade skirt, a lotus-scroll brocade mantle with crimson background is thrown over the back of chair, a splendid foil to the black robe. High jewelled black and gold cap and two pendant medallion and pearl ear-rings complete the staid dress of the sitter. Executed on tan silk. *Height, 4 feet 6 inches; width, 2 feet 7 inches.*

560 THE SACRED HORSE

Yuan Dynasty.

Cha-I, by WU-TAI. The noble brown quadruped, large of body and lithe of limb, is rubbing his back against the trunk of a gnarled old tree. Rocks and a pool in the foreground. Executed in black and brown on deep tan silk. *Height, 4 feet; width, 1 foot 5 inches.*  
Signed at lower left.

561 BOY WITH PET RAM

Sung Dynasty.

Chun-Tang, by SOU-HAN-CHIN. A pleasant, rolling country with a large pine-tree on the left, at whose foot a chubby young boy leads a gaily caparisoned ram that he has been riding; beyond, two rams, one black and one white, are playfully cavorting across the pasture. Finely drawn with typical coloring of the period, on deep tan silk. *Height, 4 feet; width, 2 feet 8½ inches.*

[*Illustrated.*]

Descriptive seals at midright.

562 RED-CRESTED STORK

Yuan Dynasty.

Cha-I. A stork with its fine plumage stands on its proverbial one leg near the trunk of an old tree. On old tan silk. *Height, 3 feet 10 inches; width, 1 foot 7 inches.*

563 THREE LOHANS

Yuan Dynasty.

Chun-Tang, said to be by WONG-CHIN-PONG, to whose work it bears a most intimate resemblance. On a rocky eminence under a great tree, the three Buddhist figures are closely grouped. One holds a bowl containing magic sprays of peach blossom which he is casting heavenward, many are floating in the air; he is a powerful man, attired in an embroidered blue robe; behind him is an older man, his hand to his eyes, watching the ritualistic performance; before them is a younger man holding a rosary, and clad in white robes magnificently banded and bordered with gold embroidered crimson silk. Executed in tan silk. The color scheme is almost Gothic in its barbaric richness. *Height, 4 feet 9 inches; width, 2 feet 9 inches.*

[*Illustrated.*]

564 THE FAMOUS HORSES OF MU-WANG

Sung Dynasty.

Su-Juen, by CHOU-YUAN-CHUNG. Four horses, black, piebald and dapple-gray, are grouped round a large feeding-trough from which two are eating; an elderly stableman in tall boots is carefully measuring out grain



THREE LOHANS

[ NUMBER 563 ]





while another stirs the feed. At the right is a large drinking-trough at which a chestnut horse is slacking his thirst, a gray horse has just refreshed himself and throws his head in the air with great satisfaction; beyond is a stableman approaching with a heavy wooden bucket of water. These noted beasts are evidently being well treated for they are sleek, fine animals. Executed on tan silk. *Height, 1 foot and  $\frac{3}{4}$  inch; length, 3 feet  $9\frac{1}{2}$  inches.*

565 THE SEVEN WISE MEN OF THE CHOU DYNASTY  
T'ang Dynasty.

SU-JUEN, by WU-TAO-TZŪ. The illustrious seven, in ceremonial attire, are mounted and seen riding through a pleasant grove of trees; they are variously grouped and several are in conversation; many attendants on foot accompany them. An interesting allegory of early China. Remarkable for its delightful composition and fine drawing. Executed on tan silk. *Height, 10 inches; length, 5 feet 9 inches.*

566 THE AMITĀBHA BUDDHA

T'ang Dynasty.

CHA-I. "The Ideal Buddha of boundless age and light" whose paradise is in the Western Heavens. He stands on a cloud formation, attired in voluminous robes of tawny-gray which conceal his hands; around his head which is dressed in blue curls, is a large halo. He wears an elaborate jewelled necklace with pendant and large ear-rings. The features and feet are gilded. Executed in rich deep tan tones on a woven grass-cloth. Probably of Thibetan origin. *Height, 3 feet 4 inches; width, 1 foot 8 inches.*

Imperial seals at top, inscription in ancient characters on right.

567 AN EMINENT MANDARIN GIVING AUDIENCE

Yuan Dynasty.

CHUN-TANG, by CHOU-CHUNG-MU. A pleasant grove of trees in a rocky country, holds a summer-house and a palace beyond; terraces and balustrades define the domain. In the summer-house the mandarin receives many visitors, and others approach with their attendants; other groups of personages are scattered in the

surrounding grounds. Executed in soft luxuriant colors on tan silk. *Height, 5 feet 8 inches; width, 3 feet 6½ inches.*

568 AN EMPRESS AND HER THREE DAUGHTERS

T'ang Dynasty.

Su-Juen. The Empress and her three daughters stand in a group, attired in court costumes of great luxuriance and grace. Captivating in its pleasant harmony of color. On tan silk. *Height, 1 foot 4 inches; length, 1 foot 10 inches.*

Many appreciative seals, and a Ming poem of eulogy are on the left. Ch'ien Lung appreciation and three seals on right.

569 AN EMPEROR'S AUDIENCE TO A FOREIGN

EMBASSY

Yuan Dynasty.

Su-Juen, by CHOU-MÊN-FOO. The illustrious Emperor is seated under an open canopied tent at the left, the ladies of his household around him. Two dignitaries guard the entrance, and beyond the tent are two groups of musicians. Various high officers are stationed at intervals between the tent and a balustrade, beyond which, few may pass to the far-away presence of the dazzling Son of Heaven "T'ien-tsze." At the balustrade is a group of "foreign devils," who can go no further, and approaching from the right is a potentate riding on an elephant. Further court officers guard the outside road. The fine grouping of the figures and the varied costumes of the many personages, give a great air of distinction to this interesting composition. Executed on tan silk. *Height, 10½ inches; length, 7 feet 3 inches.*

Signed at lower left; four ancient seals of appreciation on right and others of more modern times.

570 PANORAMA OF THE YANG-TSE RIVER

Sung Dynasty.

Su-Juen, by CHO-SEN-LI. Rocky mountains on the left seem to make a cradle for the birth-pool of this noble river, near this lake is a bridge carrying numerous horsemen; after passing through a deep gorge, it winds its busy way through varied wooded and high banks on its passage to the ocean. Numerous craft are at anchor, and at the various ports of call, and sailing the



宋陳居  
中楊貴  
妃出浴  
圖

玉體香肌  
沐浴後  
清淨  
玉體  
沐浴後  
清淨  
玉體  
沐浴後  
清淨

水肌玉骨潤於酥  
能說楊妃出浴圖  
恩澤厚游身合  
陪侍恩私  
小  
圖



THE PRINCESS YANG AFTER  
HER BATH

BY CHEN-KU-CHUNG

[ NUMBER 571 ]

river's lordly bosom. Executed in varied greens, browns and dainty grays on tan silk. *Height, 11¾ inches; length, 10 feet 5 inches.*

Signed at lower left.

571 THE PRINCESS YANG, AFTER HER BATH

Sung Dynasty.

Cha-I, by CHEN-KU-CHUNG. The Princess "Yang Kwei-fei" celebrated as the all-powerful favorite of the Emperor "T'ang Huan Tsung" of the T'ang Dynasty, the story of whose tragic end is even to-day frequently recounted in China. The noted beauty is standing with a gauzy crimson robe thrown about her delicate form, two attendants wait on her with unguents to complete her toilet. On deep tan silk. *Height, 2 feet 8½ inches; width, 1 foot 7 inches.*

[*Frontispiece.*]

Many seals of appreciation, and a long laudatory inscription are on this notable and historic composition.

572 PORTRAITS OF A SHOU MANDARIN, HIS SON AND GRANDSON

Sung Dynasty.

Su-Juen. A strong family likeness distinguishes these capable and vigorous men. Evidently excellent portrayals of the subjects. Bust lengths, facing the spectator. On tan paper. *Each portrait: Height, 12¾ inches; width, 9½ inches.*

Four appreciative panels with seals, to left, of the Yuan and Ming Dynasties. To right, an eulogy by a Sung Emperor, his large seal and a charming decorative border all executed in this Emperor's own hand.

573 GROUP OF TAOIST IMMORTALS

Yuan Dynasty.

Chun-Tang. On a rocky coast with the sea swirling beyond, "Shou-lao" the God of Longevity, is seated and pointing the road to "Chang-Kuo" who carries his magic bamboo tube on his back and seems to be riding a black ass; behind them is "Lan-Ts'ai-Ho," her robes blowing in the wind, she carries her ever-present basket of flowers. Growing in the foreground are small peach bushes holding their luscious fruit. *Height, 4 feet 6 inches; width, 2 feet 3½ inches.*

Apocryphal signature of an artist of the T'ang Dynasty, at lower left.

L. MIDDLEDITCH CO., NEW YORK



SMITHSONIAN INSTITUTION LIBRARIES



3 9088 01767 8665